



Woodland Watch 2000 and 2001 Survey of Wheatbelt Woodlands



Western Australian Herbarium

Contents

Introduction	3
Methodology	4
Results	5
Collections of Note	7
Likely New Species	7
DRF and Priority Taxa (confirmed)	8
Significant Range Extensions	9
Conclusion	10
Acknowledgements	11
References	11
Map of Survey Sites	12
Species Lists	13

Introduction

Woodland Watch is a woodlands conservation project launched in 2000 by WWF-Australia, in collaboration with the Herbarium of the Department of Conservation and Land Management, and with the assistance of funding from the Natural Heritage Trust and Alcoa Australia. One of the major objectives of the project was to carry out floristic surveys of selected remnant eucalypt woodlands of the Avon Wheatbelt region – on private farmlands and other lands not within the conservation estate. The Avon Wheatbelt bioregion is situated in the South West Botanical Province of Western Australia, which roughly corresponds to one of WWF's Global 200 priority ecoregions - the Southwest Australia Ecoregion. It is bound by Jarrah forest in the southwest, and the Eremaean Botanical Province –the Murchison and goldfields districts, to the northeast. It encompasses an area of 93,520 square kms, of which 93% has been cleared – predominantly for agriculture (Beard 1990).

Four woodland types considered by WWF-Australia to be amongst the most threatened eucalypt woodland communities of the Avon Wheatbelt region were selected for the research and conservation project: those dominated by salmon gum (*Eucalyptus salmonophloia*), gimlet (*E. salubris*), York gum (*E. loxophleba*) and red morrel (*E. longicornis*).

The primary aims of the project were to identify woodlands of high conservation value in the Avon Wheatbelt, to assist private landowners and rural communities to better manage and conserve these remnant woodlands, and to help landholders to better understand the major threats to these woodlands and their management needs. These include consideration of such impacts as soil compaction, and over-clearing and grazing, which have contributed to the secondary and more important problems of salinity and rising water tables.

Conducting flora surveys in these woodland communities was considered an essential preliminary activity, to highlight their uniqueness and diversity, and to assess and report on their condition. Using this and other information, property owners could then be advised on how best to manage and protect their remnant vegetation through fencing and other management practices, and conservation support schemes such as covenants. Thus, through Woodland Watch, it is possible to address some of the threats to the woodlands, including salinity. Future monitoring of the sites may provide data on the ability and rate at which these eucalypt woodlands can recover from disturbance.

The role of the WA Herbarium in this project was to survey, identify and voucher all plant specimens collected from selected woodland sites. In the first year (2000) it was proposed that 40 sites be surveyed over a two-year period. However, due to the positive response from the farming community it was possible to survey many more sites than was projected. In all, 41 sites were completed in the first year (2000) over a 10-week period. The following year (2001) another 21 sites were surveyed, bringing the total of sites surveyed to 62. Approximately 2400 vouchered specimens were collected.

Methodology

In 2000, the 41 sites were surveyed and plants vouchered by Robert Davis of the WA Herbarium, in collaboration with Richard McLellan of WWF-Australia. In 2001, the 21 sites were surveyed and plants vouchered by Robert Davis and Leigh Sage of the WA Herbarium, in collaboration with Carla Swift and Richard McLellan of WWF-Australia. The survey methodology for each site comprised three components:

Ten by ten metre quadrats

The location of each 10 × 10 metre quadrat was based on the area that best represented the species diversity of the selected woodland type. All species found were collected. Each quadrat was permanently marked by a steel stake on the north-western corner from which the coordinates were recorded using a GPS.

Random stratified collection

This involved a random walk covering the confines of the selected woodland, avoiding adjoining habitats to keep the integrity of survey purely to the targeted Eucalyptus woodland habitat.

Overall assessment

An overall assessment of the condition of each site was made using procedures adopted by the Wildflower Society of Western Australia (Trudgen 1991).

This methodology was considered the most effective to achieve the objectives of the project within the time constraints.

Results

Over a period 2000 - 2001, 62 sites were surveyed, resulting in the collection of approximately 2,400 specimens. Of the 62 woodland sites surveyed, 20 were *Eucalyptus loxophleba*, 20 *Eucalyptus salmonophloia*, 11 *Eucalyptus salubris* and 5 *Eucalyptus longicornis*. The six remaining sites were predominantly of other woodland types: 2 *Eucalyptus wandoo*, 1 *Eucalyptus salicola*, 1 *Eucalyptus capillosa*, and two other mallee woodlands. These selected woodlands varied greatly in size from 20-30 hectares to several hundred hectares; they also varied in condition.

The number of species collected at each site varied considerably. Two sites were found to have the highest number of species of all the sites recorded: Site 6, an *Eucalyptus salmonophloia* woodland ENE of Calingiri, produced 65 voucher specimens. The same number of species was recorded for Site 17, a woodland of predominantly *Eucalyptus capillosa* with some *Eucalyptus salmonophloia*. The smallest collection was within a modified *Eucalyptus longicornis* woodland (Site 58) north of Merredin, at which only 11 specimens were vouchered.

Eucalyptus salmonophloia dominated sites had marginally the highest number of species per site. From the 20 *Eucalyptus salmonophloia* woodland sites surveyed, a total of 816 specimens were vouchered - at an average of 40.8 species per site. The same number of *Eucalyptus loxophleba* woodland sites were surveyed, with 805 specimens vouchered - at an average of 40 species per site.

The least diverse woodland type appeared to be the *Eucalyptus salubris* woodlands. Of the 11 sites surveyed, 347 specimens were collected at an average of 32 species per site. *Eucalyptus longicornis* was the most poorly represented of these woodland types, possibly due to the rarity of this woodland type or simply a matter of circumstances. Only five *Eucalyptus longicornis* woodlands were surveyed with 148 specimens vouchered - at an average of 30 species per site.

Both the distribution and floristic composition of these woodland types within the Avon Wheatbelt region of Western Australia are highly varied. Using databases maintained by the WA Herbarium, it is possible to plot the distribution of these woodland types. However, this will not yield the true distribution of the woodlands, as Herbarium records often reflect merely the presence of a species and thus may not represent a woodland type as such. But it provides a good first-level approximation. Of the many factors affecting the distribution of these woodlands, the most significant appears to be rainfall and soil type.

Eucalyptus loxophleba woodlands are really composed of two woodland types: *Eucalyptus loxophleba* subsp. *loxophleba*, which dominates the western edge of the Wheatbelt running in a southeast / north-westerly direction; and *Eucalyptus loxophleba* subsp. *lissophloia*, which runs in a similar direction but dominates the eastern edge of the Avon Wheatbelt region. The distribution of *Eucalyptus salubris* mirrors that of *Eucalyptus loxophleba* subsp. *lissophloia*. The best-represented woodland is *Eucalyptus salmonophloia*, located throughout much of the Avon Wheatbelt region, with the exception of the northern and southern extremities. *Eucalyptus longicornis* distribution is much like that of *E. salmonophloia* other than being slightly less prevalent in the northern extremities of the Avon Wheatbelt.

The surveys provided an insight into the macro vascular plant associations represented within these four major eucalypt woodland types. The woodlands surveyed showed a certain amount of uniformity in species collected. However, there

were many subtle changes in plant associations from the north to the south of the project area.

The flowering seasons in 2000 and 2001 were considered to be relatively poor due to the lack of winter rains in those years with corresponding early starts to summer. There was no rain recorded after the first week of September 2000 throughout the Wheatbelt region. It is likely that these weather conditions impacted on the number of collections made, as some plants may not have flowered in the study period and many of the herbaceous plants may not have germinated.

However, even after extensive surveying of areas over several flowering seasons there would still be a small percentage of plant species left unrecorded. Despite the season not being ideal, some significant novelties have already been recognised within the collections, and no doubt there will be further findings as the collection is more closely scrutinised.

Woodland Watch has already provided the WA Herbarium with several likely new species and an invaluable window onto the diversity within four of our major Wheatbelt woodlands.



Woodland Watch site 12

[Photo: Richard McLellan/WWF-Australia]

Collections of note

Many collections of interest were made during the 2000 and 2001 Woodland Watch flora surveys. Whilst the majority of these collections provided small range extensions, a number were more significant. Some of these, including a number of possible new species, new locations of Priority taxa, and some of the more notable range extensions, are highlighted below.

Likely New Species

Eight (8) possible new species were collected on Woodland Watch sites during the 2000 and 2001 surveys. All require further study. These were:

- ***Bossiaea sp.*** (WW-38). This has been confirmed as an undescribed species by Dr Jim Ross, Chief Botanist, Royal Botanic Gardens, Melbourne (2002, pers. comm.) Even though unnamed, it is not uncommon.
- ***Bossiaea sp.*** (WW-17). A possible new species.
- ***Austrostipa sp.*** (WW-39). This possible new grass is characterised by its naked florets, found in two separate collections made at this site. This character is found in species belonging to the southeastern Australian subgenus *Tuberculatae* which has never before been recorded in Western Australia. Indeed, this collection closely matches an eastern Australian species, *Austrostipa oligostachya*.
- ***Eremophila sp.*** There were three separate collections of this genus worthy of note, one of which is a possibly undescribed species belonging to the *Eremophila glabra* complex.
- ***Acacia cochlocarpa.*** A specimen thought to be of this species closely matches one gathered from a similar area of the Avon region by the Prussian collector Ludwig Preiss in 1840, represented in the WA Herbarium only by a photograph.
- ***Acacia sp.*** A new species closely related to *A. sclerophylla*.
- ***Dampiera sp.*** An undescribed species found near Brookton.
- ***Lepidosperma sp.*** See notes below concerning *Lepidosperma costale*.

Priority Taxa (confirmed)

Seven (7) new populations of DRF and Priority species were recorded during the 2000 and 2001 surveys:

- ***Austrostipa exilis***. (WW-34). A Priority species (P2) - representing a significant range extension. It has previously never been recorded in the Avon Wheatbelt region.
- ***Acacia recurvata***. (WW-13). Possible new population of a Declared Rare Flora (DRF) species at a disjunct location. The condition of the plant was poor, and this population requires further observation.
- ***Gastrolobium callistachyus***. (WW-29). New population of a Priority Four (P4) species.
- ***Acacia sclerophylla* var. *teretiuscula***. (WW-13). A Priority One (P1) species.
- ***Blennospora phlegmatocarpa***. (WW-05). A Priority Two (P2) species.
- ***Lechenaultia galactites***. New populations of a Priority Three (P3) species.
- ***Goodenia* sp. *Chiddarcooping***. Relocation and collection from the type locality of a species recommended for Priority listing (P1).

Significant Range Extensions, etc.

Five (5) taxa with significant range extensions were recorded:

- ***Hakea nitida***. (Frog Hakea). A significant range extension of approximately 100 kilometres north of known collections.
- ***Abutilon cryptopetalum***. (WW-24). Range extension.
- ***Abutilon oxycarpum***. (WW-14). Range extension
- ***Lepidosperma costale***. Possibly a complex of three species. A detailed study of Type material is needed to confirm which is the true *L costale*.
- ***Maireana marginate***. Proved to be a common species in these woodlands. However, it had been a poorly collected species mainly due to its insignificant appearance. Prior to the Woodland Watch project there had been only 18 collections of this species, this collection has now more than doubled in just two years.

The *Acacia* specimens collected during the first two years of Woodland Watch have also assisted in the refinement of taxonomic data for the electronic key to this genus (Maslin, 2001).



Woodland Watch site 4 [Photo: Richard McLellan/WWF-Australia]

Conclusion

The woodlands surveyed in 2000 and 2001 were found to be largely comprised of species of the following plant families, arranged here in alphabetical order: Asteraceae, Amaranthaceae, Chenopodiaceae, Anthericaceae, Mimosaceae, Papilionaceae and Poaceae.

Although dominated by eucalypts, there are relatively few species of Myrtaceae within these woodlands except for the genus *Melaleuca*. Even though melaleucas were relatively common, they were frequently located either on the periphery of these woodlands or in small pockets within, often near granite or by watercourses and in winter wet depressions. There were four common species of *Melaleuca* found in these woodlands: *Melaleuca adnata*, *M. coronicarpa*, *M. acuminata* and *M. uncinata*.

Proteaceae was also poorly represented in these woodland types. Four species from this family were common. Three, *Hakea recurva*, *H. preissii* and *Grevillea paniculata* were commonly found in association in *Eucalyptus loxophleba* woodlands. *Grevillea huegelii* was commonly found in *Eucalyptus salmonophloia* woodlands.



A magnificent Wheatbelt woodland

[Photo: Richard McLellan/WWF-Australia]

Acknowledgments

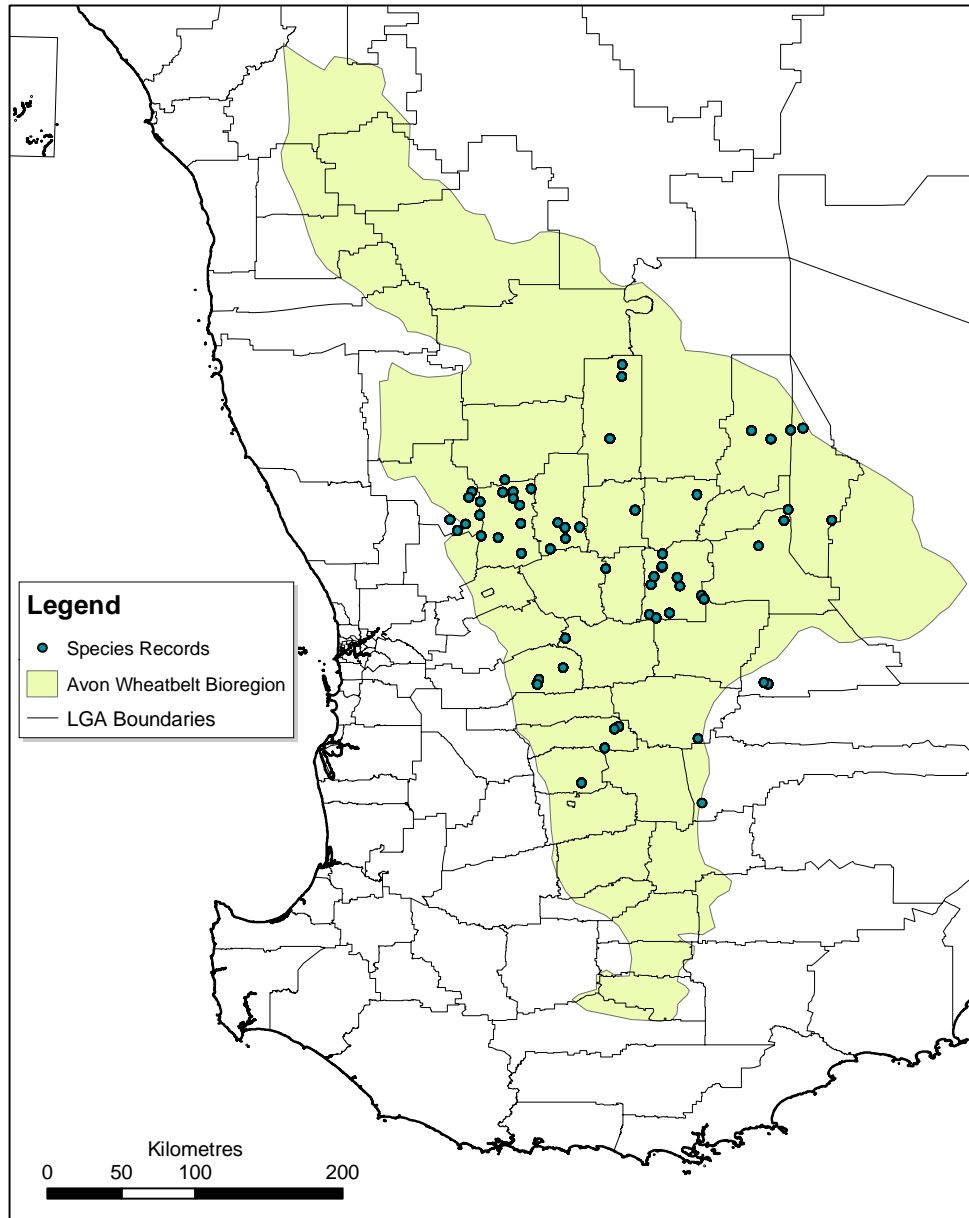
This document was written by Rob Davis and edited by Richard McLellan, Neville Marchant and Nicholas Lander. Document design by Alex Chapman, map preparation and species list by Paul Gioia and the accompanying web site (<http://florabase.calm.wa.gov.au/special/wwatch/>) by Ben Richardson. Images used in this document are courtesy of Richard McLellan/WWF-Australia.

Special thanks are given to Leigh Sage and Carla Swift; to Alex Williams for his expert advice on *Austrostipa*; to Malcolm French for his assistance with the Eucalypts; to Bruce Maslin for his advice on *Acacia*; and to Paul Wilson and Mike Hislop for their invaluable assistance in identification.

References

- Beard, J.S. (1990). *Plant Life of Western Australia*. Kangaroo Press, Kenthurst.
- Maslin, B.R. (2001). WATTLE — *Acacias of Australia* CD-ROM and manual. Australian Biological Resources Study / Dept of Conservation & Land Management, WA.
- Trudgen, M.E. (1991) Vegetation Condition Scale. Modified by B.J. Keighery in Keighery, B.J. (1994) *Bush Land Plant Survey; a Guide to Plant Community Survey for the Community*. Wildflower Society of Western Australia (Inc) Nedlands, W.A 6009.
- Western Australian Herbarium (1998). *FloraBase — Information on the Western Australian flora*. Department of Conservation and Land Management. <http://www.calm.wa.gov.au/science/florabase.html>
- Western Australian Herbarium (2002). *FloraBase — Woodland Watch*. Department of Conservation and Land Management. <http://florabase.calm.wa.gov.au/special/wwatch/>
- WWF-Australia website (2001). *Southwest Australia Ecoregion Program — Woodland Watch* <http://www.wwf.org.au/content/woodlandwatch.htm>

Map of Survey Sites



Site Species Lists

For a current listing of Woodland Watch survey sites, please refer to the Western Australian Herbarium's *FloraBase* - *Woodland Watch* web site at <http://florabase.calm.wa.gov.au/special/wwatch/>

Site Species Lists 2000 (WW-01 to WW-41) and 2001 (WW-42 to WW-62)

Site: WW-01 **No. of Species:** 40

Locality: Burracoppin

Vegetation: *Eucalyptus salmonophloia* woodland.

- 1 *Zygophyllum apiculatum*
- 2 *Austrodanthonia* sp.
- 3 *Senna artemisioides* ssp. *filifolia*
- 4 *Acacia hemiteles*
- 5 *Austrostipa elegantissima*
- 6 *Maireana tricoptera*
- 7 *Austrostipa nitida*
- 8 *Eriochiton sclerolaenoides*
- 9 *Atriplex spongiosa*
- 10 *Enchylaena tomentosa*
- 11 *Ptilotus spathulatus*
- 12 *Maireana marginata*
- 13 *Brassica* sp.
- 14 *Eucalyptus salmonophloia*
- 15 *Leptomeria* sp.
- 16 *Eremophila drummondii*
- 17 *Acacia nyssophylla*
- 18 *Santalum acuminatum*
- 19 *Scaevola spinescens*
- 20 *Acacia enervia* ssp. *enervia*
- 21 *Exocarpos aphyllus*
- 22 *Eucalyptus longicornis*
- 23 *Podolepis capillaris*
- 24 *Eucalyptus* sp. (? *aequioperta*)
- 25 *Eremophila decipiens*
- 26 *Acacia* sp.
- 27 *Senna cardiosperma*
- 28 *Acacia merrallii*
- 29 *Templetonia* sp.
- 30 *Austrostipa platychaeta*
- 31 *Melaleuca* sp.
- 32 *Eucalyptus yilgarnensis*
- 33 *Trifolium* sp.
- 34a *Hyalosperma glutinosum* ssp. *glutinosum*
- 34b *Atriplex semibaccata*
- 35 *Eremophila drummondii*
- 36 *Pittosporum phylliraeoides*
- 37 *Hordeum glaucum**
- 38 *Maireana brevifolia*
- 39 *Avena barbata**
- 40 *Bromus rubens**

Site: WW-02 **No. of Species:** 42

Locality: Burracoppin

Vegetation: *Eucalyptus longicornis* woodland.

- 1 *Rhagodia preissii*
- 2 *Zygophyllum apiculatum*
- 3 *Pittosporum phylliraeoides*
- 4 *Acacia acuminata*
- 5 *Olearia pimelioides* ssp. *pimelioides*
- 6 *Lycium australe*

- 7 *Austrodanthonia caespitosa*
- 8 *Maireana tricoptera*
- 9 *Trachymene cyanopetala*
- 10 *Austrostipa elegantissima*
- 11 *Austrostipa scabra*
- 12 *Sclerolaena diacantha*
- 13 *Eucalyptus longicornis*
- 14 *Melaleuca lanceolata*
- 15 *Eremophila caperata*
- 16 *Sclerolaena drummondii*
- 17 *Ptilotus holosericeus*
- 18 *Podolepis lessonii*
- 19 *Senecio glossanthus*
- 20 *Atriplex bunburyana*
- 21 *Podolepis capillaris*
- 22 *Amphipogon caricinus*
- 23 *Monachather paradoxus*
- 24 *Podolepis canescens*
- 25 *Waitzia acuminata*
- 26 *Gilberta tenuifolia*
- 27 *Pentaschistis airoides**
- 28 *Velleia cyanopotamica*
- 29 *Podotheca gnaphalioides*
- 30 *Hypochaeris glabra**
- 31 *Eucalyptus loxophleba ssp. lissophloia*
- 32 *Austrostipa drummondii*
- 33 *Eremophila ionantha*
- 34 *Zygophyllum sp.*
- 35 *Acacia colletioides*
- 36 *Maireana tricoptera*
- 37 *Senna artemisioides ssp. filifolia*
- 38 *Santalum acuminatum*
- 39 *Santalum spicatum*
- 40 *Rhagodia drummondii*
- 41 *Schismus barbatus*
- 42 *Austrostipa nitida*

Site: WW-03 **No. of Species:** 34

Locality: Koorda

Vegetation: *Eucalyptus salubris* woodland.

- 1 *Melaleuca lateriflora ssp. lateriflora*
- 2 *Ptilotus exaltatus*
- 3 *Maireana carnososa*
- 4 *Eucalyptus sp.*
- 5 *Eucalyptus salubris*
- 6 *Hyalosperma glutinosum ssp. glutinosum*
- 7 *Austrodanthonia caespitosa*
- 8 *Ptilotus holosericeus*
- 9 *Erymophyllum tenellum*
- 10 *Austrostipa variabilis*
- 11 *Enchylaena sp.*
- 12 *Bromus rubens**
- 13 *Angianthus tomentosus*
- 14 *Vulpia sp.**
- 15 *Eucalyptus erythronema ssp. marginata*
- 16 *Acacia erinacea*
- 17 *Waitzia acuminata*
- 18 *Wilsonia humilis*

- 19 *Acacia mackeyana*
- 20 *Melaleuca acuminata*
- 21 *Acacia acuminata*
- 22 *Spergula pentandra*
- 23 *Ptilotus gaudichaudii*
- 24 *Trachymene cyanopetala*
- 25 *Melaleuca coronicarpa*
- 26 *Hordeum glaucum**
- 27 *Ptilotus spathulatus f spathulatus*
- 28 *Dodonaea inaequifolia*
- 29 *Parentucellia latifolia**
- 30 *Erodium botrys**
- 31 *Rhodanthe pygmaea*
- 32 *Isotropis graminifolia*
- 33 *Hypochaeris glabra**
- 34 *Arctotheca calendula**

Site: WW-04 **No. of Species:** 30

Locality: Mollerin

Vegetation: *Eucalyptus longicornis* woodland.

- 1 *Acacia erinacea*
- 2 *Scaevola spinescens*
- 3 *Zygophyllum fruiticulosum*
- 4 *Eucalyptus longicornis*
- 5 *Austrostipa nitida*
- 6 *Zygophyllum sp. (? ovatum)*
- 7 *Senna sp. (? cardiosperma)*
- 8 *Podolepis lessonii*
- 9 *Enchylaena lanata*
- 10 *Atriplex paludosa*
- 11 *Eremophila deserti*
- 12 *Eremophila oldfieldii*
- 13 *Acacia obtecta*
- 14 *Acacia tetragonophylla*
- 15 *Olearia muelleri*
- 16 *Senna cardiosperma*
- 17 *Podolepis canescens*
- 18 *Erymophyllum ramosum*
- 19 *Maireana tricoptera*
- 20 *Maireana erioclada*
- 21 *Eucalyptus salubris*
- 22 *Rhagodia drummondii*
- 23 *Pittosporum phylliraeoides*
- 24 *Ptilotus obovatus*
- 25 *Senna artemisioides ssp. filifolia*
- 26 *Ptilotus exaltatus*
- 27 *Maireana georgei*
- 28 *Acacia colletioides*
- 29 *Austrostipa drummondii*
- 30 *Ptilotus polystachyus*

Site: WW-05 **No. of Species:** 58

Locality: Mollerin

Vegetation: *Eucalyptus salicola* woodland.

- 1 *Austrostipa elegantissima*
- 2 *Acacia* sp.
- 3 *Olearia dampiera* var. *eremicola*
- 4 *Thysanotus manglesianus*
- 5 *Enchylaena tomentosa*
- 6 *Austrostipa* sp.
- 7 *Aristida contorta*
- 8 *Eucalyptus salicola*
- 9 *Comesperma integerrimum*
- 10 *Lomandra effusa*
- 11 *Austrostipa scabra*
- 12 *Eremophila caperata*
- 13 *Rhagodia preissii* ssp. *preissii*
- 14 *Westringia cephalantha*
- 15 *Ptilotus eriotrichus*
- 16 *Melaleuca eleuterostachya*
- 17 *Rhagodia drummondii*
- 18 *Lomandra* sp.
- 19 *Senecio lautus*
- 20 *Hypochaeris glabra*
- 21 *Brassica tournefortii*
- 22 *Pentaschistis airoides*
- 23 *Brachyscome iberidifolia*
- 24 *Levenhookia leptantha*
- 25 *Calotis hispidula*
- 26 *Blennospora phlegmatocarpa* P2
- 27 *Trachymene pilosa*
- 28 *Cryptandra apetala* var. *anomala*
- 29 *Dianella revoluta*
- 30 *Waitzia acuminata*
- 31 *Austrostipa scabra*
- 32 *Podotheca gnaphalioides*
- 33 *Goodenia berardiana*
- 34 *Podolepis canescens*
- 35 *Pittosporum phylliraeoides* var. *microcarpa*
- 36 *Ptilotus obovatus*
- 37 *Atriplex* sp.
- 38 *Olearia muelleri*
- 39 *Sclerolaena diacantha*
- 40 *Ptilotus polystachyus* var. *polystachyus*
- 41 *Ptilotus exaltatus*
- 42 *Alyxia buxifolia*
- 43 *Callitris glaucophylla*
- 44 *Scaevola spinescens*
- 45 *Ursinia anthemoides*
- 46 *Acacia prainii*
- 47 *Exocarpos aphyllus*
- 48 *Alyogyne pinoniana*
- 49 *Solanum nummularium*
- 50 *Hakea minyma*
- 51 *Acacia jennerea*
- 52 *Maireana georgei*
- 53 *Monachather paradoxus*
- 54 *Lepidobolus preissianus*
- 55 *Stenopetalum filifolium*
- 56 *Bromus rubens*
- 57 *Austrodanthonia caespitosa*
- 58 *Podolepis capillaris*

Site: WW-06

No. of Species: 66

Locality: Calingiri

Vegetation: *Eucalyptus salmonophloia* woodland.

- 01 *Acacia erinacea*
- 02 *Acacia bidentata*
- 03 *Dodonaea bursariifolia*
- 04 *Acacia microbotrya*
- 05 *Olearia rudis*
- 06 *Lomandra effusa*
- 07 *Lepidosperma* sp.
- 08 *Austrostipa elegantissima*
- 09 *Lagenophora huegelii*
- 10 *Waitzia nitida*
- 11 *Eremophyllum tenellum*
- 12 *Rhodanthe polycephala*
- 13 *Trachymene cyanopetala*
- 14 *Daucus glochidiatus*
- 15 *Sollya heterophylla*
- 16 *Orthrosanthus laxus* var. *laxus*
- 17 *Comesperma integerrimum*
- 18 *Eucalyptus salmonophloia*
- 19 *Bromus rubens**
- 20 *Aira cupaniana**
- 21 *Sonchus oleraceus**
- 22 *Trachymene ornata*
- 23 *Stylidium cilium*
- 24 *Acacia acuminata*
- 25 *Isopogon divergens*
- 26 *Hakea preissii*
- 27 *Stylobasium australe*
- 28 *Acacia aestivalis*
- 29 *Olearia dampieri* var. *eremicola*
- 30 *Trymalium daphnifolium*
- 31 *Desmocladius aspera*
- 32 *Drosera* sp.
- 33 *Allocasuarina humilis*
- 34 *Comesperma volubile*
- 35 *Melaleuca coroncarpa*
- 36 *Marianthus bicolor*
- 37 *Templetonia* sp. (?*sulcata*)
- 38 *Eremophila lehmanniana*
- 39 *Ptilotus drummondii*
- 40 *Eucalyptus wandoo*
- 41 *Santalum acuminatum*
- 42 *Dodonaea divaricata*
- 43 *Exocarpos aphyllus*
- 44 *Dampiera lavandulacea*
- 45 *Goodenia convexa*
- 46 *Wahlenbergia gracilentia*
- 47 *Parentucella latifolia*
- 48 *Bossiaea spinescens*
- 49 *Neurachne alopecuroidea*
- 50 *Rhodanthe polycephala*
- 51 *Scaevola spinescens*
- 52 *Hakea commutata*
- 53 *Austrostipa trichophylla*
- 54 *Arctotheca calendula**
- 55 *Anagallis arvenensis**
- 56 *Hakea lissocarpha*

- 57 *Podolepis capillaris*
- 58 *Dianella revoluta*
- 59 *Vulpia myuros**
- 60 *Austrostipa trichophylla*
- 61 *Helichrysum leucopsidium*
- 62 *Nemcia* sp.
- 63 *Burchardia umbellata*
- 64 *Stypandra glauca*
- 65 *Cheilanthes seiberi* ssp. *seiberi*
- 66 *Hypochaeris glabra**

Site: WW-07 **No. of Species:** 65

Locality: Calingiri

Vegetation: *Eucalyptus salmonophloia* woodland.

- 1 *Eucalyptus salmonophloia*
- 2 *Acacia erinacea*
- 3 *Rhagodia preissii*
- 4 *Lepidium rotundum*
- 5 *Ptilotus divaricatus*
- 6 *Atriplex semibaccata*
- 7 *Sclerolaena diacantha*
- 8 *Enchylaena lanata*
- 9 *Trachymene cyanopetala*
- 10 *Austrostipa elegantissima*
- 11 *Ehrharta longiflora**
- 12 *Daucus glochidiatus*
- 13 *Crassula colorata*
- 14 *Trachymene ornata*
- 15 *Dodonaea bursariifolia*
- 16 *Olearia dampieri* var *eremicola*
- 17 *Rhodanthe polycephala*
- 18 *Podolepis lessonii*
- 19 *Ptilotus holosericeus*
- 20 *Scaevola spinescens*
- 21 *Templetonia* sp.
- 22 *Eremophila lehmanniana*
- 23 *Daviesia benthamii* ssp. *benthamii*
- 24 *Acacia aestivalis*
- 25 *Melaleuca adnata*
- 26 *Hakea lissocarpha*
- 27 *Stylobasium australe*
- 28 *Acacia bidentata*
- 29 *Neurachne alopecuroidea*
- 30 *Bromus rubens**
- 31 *Desmocladius asper*
- 32 *Hyalosperma glutinosum* ssp. *glutinosum*
- 33 *Lomandra effusa*
- 34 *Arthropodium dyeri*
- 35 *Pentaschistis airoides**
- 36 *Eucalyptus loxophleba*
- 37 *Austrostipa elegantissima*
- 38 *Dampiera lavandulacea*
- 39 *Westringia rigida*
- 40 *Conostylis prolifera*
- 41 *Acacia acuminata*
- 42 *Lepidosperma* sp.
- 43 *Wilsonia humilis*
- 44 *Aristida contorta*

- 45 *Ptilotus polystachyus* var. *polystachyus*
- 46 *Orthrosanthus laxus* var. *laxus*
- 47 *Hakea preissii*
- 48 *Lepidosperma* sp.
- 49 *Allocasuarina humilis*
- 50 *Senna artemisioides* ssp. *filifolia*
- 51 *Santalum acuminatum*
- 52 *Pittosporum phylliraeoides*
- 53 *Stypandra glauca*
- 54 *Austrostipa trichophylla*
- 55 *Waitzia acuminata*
- 56 *Opercularia vaginata*
- 57 *Solanum nigrum**
- 58 *Dianella revoluta*
- 59 *Ursinia anthemoides**
- 60 *Eucalyptus wandoo*
- 61 *Anagallis arvensis* var. *caerulea**
- 62 *Podolepis canescens*
- 63 *Lepidobolus* sp.
- 64 *Sowerbaea laxiflora*
- 65 *Brachyscome iberidifolia*

Site: WW-08

No. of Species: 51

Locality: Wyening

Vegetation: *Eucalyptus longicornis* / *salmonophloia* woodland.

- 1 *Acacia erinacea*
- 2 *Daviesia benthamii* ssp. *benthamii*
- 3 *Austrodanthonia caespitosa*
- 4 *Lomandra effusa*
- 5 *Erymophyllum tenellum*
- 6 *Lepidium rotundum*
- 7 *Eucalyptus loxophleba*
- 8 *Rhodanthe polycephala*
- 9 *Pittosporum phylliraeoides*
- 10 *Calandrinia* sp.
- 11 *Austrostipa elegantissima*
- 12 *Daucus glochidiatus*
- 13 *Ehrharta longiflora**
- 14 *Briza maxima**
- 15 *Trachymene cyanopetala*
- 16 *Acacia bidentata*
- 17 *Bromus rubens**
- 18 *Eucalyptus salmonophloia*
- 19 *Avena barbata**
- 20 *Lepidosperma brunonianum*
- 21 *Sollya heterophylla*
- 22 *Nemcia hookeri*
- 23 *Vulpia myuros**
- 24 *Ursinia anthemoides**
- 25 *Anagallis arvensis* var. *caerulea**
- 26 *Comesperma volubile*
- 27 *Stylobasium australe*
- 28 *Acacia lasiocarpa*
- 29 *Lolium rigidum**
- 30 *Templetonia* sp.
- 31 *Hakea preissii*
- 32 *Austrostipa trichophylla*
- 33 *Rhagodia preissii*

- 34 *Sonchus oleraceus**
- 35 *Acacia* sp. (? *brumalis*)
- 36 *Rhodanthe manglesii*
- 37 *Dianella revoluta*
- 38 *Hordeum glaucum**
- 39 *Comesperma integerrimum*
- 40 *Orthrosanthus laxus* var. *laxus*
- 41 *Eucalyptus* sp.
- 42 *Acacia acuminata*
- 43 *Allocasuarina humilis*
- 44 *Stypandra glauca*
- 45 *Burchardia umbellata*
- 46 *Caesia micrantha*
- 47 *Neurachne alopecuroidea*
- 48 *Haloragis* sp.
- 49 *Dampiera lavandulacea*
- 50 *Arctotheca calendula*
- 51 *Goodenia berardiana*

Site: WW-09

No. of Species: 47

Locality: Bolgart

Vegetation: *Eucalyptus loxophleba* woodland.

- 1 *Hakea preissii*
- 2 *Acacia acuminata*
- 3 *Eucalyptus loxophleba*
- 4 *Thysanotus patersonii*
- 5 *Briza maxima**
- 6 *Trachymene cyanopetala*
- 7 *Podolepis lessonii*
- 8 *Briza minor**
- 9 *Gonocarpus nodulosus*
- 10 *Hydrocotyle pilifera* var. *glabrata*
- 11 *Parentucellia latifolia**
- 12 *Romula rosea**
- 13 *Hypochaeris glabra**
- 14 *Ehrharta longiflora**
- 15 *Lolium rigidum**
- 16 *Anagallis arvensis* var. *caerulea**
- 17 *Conostylis prolifera*
- 18 *Phyllangium* sp.
- 19 *Blennospora drummondii*
- 20 *Erodium cygnorum* ssp. *cygnorum*
- 21 *Galium murale**
- 22 *Bulbine semibarbata*
- 23 *Sowerbaea laxiflora*
- 24 *Ursinia anthemoides**
- 25 *Neurachne alopecuroidea*
- 26 *Austrostipa trichophylla*
- 27 *Avena barbata**
- 28 *Casuarina obesa*
- 29 *Acacia microbotrya*
- 30 *Arctotheca calendula**
- 31 *Austrodanthonia caespitosa*
- 32 *Sonchus oleraceus**
- 33 *Waitzia nitida*
- 34 *Comesperma integerrimum*
- 35 *Dichopogon* sp.
- 36 *Aira cupaniana**

- 37 *Cotula cotuloides*
- 38 *Trifolium campestre* var. *campestre**
- 39 *Triglochin* sp.A
- 40 *Triglochin nanum*
- 41 *Hyalosperma demissum*
- 42 *Actinobole uliginosum*
- 43 *Plantago coronopus**
- 44 *Enchylaena lanata*
- 45 *Austrostipa elegantissima*
- 46 *Halosarcia pergranulata*
- 47 *Atriplex semibaccata*

Site: WW-10 **No. of Species:** 60

Locality: Goomalling

Vegetation: *Eucalyptus salmonophloia* woodland.

- 1 *Eremophila decipiens*
- 2 *Eucalyptus salmonophloia*
- 3 *Lepidosperma* sp.
- 4 *Acacia bidentata*
- 5 *Exocarpos aphyllus*
- 6 *Podolepis capillaris*
- 7 *Austrostipa elegantissima*
- 8 *Templetonia* sp.
- 9 *Dodonaea bursariifolia*
- 10 *Atriplex semibaccata*
- 11 *Austrostipa variabilis*
- 12 *Austrodanthonia caespitosa*
- 13 *Vulpia myuros**
- 14 *Bromus rubens**
- 15 *Ehrharta longiflora**
- 16 *Ptilotus holosericeus*
- 17 *Lolium rigidum**
- 18 *Acacia erinacea*
- 19 *Comesperma integerrimum*
- 20 *Enchylaena lanata*
- 21 *Lepidium rotundum*
- 22 *Pentaschistis airoides**
- 23 *Daviesia benthamii* ssp. *benthamii*
- 24 *Nemcia obovata*
- 25 *Daucus glochidiatus*
- 26 *Hyalosperma glutinosum* ssp. *glutinosum*
- 27 *Podolepis lessonii*
- 28 *Rhodanthe manglesii*
- 29 *Lomandra effusa*
- 30 *Dampiera lavandulacea*
- 31 *Olearia dampieri* var. *eremicola*
- 32 *Eucalyptus loxophleba*
- 34 *Cryptandra* sp.
- 35 *Grevillea huegelii*
- 36 *Dichopogon* sp.
- 37 *Eremophila lehmanniana*
- 38 *Arctotheca calendula**
- 39 *Waitzia nitida*
- 40 *Cotula* sp. (? *australis*)
- 41 *Scaevola spinescens*
- 42 *Neurachne alopecuroidea*
- 43 *Hordeum glaucum**
- 44 *Pogonolepis muelleriana*

- 45 *Romula rosea**
- 46 *Cotula hispidula*
- 47 *Actinobole uliginosum*
- 48 *Acacia acuminata*
- 49 *Hakea preissii*
- 50 *Trachymene ornata*
- 51 *Desmocladius asper*
- 52 *Lepidosperma tenue*
- 53 *Lepidosperma sp.*
- 55 *Acacia lasiocarpa* var. *sedifolia*
- 56 *Lepidosperma sp.*
- 57 *Ptilotus polystachyus*
- 58 *Maireana brevifolia*
- 59 *Erymophyllum tenellum*
- 60 *Austrostipa scabra*

Site: WW-11 **No. of Species:** 51

Locality: Goomalling

Vegetation: *Eucalyptus salmonophloia* woodland.

- 1 *Eucalyptus salmonophloia*
- 2 *Acacia erinacea*
- 3 *Austrostipa pycnostachya*
- 4 *Austrostipa elegantissima*
- 5 *Atriplex semibaccata*
- 6 *Lepidium rotundum*
- 7 *Crassula colorata*
- 8 *Maireana enchylaenoides*
- 9 *Bromus rubens**
- 10 *Pentaschistis airoides**
- 11 *Spergularia diandra*
- 12 *Templetonia sp.*
- 13 *Calandrinia sp.*
- 14 *Calotis hispidula*
- 15 *Austrodanthonia caespitosa*
- 16 *Eucalyptus loxophleba*
- 17 *Ehrharta longiflora**
- 18 *Sonchus oleraceus**
- 19 *Acacia bidentata*
- 20 *Maireana marginata*
- 21 *Hypochaeris glabra**
- 22 *Arctotheca calendula**
- 23 *Maireana brevifolia*
- 24 *Neurachne alopecuroidea*
- 25 *Lepidosperma sp.*
- 26 *Bossiaea spinescens*
- 27 *Avena barbata**
- 28 *Ptilotus divaricatus*
- 29 *Arthropodium dyeri*
- 30 *Lomandra effusa*
- 31 *Ptilotus spathulatus* f *spathulatus*
- 32 *Cotula bipinnata*
- 33 *Lolium rigidum**
- 34 *Ptilotus holosericeus*
- 35 *Ptilotus humilis*
- 36 *Austrostipa variabilis*
- 37 *Trachymene ornata*
- 38 *Trachymene cyanopetala*
- 39 *Trifolium sp.*

- 40 *Actinobole uliginosum*
- 41 *Ursinia anthemoides**
- 42 *Ptilotus polystachyus*
- 43 *Daviesia nematophylla*
- 44 *Melaleuca uncinata*
- 45 *Hakea preissii*
- 46 *Brassica tournefortii*
- 47 *Thysanotus dichotomus*
- 48 *Podotheca gnaphalioides*
- 49 *Dianella revoluta*
- 50 *Echium plantagineum**
- 51 *Solanum nigrum**

Site: WW-12

No. of Species: 32

Locality: Doodlakine

Vegetation: *Eucalyptus salubris* woodland.

- 1 *Eucalyptus salubris*
- 2 *Santalum acuminatum*
- 3 *Olearia muelleri*
- 4 *Acacia merrallii*
- 5 *Enchylaena lanata*
- 6 *Melaleuca acuminata*
- 7 *Dodonaea stenozyga*
- 8 *Templetonia sp.*
- 9 *Trymalium daphnifolium*
- 10 *Eucalyptus calycogona ssp. calycogona*
- 11 *Lepidium rotundum*
- 12 *Wilsonia humilis*
- 13 *Zygophyllum apiculatum*
- 14 *Acacia erinacea*
- 15 *Ptilotus holosericeus*
- 16 *Eremophila oppositifolia*
- 17 *Eucalyptus capillosa*
- 18 *Chenopodium desertorum ssp. microphyllum*
- 19 *Sclerolaena diacantha*
- 20 *Melaleuca eleuterostachya*
- 21 *Asteridea athrixoides*
- 22 *Acacia acuminata*
- 23 *Acacia acuaria*
- 24 *Atriplex paludosa*
- 25 *Senna artemisioides ssp. filifolia*
- 26 *Trymalium daphnifolium*
- 27 *Austrostipa trichophylla*
- 28 *Maireana trichoptera*
- 29 *Thysanotus patersonii*
- 30 *Centaurea melitensis**
- 31 *Austrostipa elegantissima*
- 32 *Eucalyptus salmonophloia*

Site: WW-13

No. of Species: 19

Locality: Doodlakine

Vegetation: *Eucalyptus salmonophloia/salubris/capillosa* woodland.

- 1 *Eucalyptus celastroides*
- 2 *Acacia sclerophylla var. teretiuscula* P1
- 3 *Acacia erinacea*
- 4 *Atriplex bunburyana*

- 5 *Enchylaena lanata*
- 6 *Daviesia nematophylla*
- 7 *Eucalyptus sheathiana*
- 8 *Olearia muelleri*
- 9 *Melaleuca eleuterostachya*
- 10 *Melaleuca uncinata*
- 11 *Atriplex codonocarpa*
- 12 *Ptilotus holosericeus*
- 13 *Maireana carnos*
- 14 *Acacia* sp. (? *recurvata* DRF - if not likely to be undescribed species)
- 15 *Dianella revoluta*
- 16 *Austrostipa elegantissima*
- 17 *Austrostipa* sp.
- 18 *Waitzia acuminata*
- 19 *Spartochloa scirpoidea*

Site: WW-14

No. of Species: 45

Locality: Doodlakine

Vegetation: *Eucalyptus loxophleba/salubris* woodland.

- 1 *Eucalyptus loxophleba*
- 2 *Senna artemisioides* ssp. *filifolia*
- 3 *Acacia acuaria*
- 4 *Acacia hemiteles*
- 5 *Waitzia nitida*
- 6 *Enchylaena tomentosa*
- 7 *Podolepis capillaris*
- 8 *Austrostipa variabilis*
- 9 *Vittadinia* sp.
- 10 *Aristida contorta*
- 11 *Avena barbata**
- 12 *Austrodanthonia caespitosa*
- 13 *Atriplex bunburyana*
- 14 *Acacia acuminata*
- 15 *Acacia erinacea*
- 16 *Hakea recurva*
- 17 *Eriochiton sclerolaenoides*
- 18 *Dodonaea inaequifolia*
- 19 *Stylobasium australe*
- 20 *Maireana georgei*
- 21 *Austrostipa elegantissima*
- 22 *Ptilotus holosericeus*
- 23 *Pittosporum phylliraeoides*
- 24 *Atriplex codonocarpa*
- 25 *Hakea preissii*
- 26 *Santalum acuminatum*
- 27 *Ptilotus polystachyus*
- 28 *Maireana brevifolia*
- 29 *Atriplex semibaccata*
- 30 *Abutilon ooxycarpum*
- 31 *Alyogyne hakeifolia*
- 32 *Dianella revoluta*
- 33 *Ptilotus spathulatus*
- 34 *Lomandra effusa*
- 35 *Neurachne alopecuroidea*
- 36 *Echium plantagineum**
- 37 *Eucalyptus* sp. (? *salubris*)
- 38 *Monachather paradoxus*
- 39 *Dampiera lavandulacea*

- 40 *Dampiera lavandulacea*
 41 *Acacia* sp.
 42 *Brunonia australis*
 43 *Podolepis canescens*
 44 *Podotheca gnaphalioides*
 45 *Pultenaea neurocalyx*

Site: WW-15

No. of Species: 47

Locality: Kellerberrin

Vegetation: *Eucalyptus myriadena* ssp *myriadena*/ *Eucalyptus loxophleba* ssp *supralaevis* woodland.

- 1 *Eucalyptus myriadena* ssp. *myriadena*
 2 *Exocarpos aphyllus*
 3 *Lycium australe*
 4 *Atriplex bunburyana*
 5 *Atriplex* sp. (?*paludosa* ssp. *baudinii*)
 6 *Podolepis capillaris*
 7 *Pittosporum phylliraeoides* var. *microcarpa*
 8 *Angianthus tomentosus*
 9 *Ptilotus gaudichaudii*
 10 *Sclerolaena diacantha*
 11a *Teucrium sessiliflorum*
 11b **Erodium botrys*
 12 *Rhagodia drummondii*
 13 *Disphyma crassifolium*
 14 *Templetonia smithiana*
 15 *Waitzia acuminata* ssp. *acuminata*
 16 *Dianella revoluta* var. *divaricata*
 17 **Centaurea melitensis*
 18 *Olearia dampieri* var. *eremicola*
 19 **Mesembryanthemum nodiflorum*
 20 *Stackhousia muricata*
 21 *Gnephosis tenuissima*
 22 *Monachather paradoxus*
 23 *Acacia colletioides*
 24 *Hakea preissii*
 25 *Eremophila decipiens*
 26 *Ptilotus polystachyus* var. *polystachyus*
 27 *Austrostipa trichophylla*
 28 *Santalum acuminatum*
 29 *Enchylaena tomentosa*
 30 *Maireana carnosae*
 31 *Lepidium rotundum*
 32 *Pogonolepis muelleriana*
 33 *Austrostipa scabra*
 34 *Eremophila deserti*
 35 *Thysanotus manglesianus*
 36 *Austrostipa elegantissima*
 37 *Cassutha melantha*
 38 *Maireana trichoptera*
 39 *Lomandra effusa*
 40 *Maireana georgei*
 41 *Eucalyptus* sp. (?*salmonophloia*)
 42 *Acacia acuminata*
 43 *Olearia muelleri*
 44 *Melaleuca lateriflora* ssp. *lateriflora*
 45 *Melaleuca uncinata*
 46 *Schoenia filifolia* ssp. *filifolia*

47 *Eucalyptus loxophleba* ssp. *supralaevis*

Site: WW-16

No. of Species: 34

Locality: Kellerberrin

Vegetation: *Eucalyptus salmonophloia/salubris* woodland.

- 1 *Eucalyptus salubris*
- 2 *Eucalyptus myriadena*
- 3 *Enchylaena tomentosa*
- 4 *Sclerolaena diacantha*
- 5 *Maireana carnos*
- 6 *Austrodanthonia setacea*
- 7 *Maireana marginata*
- 8 *Podolepis capillaris*
- 9 *Eucalyptus obtusiflora*
- 10 *Eucalyptus erythronema* ssp. *erythronema*
- 11 *Acacia acuminata*
- 12 *Waitzia acuminata*
- 13 *Templetonia* sp.
- 14 *Ptilotus holosericeus*
- 15 *Hakea recurva*
- 16 *Wilsonia humilis*
- 17 *Olearia muelleri*
- 18 *Acacia merrallii*
- 19 *Maireana brevifolia*
- 20 *Atriplex semibaccata*
- 21 *Melaleuca eleuterostachya*
- 22 *Austrostipa elegantissima*
- 23 *Austrostipa eremophila*
- 24 *Disphyma crassifolium*
- 25 *Mesembryanthemum nodiflorum*
- 26 *Angianthus tomentosus*
- 27 *Zygophyllum* sp. ? *ovatum*
- 28 *Santalum acuminatum*
- 29 *Acacia erinacea*
- 30 *Eucalyptus salmonophloia*
- 31 *Atriplex* sp. ? *bunburyana*
- 32 *Acacia saxatilis*
- 33 *Mesembryanthemum crystallinum*
- 34 *Centaurea melitensis*

Site: WW-17

No. of Species: 65

Locality: Kellerberrin

Vegetation: *Eucalyptus salmonophloia/Eucalyptus capillosa* woodland

- 1 *Eucalyptus capillosa*
- 2 *Eucalyptus salmonophloia*
- 3 *Gastrolobium parviflorum*
- 4 *Acacia acuar*
- 5 *Olearia dampiera* var. *eremicola*
- 6 *Bossiaea eriocarpa*
- 7 *Hakea lissocarpha*
- 8 *Lomandra effusa*
- 9 *Desmocladius asper*
- 10 *Austrostipa trichophylla*
- 11 *Waitzia acuminata*
- 12 *Podolepis capillaris*
- 13 *Lawrencella rosea*

- 14 *Neurachne alopecuroidea*
- 15 *Thelymitra* sp.
- 16 *Lepidosperma* sp. A2 Island Flat
- 17 *Westringia rigida*
- 18 *Grevillea huegelii*
- 19 *Acacia hemiteles*
- 20 *Santalum acuminatum*
- 21 *Dodonaea bursariifolia*
- 22 *Melaleuca coronicarpa*
- 23 *Acacia erinacea*
- 24 *Grevillea petrophiloides*
- 25 *Grevillea* sp.
- 26 *Astroloma serratifolium*
- 27 *Dianella revoluta* var. *divaricata*
- 28 *Bossiaea* sp.
- 29 *Grevillea paniculata*
- 30 *Allocasuarina campestris*
- 31 *Melaleuca platycaylx*
- 32 *Xanthorrhoea nana*
- 33 *Austrodanthonia caespitosa*
- 34 *Monachather paradoxus*
- 35 *Opercularia spermacocea*
- 36 *Lepidobolus* sp.
- 37 *Mesomelaena stygia* ssp. *stygia*
- 38 *Austrostipa elegantissima*
- 39 *Comesperma scoparium*
- 40 *Comesperma integerrimum*
- 41 *Lepidosperma tenue*
- 42 *Patersonia drummondii* ssp. *drummondii*
- 43 *Trymalium* sp.
- 44 *Daviesia benthamii* ssp. *benthamii*
- 45 *Dichopogon fimbriatus*
- 46 *Acacia verricula*
- 47 *Melaleuca uncinata*
- 48 *Templetonia* sp. (?*sulcata*)
- 49 *Eucalyptus sheathiana*
- 50 *Eucalyptus eremophila* ssp. *eremophila*
- 51 *Leptospermum erubescens*
- 52 *Melaleuca ctenoides*
- 53 *Lasiopetalum molle* ssp. *molle*
- 54 *Thysanotus manglesianus*
- 55 *Diplolaena velutina*
- 56 *Platysace maxwellii*
- 57 *Eucalyptus loxophleba*
- 58 *Eucalyptus erythronema* ssp. *erythronema*
- 59 *Olearia muelleri*
- 60 **Ehrharta longiflora*
- 61 **Ursinia anthemoides*
- 62 **Pentaschistis airoides*
- 63 *Eucalyptus transcontinentalis*
- 64 *Lomandra collina*
- 65 *Lepidosperma* aff. *costale*

Site: WW-18

No. of Species: 45

Locality: Kellerberrin

Vegetation: *Eucalyptus loxophleba* woodland.

- 1 *Eucalyptus loxophleba*
- 2 *Hakea recurva*

- 3 *Acacia acuaria*
- 4 *Acacia acuminata*
- 5 *Austrodanthonia caespitosa*
- 6 *Austrostipa flavescens*
- 7 *Lomandra effusa*
- 8 *Ptilotus spathulatus f spathulatus*
- 9 *Neurachne alopecuroidea*
- 10 *Podolepis capillaris*
- 11 *Waitzia nitida*
- 12 *Hyalosperma glutinosum ssp. glutinosum*
- 13 *Rhodanthe manglesii*
- 14 *Vittadinia sp.*
- 15 *Echium plantagineum**
- 16 *Brunonia australis*
- 17 *Avena barbata**
- 18 *Amphipogon caricinus*
- 19 *Dampiera lavandulacea*
- 20 *Lepidosperma sp.*
- 21 *Aristida contorta*
- 22 *Ursinia anthemoides**
- 23 *Briza maxima**
- 24 *Podolepis canescens*
- 25 *Ptilotus polystachyus*
- 26 *Juncus radula*
- 27 *Bromus rubens**
- 28 *Austrostipa elegantissima*
- 29 *Isotropis juncea*
- 30 *Gilberta tenuifolia*
- 31 *Ptilotus gaudichaudii*
- 32 *Ehrharta longiflora**
- 33 *Grevillea paniculata*
- 34 *Dichopogon capillipes*
- 35 *Goodenia occidentalis*
- 36 *Petrorhagia velutina*
- 37 *Dianella revoluta*
- 38 *Acacia microbotrya*
- 39 *Thysanotus sp.*
- 40 *Sida calyxhymenia*
- 41 *Trachymene ornata*
- 42 *Acacia erinacea*
- 43 *Enchylaena lanata*
- 44 *Daviesia benthamii ssp. benthamii*
- 45 *Lepidium rotundum*

Site: WW-19

No. of Species: 26

Locality: Kellerberrin

Vegetation: *Eucalyptus salmonophloia/salubris* woodland.

- 1 *Eucalyptus salubris*
- 2 *Eucalyptus salmonophloia*
- 3 *Eucalyptus celastroides ssp. virella*
- 4 *Eucalyptus sheathiana*
- 5 *Acacia erinacea*
- 6 *Olearia muelleri*
- 7 *Sclerolaena diacantha*
- 8 *Enchylaena tomentosa*
- 9 *Rhagodia preissii*
- 10 *Melaleuca coroncarpa*
- 11 *Austrostipa elegantissima*

- 12 *Acacia ligustrina*
- 13 *Lepidium rotundum*
- 14 *Acacia hemiteles*
- 15 *Daviesia articulata*
- 16 *Santalum acuminatum*
- 17 *Dodonaea bursariifolia*
- 18 *Melaleuca uncinata*
- 19 *Templetonia* sp. (?sulcata)
- 20 *Grevillea huegelii*
- 21 *Eucalyptus erythronema* var. *erythronema*
- 22 *Olearia dampieri* var. *eremicola*
- 23 *Lomandra effusa*
- 24 *Melaleuca lateriflora* ssp. *lateriflora*
- 25 *Lolium rigidum**
- 26 *Ehrharta longiflora**

Site: WW-20

No. of Species: 46

Locality: Kellerberrin

Vegetation: *Eucalyptus capillosa/loxophleba/salmonophloia* woodland.

- 1 *Eucalyptus salmonophloia*
- 2 *Eucalyptus loxophleba*
- 3 *Acacia acuaria*
- 4 *Acacia erinacea*
- 5 *Enchylaena tomentosa*
- 6 *Austrostipa elegantissima*
- 7 *Austrodanthonia caespitosa*
- 8 *Austrostipa scabra*
- 9 *Dodonaea* sp. (? bursariifolia)
- 10 *Ursinia anthemoides**
- 11 *Ehrharta longiflora**
- 12 *Gahnia* sp.
- 13 *Waitzia acuminata*
- 14 *Lolium rigidum**
- 15 *Daviesia benthamii* ssp. *benthamii*
- 16 *Olearia dampieri* var. *eremicola*
- 17 *Santalum spicatum*
- 18 *Wilsonia humilis*
- 19 *Acacia acuminata*
- 20 *Podolepis capillaris*
- 21 *Templetonia* sp. (?sulcata)
- 22 *Hakea recurva*
- 23 *Lomandra effusa*
- 24 *Desmocladius asper*
- 25 *Neurachne alopecuroidea*
- 26 *Opercularia spermacocea*
- 27 *Aristida contorta*
- 28 *Dampiera lavandulacea*
- 29 *Daviesia pachyloma*
- 30 *Eucalyptus obtusiflora*
- 31 *Ptilotus drummondii*
- 32 *Santalum acuminatum*
- 33 *Lepidium rotundum*
- 34 *Lepidosperma* sp.
- 35 *Dianella revoluta*
- 36 *Brunonia australis*
- 37 *Eucalyptus wandoo* ssp. *wandoo*
- 38 *Glischrocaryon aureum*
- 39 *Eremophila lehmanniana*

- 40 *Eremophila glabra*
- 41 *Briza maxima**
- 42 *Hakea lissocarpha*
- 43 *Acacia microbotrya*
- 44 *Stenanthemum* sp.
- 45 *Gastrolobium parviflorum*
- 46 *Senna artemisioides* ssp. *filifolia*

Site: WW-21 **No. of Species:** 43

Locality: Tammin

Vegetation: *Eucalyptus loxophleba* woodland.

- 1 *Eucalyptus loxophleba*
- 2 *Acacia acuminata*
- 3 *Grevillea paniculata*
- 4 *Dianella revoluta*
- 5 *Ptilotus drummondii*
- 6 *Austrostipa elegantissima*
- 7 *Neurachne alopecuroidea*
- 8 *Aristida contorta*
- 9 *Austrostipa tenuifolia*
- 10 *Waitzia acuminata*
- 11 *Ptilotus spathulatus* f *spathulatus*
- 12 *Schoenia cassiniana*
- 13 *Brunonia australis*
- 14 *Ptilotus gaudichaudii*
- 15 *Ptilotus polystachyus* var. *polystachyus*
- 16 *Stackhousia monogyna*
- 17 *Lupinus cosentinii**
- 18 *Lepidosperma costale*
- 19 *Opercularia vaginata*
- 20 *Allocasuarina huegeliana*
- 21 *Sida calyxhymenia*
- 22 *Comesperma integerrimum*
- 23 *Hakea recurva*
- 24 *Desmocladius asper*
- 25 *Ehrharta longiflora**
- 26 *Dampiera lavandulacea*
- 27 *Lomandra effusa*
- 28 *Lepidosperma resinsum*
- 29 *Bromus diandrus*
- 30 *Dodonaea viscosa* ssp *angustissima*
- 31 *Kunzea pulchella*
- 32 *Muehlenbeckia adpressa*
- 33 *Stylobasium australe*
- 34 *Eriachne ovata*
- 35 *Allocasuarina campestris*
- 36 *Melaleuca acuminata*
- 37 *Melaleuca adnata*
- 38 *Acacia acuaria*
- 39 *Melaleuca radula*
- 40 *Santalum spicatum*
- 41 *Asparagus asparagoides**
- 42 *Mirbelia ramulosa*
- 43 *Ehrharta calycina**

Site: WW-22 **No. of Species:** 42

Locality: Dowerin

Vegetation: *Eucalyptus salmonophloia/salubris* woodland.

- 01 *Eucalyptus salmonophloia*
- 02 *Eucalyptus salubris*
- 03 *Eucalyptus semivestita*
- 04 *Eucalyptus celastroides* ssp *virella*
- 05 *Exocarpos aphyllus*
- 06 *Acacia merrallii*
- 07 *Olearia muelleri*
- 08 *Enchylaena tomentosa*
- 09 *Austrostipa elegantissima*
- 10 *Sclerolaena diacantha*
- 11 *Maireana marginata*
- 12 *Eremophila drummondii*
- 13 *Maireana georgei*
- 14 *Ptilotus holosericeus*
- 15 *Angianthus tomentosus*
- 16 *Mesembryanthemum nodiflorum*
- 17 *Santalum acuminatum*
- 18 *Grevillea huegelii*
- 19 *Rhagodia preissii*
- 20 *Acacia hemiteles*
- 21 *Maireana brevifolia*
- 22 *Lepidium rotundum*
- 23 *Daviesia nematophylla*
- 24 *Melaleuca coroncarpa*
- 25 *Melaleuca adnata*
- 26 *Melaleuca acuminata* ssp *acuminata*
- 27 *Eucalyptus erythronema* var *erythronema*
- 28 *Templetonia* sp. (?*sulcata*)
- 29 *Rhagodia drummondii*
- 30 *Acacia bidentata*
- 31 *Acacia erinacea*
- 32 *Cassutha melantha*
- 33 *Atriplex semibaccata*
- 34 *Acacia acuaria*
- 35 *Atriplex* sp.
- 36 *Maireana carnososa*
- 37 *Melaleuca lateriflora* ssp. *lateriflora*
- 38 *Austrostipa tenuifolia*
- 39 *Austrostipa scabra*
- 40 *Austrodanthonia caespitosa*
- 41 *Dodonaea larreoides*
- 42 *Acacia acuminata*

Site: WW-23

No. of Species: 30

Locality: Dowerin

Vegetation: *Eucalyptus salubris* woodland.

- 1 *Eucalyptus salubris*
- 2 *Acacia erinacea*
- 3 *Eremophila decipiens*
- 4 *Eremophila drummondii*
- 5 *Austrostipa elegantissima*
- 6 *Maireana marginata*
- 7 *Ptilotus holosericeus*
- 8 *Ptilotus spathulatus*
- 9 *Maireana carnososa*
- 10 *Austrodanthonia caespitosa*

- 11 *Exocarpos aphyllus*
- 12 *Santalum acuminatum*
- 13 *Dodonaea larreoides*
- 14 *Dodonaea stenozyga*
- 15 *Acacia merrallii*
- 16 *Melaleuca acuminata ssp acuminata*
- 17 *Enchylaena tomentosa*
- 18 *Angianthus tomentosus*
- 19 *Acacia colletioides*
- 20 *Bromus diandrus**
- 21 *Austrostipa trichophylla*
- 22 *Acacia ancistrophylla var ancistrophylla*
- 23 *Eucalyptus erythronema var erythronema*
- 24 *Eucalyptus salmonophloia*
- 25 *Alyxia buxifolia*
- 26 *Grevillea huegelii*
- 27 *Austrostipa trichophylla*
- 28 *Eucalyptus celastroides ssp virella*
- 29 *Eucalyptus obtusiflora*
- 30 *Eucalyptus subangusta ssp subangusta*

Site: WW-24

No. of Species: 51

Locality: Dowerin

Vegetation: *Eucalyptus loxophleba* woodland.

- 1 *Eucalyptus loxophleba*
- 2 *Acacia sp.*
- 3 *Acacia acuminata*
- 4 *Ptilotus divaricatus*
- 5 *Austrostipa elegantissima*
- 6 *Austrostipa trichophylla*
- 7 *Austrostipa variabilis*
- 8 *Neurachne alopecuroidea*
- 9 *Briza maxima**
- 10 *Avena barbata**
- 11 *Waitzia nitida*
- 12 *Ehrharta longiflora**
- 13 *Rhodanthe manglesii*
- 14 *Austrodanthonia caespitosa*
- 15 *Rhodanthe polycephala*
- 16 *Comesperma integerrimum*
- 17 *Ursinia anthemoides**
- 18 *Silene gallica*
- 19 *Ptilotus spathulatus f spathulatus*
- 20 *Glycine clandestine*
- 21 *Neurachne alopecuroidea*
- 22 *Stylobasium australe*
- 23 *Lepidosperma sp.*
- 24 *Orthrosanthus laxus var. laxus*
- 25 *Dampiera lavandulacea*
- 26 *Ptilotus polystachyus var. polystachyus*
- 27 *Lupinus cosentinii**
- 28 *Ptilotus gaudichaudii*
- 29 *Opercularia vaginata*
- 30 *Grevillea paniculata*
- 31 *Santalum spicatum*
- 32 *Dianella revoluta*
- 33 *Allocasuarina huegeliana*
- 34 *Melaleuca uncinata*

- 35 *Sida calyxhymenia*
- 36 *Glischrocaryon aureum*
- 37 *Olearia dampieri* var. *eremicola*
- 38 *Allocasuarina campestris*
- 39 *Arthropodium dyeri*
- 40 *Acacia saligna*
- 41 *Hakea petiolaris*
- 42 *Brunonia australis*
- 43 *Podolepis canescens*
- 44 *Aristida contorta*
- 45 *Lomandra effusa*
- 46 *Abutilon cryptopetalum*
- 47 *Stackhousia monogyna*
- 48 *Trachymene ornata*
- 49 *Vittadinia* sp.
- 50 *Stypandra glauca*
- 51 *Amphipogon caricinus*

Site: WW-25

No. of Species: 28

Locality: Dowerin

Vegetation: *Eucalyptus salmonophloia/salubris* woodland.

- 1 *Eucalyptus salubris*
- 2 *Eucalyptus salmonophloia*
- 3 *Melaleuca adnata*
- 4 *Ptilotus holosericeus*
- 5 *Maireana marginata*
- 6 *Austrostipa elegantissima*
- 7 *Austrodanthonia caespitosa*
- 8 *Maireana brevifolia*
- 9 *Enchylaena lanata*
- 10 *Ptilotus spathulatus* f *spathulatus*
- 11 *Melaleuca acuminata*
- 12 *Exocarpos aphyllus*
- 13 *Atriplex semibaccata*
- 14 *Melaleuca uncinata*
- 15 *Acacia colletioides*
- 16 *Salsola tragus**
- 17 *Austrostipa variabilis*
- 18 *Austrostipa* sp. (? *variabilis*)
- 19 *Santalum acuminatum*
- 20 *Daucus glochidiatus*
- 21 *Arctotheca calendula**
- 22 *Trifolium tomentosum* var. *tomentosum**
- 23 *Hordeum glaucum**
- 24 *Lolium rigidum**
- 25 *Romula rosea**
- 26 *Melaleuca lateriflora* ssp. *lateriflora*
- 27 *Chloris truncata*
- 28 *Ptilotus polystachyus* var. *polystachyus*

Site: WW-26

No. of Species: 50

Locality: Wongan Hills

Vegetation: *Eucalyptus loxophleba/Allocasuarina huegeliana* woodland.

- 1 *Eucalyptus loxophleba*
- 2 *Melaleuca hamulosa*
- 3 *Acacia acuminata*

- 4 *Allocasuarina huegeliana*
- 5 *Allocasuarina campestris*
- 6 *Hakea invaginata*
- 7 *Dianella revoluta*
- 8 *Austrostipa elegantissima*
- 9 *Aristida contorta*
- 10 *Neurachne alopecuroidea*
- 11 *Austrostipa eremophila*
- 12 *Comesperma integerrimum*
- 13 *Waitzia acuminata*
- 14 *Eriachne ovata*
- 15 *Caesia* sp.
- 16 *Lepidosperma costale*
- 17 *Melaleuca uncinata*
- 18 *Briza maxima**
- 19 *Ptilotus declinatus*
- 20 *Mirbelia ramulosa*
- 21 *Acacia saligna*
- 22 *Avena barbata**
- 23 *Ptilotus polystachyus* var. *polystachyus*
- 24 *Hibbertia rupicola*
- 25 *Dampiera lavandulacea*
- 26 *Opercularia spermacocea*
- 27 *Tricoryne tenella*
- 28 *Lobelia winfridae*
- 29 *Enchylaena tomentosa*
- 30 *Isotropis drummondii*
- 31 *Amphipogon caricinus*
- 32 *Glischrocaryon aureum*
- 33 *Melaleuca acuminata*
- 34 *Melaleuca adnata*
- 35 *Melaleuca coroncarpa*
- 36 *Thysanotus recantherus*
- 37 *Eriachne ovata*
- 38 *Amphipogon caricinus*
- 39 *Dichopogon* sp. (?*capillipes*)
- 40 *Thryptomene australis*
- 41 *Kunzea pulchella*
- 42 *Dodonaea viscosa* ssp. *angustissima*
- 43 *Hakea petiolaris*
- 44 *Stypandra glauca*
- 45 *Acacia restiacea*
- 46 *Calothamnus gilesii*
- 47 *Monachather paradoxus*
- 48 *Ptilotus spathulatus* ssp. *spathulatus*
- 49 *Acacia acuaria*
- 50 *Acacia orbifolia*

Site: WW-27

No. of Species: 51

Locality: Goomalling

Vegetation: *Eucalyptus salmonophloia/loxophleba* woodland.

- 1 *Eucalyptus loxophleba*
- 2 *Eucalyptus salmonophloia*
- 3 *Grevillea paniculata*
- 4 *Enchylaena tomentosa*
- 5 *Rhagodia drummondii*
- 6 *Desmocladius asper*
- 7 *Austrostipa elegantissima*

- 8 *Lomandra effusa*
- 9 *Austrostipa scabra*
- 10 *Austrostipa* sp. (? *variabilis*)
- 11 *Neurachne alopecuroidea*
- 12 *Nemcia obovata*
- 13 *Dampiera lavandulacea*
- 14 *Rhyncharrhena linearis*
- 15 *Comesperma integerrimum*
- 16 *Lolium rigidum**
- 17 *Avena barbata**
- 18 *Bromus* sp. (? *diandrus*)*
- 19 *Austrodanthonia caespitosa*
- 20 *Hakea preissii*
- 21 *Acacia acuminata*
- 22 *Acacia bidentata*
- 23 *Santalum spicatum*
- 24 *Dianella revoluta*
- 25 *Opercularia vaginata*
- 26 *Acacia* aff. *erinacea*
- 27 *Daviesia benthamii* ssp. *benthamii*
- 28 *Podolepis capillaris*
- 29 *Acacia* sp. (? *microbotrya*)
- 30 *Eremophila lehmanniana*
- 31 *Olearia dampieri* var. *eremicola*
- 32 *Lepidosperma tenue*
- 33 *Aristida contorta*
- 34 *Eremophila drummondii*
- 35 *Acacia ligustrina*
- 36 *Gnephosis tenuissima*
- 37 *Ptilotus declinatus*
- 38 *Caesia* sp.
- 39 *Stypandra glauca*
- 40 *Allocasuarina campestris*
- 41 *Ptilotus drummondii*
- 42 *Exocarpos aphyllus*
- 43 *Ptilotus divaricatus*
- 44 *Ptilotus polystachyus* var. *polystachyus*
- 45 *Maireana brevifolia*
- 46 *Templetonia* sp. (? *sulcata*)
- 47 *Atriplex semibaccata*
- 48 *Amphipogon caricinus*
- 49 *Stylobasium australe*
- 50 *Sclerolaena diacantha*
- 51 *Acacia erinacea*

Site: WW-28

No. of Species: 45

Locality: Goomalling

Vegetation: *Eucalyptus salmonophloia/loxophleba* and *Allocasuarina huegeliana* woodland.

- 1 *Eucalyptus loxophleba* ssp. *loxophleba*
- 2 *Eucalyptus salmonophloia*
- 3 *Acacia acuminata*
- 4 *Austrostipa*
- 5 *Neurachne alopecuroidea*
- 6 *Austrodanthonia*
- 7 *Austrostipa elegantissima*
- 8 *Amphipogon*
- 9 *Dampiera lavandulacea*
- 10 *Waitzia acuminata*

- 11 *Allocasuarina huegeliana*
- 12 *Comesperma integerrimum*
- 13 *Calytrix depressa*
- 14 *Acacia acuaria*
- 15 *Monachather paradoxus*
- 16 ? *Amphipogon* (infected with fungus)
- 17 *Opercularia vaginata*
- 18 *Ptilotus declinatus*
- 19 *Ptilotus polystachyus* var *polystachyus*
- 20 *Ptilotus spathulatus* form *a* *spathulatus*
- 21 *Acacia microbotrya*
- 22 *Mirbelia ramulosus*
- 23 *Melaleuca radula*
- 24 *Allocasuarina campestris*
- 25 *Aristida contorta*
- 26 *Lepidosperma* sp
- 27 *Lepidosperma costale*
- 28 *Trymalium daphnifolium*
- 29 *Schoenus latitans*
- 30 *Acacia* ? *aestivalis*
- 31 *Eucalyptus wandoo* ssp *wandoo*
- 32 *Eucalyptus erythronema* var *erythronema*
- 33 *Atriplex semibaccata*
- 34 *Maireana brevifolia*
- 36 *Daviesia benthamii* ssp *benthamii*
- 37 *Rhagodia drummondii*
- 38 *Melaleuca uncinata*
- 39 *Maireana marginata*
- 40 *Maireana enchylaenoides*
- 41 *Acacia bidentata*
- 42 *Enchylaena lanata*
- 43 *Lobelia winfridae*
- 44 *Lomandra effusa*
- 45 *Santalum spicatum*

Site: WW-29

No. of Species: 44

Locality: Goomalling

Vegetation: *Eucalyptus loxophleba*/*Allocasuarina huegeliana* woodland.

- 1 *Eucalyptus loxophleba*
- 2 *Allocasuarina huegeliana*
- 3 *Acacia acuminata*
- 4 *Austrostipa variabilis*
- 5 *Austrostipa elegantissima*
- 6 *Amphipogon caricinus*
- 7 *Neurachne alopecuroidea*
- 8 *Austrodanthonia caespitosa*
- 9 *Avena barbata**
- 10 *Lepidosperma costale*
- 11 *Dampiera lavandulacea*
- 12 *Waitzia acuminata*
- 13 *Ptilotus declinatus*
- 14 *Podolepis canescens*
- 15 *Dianella revoluta*
- 16 *Dichopogon capillipes*
- 17 *Comesperma integerrimum*
- 18 *Eriachne ovata*
- 19 *Opercularia vaginata*
- 20 *Aristida contorta*

- 21 *Calytrix depressa*
- 22 *Thysanotus rectantherus*
- 23 *Hemigenia sericea*
- 24 *Gastrolobium callistachys* P4
- 25 *Glischrocaryon* sp.
- 26 *Hakea petiolaris*
- 27 *Tricoryne tenella*
- 28 *Dioscorea hastifolia*
- 29 *Thysanotus dichotomus*
- 30 *Allocasuarina campestris*
- 31 *Caesia* sp. (?micrantha)
- 32 *Ptilotus polystachyus* var *polystachyus*
- 33 *Stypandra glauca*
- 34 *Santalum spicatum*
- 35 *Mirbelia ramulosa*
- 36 *Austrodanthonia caespitosa*
- 37 *Schoenus unispiculatus*
- 38 *Dodonaea pinifolia*
- 39 *Olearia dampieri* var. *eremicola*
- 40 *Kennedia prostrata*
- 41 *Phyllanthus calycinus*
- 42 *Dodonaea viscosa* var. *angustissima*
- 43 *Lepidosperma drummondii*
- 44 *Gastrolobium villosum*

Site: WW-30

No. of Species: 39

Locality: Goomalling

Vegetation: *Eucalyptus salmonophloia/longicornis/capillosa* woodland.

- 1 *Eucalyptus salmonophloia*
- 2 *Eucalyptus longicornis*
- 3 *Acacia acuminata*
- 4 *Allocasuarina campestris*
- 5 *Austrostipa nodosa*
- 6 *Austrostipa elegantissima*
- 7 *Austrodanthonia caespitosa*
- 8 *Pterostylis picta*
- 9 *Comesperma integerrimum*
- 10 *Trymalium* sp. (?daphnifolium)
- 11 *Olearia dampieri* var. *eremicola*
- 12 *Exocarpos sparteus*
- 13 *Hakea commutata*
- 14 *Santalum acuminatum*
- 15 *Acacia aestivalis*
- 16 *Lepidium rotundum*
- 17 *Ptilotus drummondii*
- 18 *Acacia erinacea*
- 19 *Neurachne alopecuroidea*
- 20 *Eremophila decipiens*
- 21 *Maireana marginata*
- 22 *Maireana diacantha*
- 23 *Ptilotus holosericeus*
- 24 *Dodonaea bursariifolia*
- 25 *Scaevola spinescens*
- 26 *Austrostipa trichophylla*
- 27 *Daucus glochadiatus*
- 28 *Avena barbata**
- 29 *Ehrharta longiflora**
- 30 *Hakea lissocarpha*

- 31 *Eucalyptus loxophleba*
- 32 *Atriplex semibaccata*
- 33 *Centaurea melitensis**
- 34 *Ptilotus polystachyus* var. *polystachyus*
- 35 *Ptilotus divaricatus* var. *divaricatus*
- 36 *Rhagodia preissii*
- 37 *Pittosporum phylliraeoides* var. *microcarpa*
- 38 *Senna* sp.
- 39 *Eucalyptus wandoo* ssp. *wandoo*

Site: WW-31

No. of Species: 19

Locality: Quairading

Vegetation: *Eucalyptus salmonophloia/capillosa* woodland.

- 1 *Eucalyptus salmonophloia*
- 2 *Eucalyptus wandoo* ssp. *wandoo*
- 3 *Acacia* sp.
- 4 *Eucalyptus celastroides* ssp. *virella*
- 5 *Eucalyptus erythronema* var. *erythronema*
- 6 *Grevillea insignis* ssp. *insignis*
- 7 *Isopogon divergens*
- 8 *Allocasuarina campestris*
- 9 *Marianthus bicolor*
- 10 *Austrostipa elegantissima*
- 11 *Dodonaea bursariifolia*
- 12 *Acacia acuminata*
- 13 *Gastrolobium trilobum*
- 14 *Austrodanthonia caespitosa*
- 15 *Melaleuca coronicarpa*
- 16 *Trymalium daphnifolium*
- 17 *Pentaschistis airoides**
- 18 *Austrostipa variabilis*
- 19 *Neurachne alopecuroidea*

Site: WW-32

No. of Species: 33

Locality: Beverley

Vegetation: *Eucalyptus salmonophloia/capillosa/loxophleba* woodland.

- 1 *Eucalyptus salmonophloia*
- 2 *Melaleuca adnata*
- 3 *Melaleuca acuminata*
- 4 *Melaleuca uncinata*
- 5 *Austrostipa elegantissima*
- 6 *Neurachne alopecuroidea*
- 7 *Austrodanthonia setacea*
- 8 *Comesperma integerrimum*
- 9 *Eucalyptus wandoo* ssp. *wandoo*
- 10 *Eucalyptus loxophleba* ssp. *loxophleba*
- 11 *Eucalyptus rudis*
- 12 *Chorizema racemosum*
- 13 *Ptilotus manglesii*
- 14 *Plantago coronopus*
- 15 *Calocephalus multiflorus*
- 16 *Pogonolepis muelleriana*
- 17 *Hakea preissii*
- 18 *Templetonia* sp. (?*sulcata*)
- 19 *Austrostipa trichophylla*
- 20 *Avena barbata**

- 21 *Wilsonia humilis*
- 22 *Podolepis capillaris*
- 23 *Hordeum glaucum**
- 24 *Vulpia myuros* var. *megalura*
- 25 *Stenanthemum* sp.
- 26 *Gahnia* sp.
- 27 *Comesperma* sp.
- 28 *Casuarina obesa*
- 29 *Juncus radula*
- 30 *Aristida contorta*
- 31 *Ptilotus declinatus*
- 32 *Ptilotus drummondii*
- 33 *Stylobasium australe*

Site: WW-33

No. of Species: 38

Locality: Pingelly

Vegetation: *Eucalyptus salmonophloia*/wandoo woodland.

- 1 *Eucalyptus salmonophloia*
- 2 *Eucalyptus wandoo* ssp. *wandoo*
- 3 *Dodonaea bursariifolia*
- 4 *Grevillea huegelii*
- 5 *Lomandra effusa*
- 6 *Astroloma* sp.
- 7 *Acacia lasiocarpa* var. *sedifolia*
- 8 *Austrodanthonia caespitosa*
- 9 *Austrostipa elegantissima*
- 10 *Austrostipa hemipogon*
- 11 *Lepidosperma* sp.
- 12 *Hakea lasiocarpa*
- 13 *Westringia rigida*
- 14 *Gastrolobium spinosum*
- 15 *Phebalium tuberculatum*
- 16 *Neurachne alopecuroidea*
- 17 *Austrostipa variabilis*
- 18 *Allocasuarina campestris*
- 19 *Santalum acuminatum*
- 20 *Bossiaea eriocarpa*
- 21 *Dryandra armata*
- 22 *Schoenus* sp.
- 23 *Desmocladius asper*
- 24 *Sollya heterophylla*
- 25 *Acacia acuminata*
- 26 *Muehlenbeckia adpressa*
- 27 *Stackhousia monogyna*
- 28 *Melaleuca tuberculata*
- 29 *Lepidosperma* sp.
- 30 *Banksia sphaerocarpa*
- 31 *Hakea lehmanniana*
- 32 *Gnephosis tenuissima*
- 33 *Helichrysum leucopsidium*
- 34 *Opercularia vaginata*
- 35 *Melaleuca uncinata*
- 36 *Bossiaea spinescens*
- 37 *Eucalyptus flocktoniae* ssp. *flocktoniae*
- 38 *Allocasuarina huegeliana*

Site: WW-34

No. of Species: 42

Locality: Pingelly

Vegetation: *Eucalyptus salmonophloia*/wandoo woodland.

- 1 *Eucalyptus salmonophloia*
- 2 *Eucalyptus wandoo*
- 3 *Bossiaea spinescens*
- 4 *Acacia lasiocarpa*
- 5 *Lomandra effusa*
- 6 *Dianella revoluta*
- 7 *Austrostipa elegantissima*
- 8 *Austrostipa hemipogon*
- 9 *Austrostipa varibilis*
- 10 *Neurachne alopecuroidea*
- 11 *Austrodanthonia caespitosa*
- 12 *Podolepis capillaris*
- 13 *Gahnia ancistrophylla*
- 14 *Desmocladus asper*
- 15 *Dodonaea bursariifolia*
- 16 *Helichrysum leucopsideum*
- 17 *Ptilotus manglesii*
- 18 *Gnephosis tenuissima*
- 19 *Stackhousia monogyna*
- 20 *Amphipogon caricinus*
- 21 *Lepidosperma* sp.
- 22 *Stypandra glauca*
- 23 *Gastrolobium spinosum*
- 24 *Santalum acuminatum*
- 25 *Leptospermum* sp.
- 26 *Grevillea paniculata*
- 27 *Acacia leptospermoides* ssp. *leptospermoides*
- 28 *Maireana brevifolia*
- 29 *Eucalyptus 'orthostomon'* ms
- 30 *Austrostipa scabra*
- 31 *Lomandra micrantha* ssp. *teretifolia*
- 32 *Stenanthemum* sp.
- 33 *Isotropis cuneifolia*
- 34 *Mesembryanthemum nodiflora*
- 35 *Opercularia vaginata*
- 36 *Ptilotus polystachyus*
- 37 *Trymalium daphnifolium*
- 38 *Templetonia* sp.
- 39 *Lepidosperma resinolum*
- 40 *Patersonia occidentalis*
- 41 *Astroloma epacridis*
- 42 *Austrostipa exilis* P2

Site: WW-35

No. of Species: 39

Locality: Beverley

Vegetation: *Eucalyptus longicornis*/wandoo & *Allocasuarina huegeliana* woodland.

- 1 *Eucalyptus longicornis*
- 2 *Eucalyptus wandoo*
- 3 *Allocasuarina huegeliana*
- 4 *Gastrolobium parviflorum*
- 5 *Gastrolobium trilobum*
- 6 *Dodonaea bursariifolia*
- 7 *Rhagodia preissii*
- 8 *Astroloma* sp.
- 9 *Lepidosperma tuberculatum*

- 10 *Hypocalymma angustifolium*
- 11 *Ehrharta longiflora**
- 12 *Pterostylis* sp.
- 13 *Lomandra effusa*
- 14 *Lepidosperma* sp.
- 15 *Austrostipa elegantissima*
- 16 *Austrodanthonia caespitosa*
- 17 *Neurachne alopecuroidea*
- 18 *Acacia* sp (? *microbotrya*)
- 19 *Austrostipa hemipogon*
- 20 *Glischrocaryon aureum*
- 21 *Acacia lasiocarpa*
- 22 *Acacia erinacea*
- 23 *Orthrosanthus laxus* var. *laxus*
- 24 *Laxmannia squarrosa*
- 25 *Comesperma integerrimum*
- 26 *Podolepis capillaris*
- 27 *Dampiera lavandulacea*
- 28 *Amphipogon caricinus*
- 29 *Goodenia convexa*
- 30 *Xanthorrhoea drummondii*
- 31 *Desmocladius asper*
- 32 *Lagenophora huegelii*
- 33 *Caesia* sp.
- 34 *Helichrysum leucopsideum*
- 35 *Goodenia pinifolia*
- 36 *Ptilotus drummondii*
- 37 *Atriplex semibaccata*
- 38 *Opercularia spermacocea*
- 39 *Eucalyptus phenax* ssp. *phenax*

Site: WW-36

No. of Species: 24

Locality: Pingelly

Vegetation: *Eucalyptus loxophleba*, *Allocasuarina huegeliana* & *Acacia acuminata* woodland.

- 1 *Eucalyptus loxophleba*
- 2 *Acacia acuminata*
- 3 *Stackhousia monogyna*
- 4 *Austrostipa trichophylla*
- 5 *Avena barbata**
- 6 *Podolepis lessonii*
- 7 *Ehrharta longiflora**
- 8 *Caesia* sp. (? *micrantha*)
- 9 *Allocasuarina huegeliana*
- 10 *Oxalis corniculata**
- 11 *Austrodanthonia caespitosa*
- 12 *Gastrolobium bilobum*
- 13 *Velleia trinervis*
- 14 *Asparagus asparagoides**
- 15 *Neurachne alopecuroidea*
- 16 *Gnephosis tenuissima*
- 17 *Ptilotus spathulatus* f *spathulatus*
- 18 *Ptilotus manglesii*
- 19 *Ptilotus declinatus*
- 20 *Eucalyptus wandoo* ssp. *wandoo*
- 21 *Acacia microbotrya*
- 22 *Austrostipa hemipogon*
- 23 *Astroloma* sp.
- 24 *Austrostipa elegantissima*

Site: WW-37

No. of Species: 31

Locality: Cuballing

Vegetation: *Eucalyptus loxophleba*, *Allocasuarina huegeliana* & *Acacia acuminata* woodland.

- 1 *Eucalyptus loxophleba*
- 2 *Allocasuarina huegeliana*
- 3 *Acacia acuminata*
- 4 *Hibbertia teretifolia*
- 5 *Austrostipa elegantissima*
- 6 *Austrostipa* sp. (?hemipogon)
- 7 *Neurachne alopecuroidea*
- 8 *Ptilotus spathulatus*
- 9 *Lagenophora huegelii*
- 10 *Dichopogon capillipes*
- 11 *Lepidosperma costale*
- 12 *Brachypodium distachyon*
- 13 *Avena barbata**
- 14 *Stackhousia monogyna*
- 15 *Desmocladius asper*
- 16 *Cheilanthes sieberi*
- 17 *Daucus glochidiatus*
- 18 *Oxalis corniculata**
- 19 *Stypandra glauca*
- 20 *Ptilotus declinatus*
- 21 *Glischrocaryon aureum*
- 22 *Hibbertia commutata*
- 23 *Astroloma cataphractum*
- 24 *Gastrolobium bilobum*
- 25 *Acacia lasiocarpa* var. *sedifolia*
- 26 *Ptilotus manglesii*
- 27 *Stylidium uniflorum*
- 28 *Austrodanthonia setacea*
- 29 *Astroloma pallida*
- 30 *Dianella revoluta*
- 31 *Lepidosperma* sp.

Site: WW-38

No. of Species: 34

Locality: Corrigin

Vegetation: *Eucalyptus salmonophloia/capillosa* woodland.

- 1 *Eucalyptus salmonophloia*
- 2 *Melaleuca adnata*
- 3 *Lomandra effusa*
- 4 *Dianella revoluta*
- 5 *Neurachne alopecuroidea*
- 6 *Lepidosperma* sp.
- 7 *Olearia dampieri* var. *eremicola*
- 8 *Templetonia* sp. (?sulcata)
- 9 *Austrostipa elegantissima*
- 10 *Austrostipa* sp.
- 11 *Austrostipa variabilis*
- 12 *Austrodanthonia* sp.
- 13 *Wilsonia humilis*
- 14 *Grevillea paniculata*
- 15 *Acacia acuminata*
- 16 *Acacia saligna*
- 17 *Bossiaea* sp. (undescribed species)

- 18 *Gahnia* sp.
- 19 *Podolepis capillaris*
- 20 *Gnephosis tenuissima*
- 21 *Stackhousia monogyna*
- 22 *Hakea lissocarpha*
- 23 *Acacia erinacea*
- 24 *Santalum acuminatum*
- 25 *Melaleuca acuminata*
- 26 *Allocasuarina campestris*
- 27 *Leptospermum erubescens*
- 28 *Schoenus sesquispiculus*
- 29 *Dampiera lavandulacea*
- 30 *Lepidobolus* sp.
- 31 *Eremophila lehmanniana*
- 32 *Eucalyptus wandoo* ssp. *wandoo*
- 33 *Eucalyptus loxophleba* ssp. *loxophleba*
- 34 *Desmocladius asper*

Site: WW-39

No. of Species: 31

Locality: Narembeen

Vegetation: *Eucalyptus salmonophloia/longicornis* woodland.

- 1 *Eucalyptus longicornis*
- 2 *Eucalyptus salubris*
- 3 *Eucalyptus* sp. (no voucher)
- 4 *Templetonia* sp. (?*sulcata*)
- 5 *Sclerolaena diacantha*
- 6 *Austrostipa elegantissima*
- 7 *Atriplex* sp. (no voucher)
- 8 *Zygophyllum apiculatum*
- 9 *Melaleuca adnata*
- 10 *Olearia muelleri*
- 11 *Eremophila drummondii*
- 12 *Acacia merrallii*
- 13 *Melaleuca acuminata*
- 14 *Melaleuca lanceolata*
- 15 *Daviesia argillacea*
- 16 *Enchylaena* sp. (? *tomentosa*)
- 17 *Eucalyptus salmonophloia*
- 18 *Melaleuca lateriflora* ssp. *lateriflora*
- 19 *Zygophyllum* sp.
- 20 *Austrostipa scabra*
- 21 *Austrostipa scabra*
- 22 *Santalum acuminatum*
- 23 *Alyxia buxifolia*
- 24 *Acacia erinacea*
- 25 *Maireana marginata*
- 26 *Eremophila decipiens*
- 27 *Senna artemisioides*
- 28 *Vittadinia humerata*
- 29 *Rhagodia preissii*
- 30 *Centaurea melitensis**
- 31 *Austrostipa trichophylla*

Site: WW-40

No. of Species: 39

Locality: Narembeen

Vegetation: *Eucalyptus loxophleba* & *Acacia acuminata* woodland.

- 1 *Eucalyptus loxophleba* ssp. *lissophloia*
- 2 *Santalum acuminatum*
- 3 *Melaleuca acuminata*
- 4 *Lomandra effusa*
- 5 *Neurachne alopecuroidea*
- 6 *Austrodanthonia caespitosa*
- 7 *Dampiera lavandulacea*
- 8 *Acacia acuminata*
- 9 *Austrostipa variabilis*
- 10 *Austrostipa eremophila*
- 11 *Austrostipa variabilis*
- 12 *Santalum acuminatum*
- 13 *Grevillea paniculata*
- 14 *Melaleuca radula*
- 15 *Austrostipa elegantissima*
- 16 *Dianella revoluta*
- 17 *Aristida contorta*
- 18 *Acacia assimilis* ssp. *assimilis*
- 19 *Mirbelia ramulosa*
- 20 *Allocasuarina campestris*
- 21 *Kerraudrenia integrifolia*
- 22 *Lepidosperma* sp.
- 23 *Amphipogon caricinus*
- 24 *Daviesia benthamii* ssp. *benthamii*
- 25 *Melaleuca uncinata*
- 26 *Spartochloa scirpoidea*
- 27 *Eremophila lehmanniana*
- 28 *Rhagodia preissii*
- 29 *Chenopodium desertorum* ssp. *microphyllum*
- 30 *Stenanthemum* sp.
- 31 *Sclerolaena diacantha*
- 32 *Acacia erinacea*
- 33 *Vittidinia cervicularis*
- 34 *Enchylaena lanata*
- 35 *Acacia leptopetala*
- 36 *Melaleuca* sp.
- 37 *Acacia hemiteles*
- 38 *Acacia acuata*
- 39 *Melaleuca adnata*

Site: WW-41

No. of Species: 49

Locality: Harrismith

Vegetation: *Eucalyptus longicornis/salmonophloia* woodland.

- 1 *Eucalyptus salmonophloia*
- 2 *Eucalyptus longicornis*
- 3 *Templetonia* sp. (?*sulcata*)
- 4 *Acacia erinacea*
- 5 *Lomandra* sp.
- 6 *Lomandra effusa*
- 7 *Austrostipa elegantissima*
- 8 *Austrodanthonia setacea*
- 9 *Austrostipa trichophylla*
- 10 *Gahnia* sp.
- 11 *Comesperma integerrimum*
- 12 *Ozothamnus lepidophyllus*
- 13 *Santalum acuminatum*
- 14 *Acacia acuminata*
- 15 *Eremophila glabra*

- 16 *Olearia dampieri* var. *eremicola*
- 17 *Chenopodium desertorum* var. *microphyllum*
- 18 *Dianella revoluta*
- 19 *Cryptandra* sp.
- 20 *Billardiera* sp.
- 21 *Lepidosperma* sp.
- 22 *Eucalyptus loxophleba* ssp. *loxophleba*
- 23 *Acacia lasiocarpa*
- 24 *Melaleuca acuminata*
- 25 *Stenanthemum* sp.
- 26 *Acacia* sp. (?*microbotrya*)
- 27 *Melaleuca uncinata*
- 28 *Choretrum glomeratum*
- 29 *Desmocladius asper*
- 30 *Austrostipa trichophylla*
- 31 *Phebalium tuberculosum*
- 32 *Dodonaea* sp.
- 33 *Hakea lissocarpha*
- 34 *Melaleuca coronicarpa*
- 35 *Grevillea huegelii*
- 36 *Pittosporum phylliraeoides*
- 37 *Daviesia benthamii* ssp. *acanthoclona*
- 38 *Eremophila lehmanniana*
- 39 *Neurachne alopecuroidea*
- 40 *Ptilotus drummondii*
- 41 *Gastrolobium crassifolium*
- 42 *Olearia muelleri*
- 43 *Pimelea argentea*
- 44 *Astroloma epacridis*
- 45 *Dampiera lavandulacea*
- 46 *Wilsonia humilis*
- 47 *Eucalyptus phanex* ssp. *phanex*
- 48 *Eucalyptus wandoo* ssp. *wandoo*
- 49 *Helichrysum leucopsideum*

Site: WW-42 **No. of Species:** 26
Locality: Mukinbudin
Vegetation: *Eucalyptus salubris* woodland.

- 1 *Eucalyptus salubris*
- 2 *Acacia erinacea*
- 3 *Olearia muelleri*
- 4 *Eremophila oppositifolia*
- 5 *Acacia mackeyana*
- 6 *Maireana tricoptera*
- 7 *Sclerolaena diacantha*
- 8 *Rhagodia sp. (? drummondii)*
- 9 *Sclerolaena drummondii*
- 10 *Austrodanthonia sp.*
- 11 *Austrostipa elegantissima*
- 12 *Santalum acuminatum*
- 13 *Eremophila drummondii*
- 14 *Exocarpos aphyllus*
- 15 *Maireana thesoides*
- 15a *Maireana georgei*
- 16 *Eucalyptus sp.*
- 17 *Ptilotus exaltatus*
- 18 *Solanum nummularium*
- 19 *Scaevola spinescens*
- 20 *Ptilotus obovatus*
- 21 *Alyxia buxifolia*
- 22 *Senna artemisioides*
- 23 *Eucalyptus sp.*
- 24 *Eucalyptus sp.*
- 25 *Xerolirion divaricata*
- 26 *Calytrix leschenaultii*

Site: WW-43 **No. of Species:** 41
Locality: Mukinbudin
Vegetation: *Eucalyptus salubris* woodland.

- 1 *Eucalyptus salubris*
- 2 *Eremophila decipiens*
- 3 *Olearia exiguifolia*
- 4 *Acacia enervia ssp. explicata*
- 5 *Austrodanthonia caespitosa*
- 6 *Eremophila drummondii*
- 7 *Olearia muelleri*
- 8 *Austrostipa elegantissima*
- 9 *Grevillea acuaria*
- 10 *Podolepis capillaris*
- 11 *Rhagodia drummondii*
- 12 *Maireana georgei*
- 13 *Monachather paradoxus*
- 14 *Lomandra effusa*
- 15 *Maireana tricoptera*
- 16 *Exocarpos aphyllus*
- 17 *Dodonaea viscosa ssp. angustissima*
- 18 *Waitzia acuminata*
- 19 *Austrodanthonia caespitosa*
- 20 *Aristida contorta*
- 21 *Ptilotus exaltatus*
- 22 *Maireana carnososa*

- 23 *Hyalosperma glutinosum* ssp. *glutinosum*
- 24 *Hyalosperma demissum*
- 25 *Schoenia cassiniana*
- 26 *Trachymene cyanopetala*
- 27 *Triodia scariosa*
- 28 *Grevillea* sp.
- 29 *Acacia coolgardiensis* ssp. *coolgardiensis*
- 30 *Westringia cephalantha*
- 31 *Senna artemisioides* ssp. *filifolia*
- 32 *Acacia acuminata*
- 33 *Euphorbia drummondii*
- 34 *Acacia colletioides*
- 35 *Alyxia buxifolia*
- 36 *Eremophila oppositifolia*
- 37 *Eucalyptus* sp.
- 38 *Olearia pimeleoides* ssp. *pimeleoides*
- 39 *Cephalopterum drummondii*
- 40 *Comesperma integerrimum*
- 41 *Rinzia* sp.

Site: WW-44

No. of Species: 28

Locality: Mukinbudin

Vegetation: *Eucalyptus salmonophloia/loxophleba* woodland.

- 1 *Senna artemisioides*
- 2 *Maireana georgei*
- 3 *Dodonaea viscosa* ssp. *angustissima*
- 4 *Exocarpos aphyllus*
- 5 *Olearia pimeleoides* ssp. *pimeleoides*
- 6 *Enchylaena lanata*
- 7 *Austrostipa scabra*
- 8 *Acacia acuminata*
- 9 *Sclerolaena diacantha*
- 10 *Monochather paradoxus*
- 11 *Ptilotus exaltatus*
- 12 *Podolepis capillaris*
- 13 *Eucalyptus salmonophloia*
- 14 *Templetonia sulcata*
- 14a *Bossiaea walkeri*
- 15 *Hakea recurva*
- 16 *Santalum acuminatum*
- 17 *Acacia hemiteles*
- 18 *Eucalyptus loxophleba*
- 19 *Ptilotus obovatus*
- 20 *Solanum nummularia*
- 21 *Pittosporum angustifolium*
- 22 *Scaevola spinescens*
- 23 *Acacia colletioides*
- 24 *Austrostipa elegantissima*
- 25 *Lomandra effusa*
- 26 *Eucalyptus* sp.
- 27 *Aristida contorta*
- 28 *Grevillea* sp.

Site: WW-45

No. of Species: 23

Locality: Mukinbudin

Vegetation: *Eucalyptus salubris* woodland.

- 1 *Eucalyptus salubris*
- 2 *Atriplex* sp. (? *bunburyana*)
- 3 *Eremophila oppositifolia*
- 4 *Scaevola spinescens*
- 5 *Maireana triptera*
- 6 *Maireana tricoptera*
- 7 *Olearia muelleri*
- 8 *Ptilotus exaltatus*
- 9 *Austrostipa* sp. (? *scabra*)
- 10 *Acacia erinacea*
- 11 *Austrostipa elegantissima*
- 12 *Eremophila ionantha*
- 13 *Lycium australe*
- 14 *Maireana triptera*
- 15 *Acacia ramulosa* var. *ramulosa*
- 16 *Senna charlesiana*
- 17 *Eucalyptus* sp.
- 18 *Eucalyptus* sp.
- 19 *Maireana thesioides*
- 20 *Austrodanthonia caespitosa*
- 21 *Pittosporum angustifolium*
- 22 *Santalum acuminatum*
- 23 *Acacia colletioides*

Site: WW-46

No. of Species: 53

Locality: Beverley

Vegetation: *Eucalyptus salmonophloia*/wandoo woodland.

- 1 *Acacia erinacea*
- 2 *Acacia lasiocarpa*
- 3 *Stylobasium australe*
- 4 *Rhagodia preissii* ssp. *preissii*
- 5 *Westringia rigida*
- 6 *Dichopogon capillipes*
- 7 *Templetonia* sp.
- 8 *Dianella revoluta*
- 9 *Lomandra effusa*
- 10 *Neurachne alopecuroidea*
- 11 *Calandrinia calyptrata*
- 12 *Daucus glochidiatus*
- 13 *Maireana enchylaenoides*
- 14 *Lagenophora huegelii*
- 15 *Lepidium* sp.
- 16 *Eucalyptus salmonophloia*
- 17 *Ptilotus drummondii*
- 18 *Daviesia benthamii* ssp. *benthamii*
- 19 *Ehrharta longiflora*
- 20 *Romulea rosea*
- 21 *Hypochaeris glabra*
- 22 *Austrostipa* sp.
- 23 *Austrostipa elegantissima*
- 24 *Trachymene ornata*
- 25 *Brachyscome perpusilla* var. *tenella*
- 26 *Rhodanthe laevis*
- 27 *Amyema* sp.
- 28 *Melaleuca acuminata* ssp. *websteri*
- 29 *Acacia lasiocarpa* var. *sedifolia*
- 30 *Olearia dampieri* var. *eremicola*
- 31 *Acacia leptopetala*

- 32 *Acacia acuminata*
- 33 *Austrostipa elegantissima*
- 34 *Comesperma integerrimum*
- 35 *Helichrysum leucopsidium*
- 36 *Acacia ligustrina*
- 37 *Vulpia bromoides*
- 38 *Orthrosanthus laxus* var. *gramineus*
- 39 *Thysanotus patersonii*
- 40 *Ptilotus manglesii*
- 41 *Diuris brumalis*
- 42 *Platysace maxwellii*
- 43 *Drosera macrantha* ssp. *macrantha*
- 44 *Maireana enchylaenoides*
- 45 *Stypandra glauca*
- 46 *Thysanotus rectantherus*
- 47 *Astroloma serratifolium*
- 48 *Brassica tournefortii*
- 49 *Hyalosperma glutinosum* ssp. *glutinosum*
- 50 *Thelymitra* sp.
- 51 *Goodenia berardiana*
- 52 *Thysanotus manglesianus*
- 53 *Lepidium* sp.

Site: WW-47 **No. of Species:** 30

Locality: Beverley

Vegetation: *Eucalyptus longicornis* woodland.

- 1 *Rhagodia preissii* ssp. *preissii*
- 2 *Austrostipa elegantissima*
- 3 *Lepidium rotundum*
- 4 *Ehrharta longiflora*
- 5 *Austrodanthonia* sp.
- 6 *Westringia rigida*
- 7 *Pittosporum angustifolium*
- 8 *Acacia erinacea*
- 9 *Grevillea huegelii*
- 10 *Lomandra effusa*
- 11 *Calandrinia calyptrata*
- 12 *Eucalyptus longicornis*
- 13 *Melaleuca acuminata*
- 14 *Olearia dampieri* var. *eremicola*
- 15 *Acacia lineolata* ssp. *lineolata*
- 16 *Austrostipa nitida*
- 17 *Austrostipa flavescens*
- 18 *Senna artemisioides* ssp. *filifolia*
- 19 *Santalum acuminatum*
- 20 *Acacia verricula*
- 21 *Eremophila glabra*
- 22 *Daviesia pachyloma*
- 23 *Nemcia obovata*
- 24 *Hakea preissii*
- 25 *Templetonia* sp.
- 26 *Austrodanthonia* sp.
- 27 *Bromus rubens*
- 27a *Vulpia muralis*
- 28 *Drosera macrantha*
- 29 *Brachyscome ciliaris*
- 30 *Lawrencella rosea*

Site: WW-48

No. of Species: 43

Locality: Kununoppin

Vegetation: *Eucalyptus salmonophloia/salubris* woodland.

- 1 *Maireana georgei*
- 2 *Maireana tricoptera*
- 3 *Enchylaena lanata*
- 4 *Acacia erinacea*
- 5 *Rhagodia drummondii*
- 6 *Atriplex semibaccata*
- 7 *Austrostipa elegantissima*
- 8 *Eucalyptus salmonophloia*
- 9 *Brassica tournefortii*
- 10 *Ptilotus exaltatus*
- 11 *Podolepis capillaris*
- 12 *Ptilotus holosericeus*
- 13 *Lolium rigidum*
- 14 *Calandrinia calyptrata*
- 15 *Lepidium oxytrichum*
- 16 *Acacia hemiteles*
- 17 *Ehrharta longiflora*
- 18 *Arctotheca calendula*
- 19 *Podotheca angustifolia*
- 20 *Parietaria cardiostegia*
- 21 *Eucalyptus salubris*
- 22 *Daviesia nematophylla*
- 23 *Scaevola spinescens*
- 24 *Santalum spicatum*
- 25 *Olearia muelleri*
- 26 *Sclerolaena diacantha*
- 27 *Exocarpos aphyllus*
- 28 *Acacia merrallii*
- 29 *Eremophila oppositifolia*
- 30 *Eremophila drummondii*
- 31 *Brachyscome* sp (? *ciliaris*)
- 32 *Medicago minima*
- 32a *Calotis erinacea*
- 33 *Gilruthia osbornei*
- 34 *Waitzia acuminata* var. *acuminata*
- 35 *Mesembryanthemum crystallinum*
- 36 *Wahlenbergia gracilentia*
- 37 *Pentaschistis airoides*
- 38 *Enchylaena* sp. (? *lanata*)
- 39 *Sclerolaena drummondii*
- 40 *Bromus rubens*
- 41 *Vulpia myuros* var. *myuros*
- 42 *Austrostipa nitida*
- 43 *Austrostipa elegantissima*

Site: WW-49

No. of Species: 43

Locality: Kellerberrin

Vegetation: *Eucalyptus salubris* woodland.

- 1 *Trachymene cyanopetala*
- 2 *Hyalosperma demmisum*
- 3 *Isoetopsis graminifolia*
- 4 *Erymophyllum tenellum*
- 5 *Triglochin* spA

- 6 *Podolepis lessonii*
- 7 *Calotis hispidula*
- 8 *Plantago debilis*
- 9 *Calandrinia* sp.
- 10 *Eucalyptus salubris*
- 11 *Enchylaena* sp.
- 12 *Atriplex* sp.
- 13 *Atriplex* sp.
- 14 *Acacia* sp (? *sclerophylla*)
- 15 *Olearia muelleri*
- 16 *Bulbine semibarbata*
- 17 *Rhagodia drummondii*
- 18 *Austrostipa scabra*
- 19 *Avena barbata*
- 20 *Templetonia* sp.
- 21 *Sclerolaena diacantha*
- 22 *Goodenia* sp.
- 23 *Bromus rubens*
- 24 *Arthropodium* sp. (? *dyeri*)
- 25 *Austrostipa* sp.
- 26 *Ptilotus spathulatus* f *spathulatus*
- 27 *Erodium botrys*
- 28 *Pentaschistis airoides*
- 28a *Austrostipa* sp.
- 29 *Santalum acuminatum*
- 30 *Senna artemisioides* ssp. *filifolia*
- 31 *Acacia erinacea*
- 32 *Zygophyllum eremaeum*
- 33 *Austrostipa elegantissima*
- 34 ?*Micropterum papulosum*
- 35 *Vulpia myuros*
- 36 *Triptris clandestina*
- 37 *Podolepis lessonii*
- 39 *Hyalosperma glutinosum* ssp. *glutinosum*
- 40 *Waitzia acuminata* var *acuminatum*
- 41 *Hypochaeris glabra*
- 42 *Rhodanthe manglesii*
- 43 *Goodenia berardiana*

Site: WW-50 **No. of Species:** 33

Locality: Kellerberrin

Vegetation: *Eucalyptus loxophleba* woodland.

- 1 *Eucalyptus loxophleba*
- 2 *Acacia acuminata*
- 3 *Olearia dampieri* var. *eremicola*
- 4 *Dampiera lavandulacea*
- 5 *Austrostipa elegantissima*
- 6 *Lomandra effusa*
- 7 *Podolepis capillaris*
- 8 *Lawrencella rosea*
- 9 *Austrostipa caespitosa*
- 10 *Borya sphaerocephala*
- 11 *Desmocladius asper*
- 12 *Neurachne alopecuroidea*
- 13 *Schoenus* sp (? *latitans*)
- 14 *Tripteris clandestina*
- 15 *Austrostipa variabilis*
- 16 *Goodenia berardiana*

- 17 *Waitzia acuminata*
- 18 *Ursinia anthemoides*
- 19 *Comesperma integerrimum*
- 20 *Trachymene cyanopetala*
- 21 *Podolepis lessonii*
- 22 *Anagallis arvensis* var. *caerulea*
- 23 *Calandrinia calyptrata*
- 24 *Santalum spicatum*
- 25 *Acacia microbotrya*
- 26 *Eremophila glabra*
- 27 *Calytrix leschenaultii*
- 28 *Lepidosperma tenue*
- 29 *Dianella revoluta*
- 30 *Templetonia aculeata*
- 31 *Caesia micrantha*
- 32 *Ptilotus drummondii*
- 33 *Drosera* sp.

Site: WW-51 **No. of Species:** 26

Locality: Kellerberrin

Vegetation: *Eucalyptus loxophleba* woodland.

- 1 *Eucalyptus loxophleba*
- 2 *Desmocladius asper*
- 3 *Acacia acuaria*
- 4 *Grevillea paniculata*
- 5 *Lomandra effusa*
- 6 *Neurachne alopecuroidea*
- 7 *Dampiera lavandulacea*
- 8 *Borya sphaerocephala*
- 9 *Lepidosperma* aff. *costale*
- 10 *Podolepis capillaris*
- 11 *Acacia acuminata*
- 12 *Austrostipa scabra*
- 13 *Gastrolobium parviflorum*
- 14 *Isotropis cuneifolia*
- 15 *Hypochaeris glabra*
- 16 *Arctotheca calendula*
- 17 *Rhodanthe manglesii*
- 18 *Arthropodium dyeri*
- 19 *Daviesia benthamii* ssp. *benthamii*
- 20 *Eremophila lehmanniana*
- 21 *Acacia erinacea*
- 22 *Hakea recurva*
- 23 *Ptilotus drummondii*
- 24 *Briza maxima*
- 25 *Lawrencella rosea*
- 26 *Cheilanthes seiberi* ssp. *seiberi*

Site: WW-52 **No. of Species:** 42

Locality: Dowerin

Vegetation: *Eucalyptus loxophleba* woodland.

- 1 *Waitzia acuminata* ssp. *acuminata*
- 2 *Podolepis lessonii*
- 3 *Hyalosperma glutinosum* ssp. *glutinosum*
- 4 *Goodenia berardiana*
- 5 *Ursinia anthemoides*

- 6 *Podotheca angustifolia*
- 7 *Velleia cyanopotamica*
- 8 *Ceratogyne obionoides*
- 9 *Pentaschistis airoides*
- 10 *Rhodanthe manglesii*
- 11 *Trachymene cyanopelala*
- 12 *Actinobole ulginosum*
- 13 *Eucalyptus loxophleba*
- 14 *Stypandra glauca*
- 15 *Hibbertia glomerosa*
- 16 *Aristida contorta*
- 17 *Austrostipa trichophylla*
- 17a *Austrostipa exilis* P2
- 18 *Austrostipa scabra*
- 19 *Neurachne alopecuroidea*
- 20 *Borya sphaerocephala*
- 21 *Mirbelia ramulosa*
- 22 *Desmocladus asper*
- 23 *Ecdeiocolea monostachya*
- 24 *Hypochaeris glabra*
- 25 *Briza maxima*
- 26 *Bromus rubens*
- 27 *Thysanotus* sp
- 28 *Bulbine semibarbata*
- 29 *Olearia muelleri*
- 30 *Maireana marginata*
- 31 *Templetonia* sp.
- 32 *Acacia hemiteles*
- 33 *Lepidosperma brunonianum*
- 34 *Parietaria* sp (? *cardiosteia*)
- 35 *Lepidosperma tenue*
- 36 *Stenanthemum* sp.
- 37 *Baeckea* sp.
- 38 *Santalum acuminatum*
- 39 *Acacia erinacea*
- 40 *Acacia restiacea*
- 41 *Acacia sessilispica*
- 42 *Nemcia obovatus*

Site: WW-53

No. of Species: 15

Locality: Dowerin

Vegetation: *Eucalyptus salmonophloia* woodland.

- 1 *Rhagodia preissii* ssp. *preissii*
- 2 *Eremophila drummondii*
- 3 *Enchylaena lanata*
- 4 *Maireana brevifolia*
- 5 *Exocarpos aphyllus*
- 6 *Rhagodia drummondii*
- 7 *Austrostipa elegantissima*
- 8 *Austrodanthonia* sp.
- 9 *Bromus rubens*
- 10 *Eucalyptus salmonophloia*
- 10a *Acacia saxatilis*
- 11 *Melaleuca adnata*
- 12 *Santalum acuminatum*
- 13 *Melaleuca acuminata* ssp. *websteri*
- 14 *Olearia muelleri*
- 15 *Maireana carnososa*

Site: WW-54 **No. of Species:** 29

Locality: Dowerin

Vegetation: *Eucalyptus pyriformis* woodland/scrub.

- 1 *Eucalyptus* sp.
- 2 *Scholtzia drummondii*
- 3 *Rhagodia drummondii*
- 4 *Leptospermum erubescens*
- 5 *Acacia assimilis* ssp. *assimilis*
- 6 *Podolepis canescens*
- 7 *Desmocladius asper*
- 8 *Ecdeiocolea monostachya*
- 9 *Calytrix leschenaultii*
- 10 *Aristida contorta*
- 11 *Waitzia acuminata* var. *acuminata*
- 12 *Ursinia anthemoides*
- 13 *Hypochaeris glabra*
- 14 *Wahlenbergia* sp.
- 15 *Podotheca gnaphalioides*
- 16 *Eucalyptus* sp.
- 17 *Dodonaea viscosa* ssp. *angustissima*
- 18 *Tripteris clandestina*
- 19 *Thysanotus* sp
- 20 *Caladenia flava*
- 21 *Acacia lasiocarpa* var. *sedifolia*
- 22 *Melaleuca* sp.
- 23 *Dampiera lavandulacea*
- 24 *Podolepis capillaris*
- 25 *Aristida contorta*
- 26 *Ehrharta brevifolia*
- 27 *Hibbertia rupicola*
- 29 *Dianella revoluta* var. *divaricata*

Site: WW-55 **No. of Species:** 46

Locality: Wongan Hills

Vegetation: *Eucalyptus loxophleba* woodland.

- 1 *Waitzia nitida*
- 2 *Cephalopterum drummondii*
- 3 *Velleia cycnoptamica*
- 4 *Ursinia anthemoides*
- 5 *Phyllangium sulcatum*
- 6 *Briza maxima*
- 7 *Podolepis lessonii*
- 8 *Arthropodium dyeri*
- 9 *Trachymene ornata*
- 10 *Trachymene cyanopetala*
- 11 *Ptilotus spathulatus* f. *spathulatus*
- 12 *Goodenia berardiana*
- 13 *Erodium botrys*
- 14 *Anagallis arvensis* var. *caerulea*
- 15 *Hydrocotyle pilifera* var. *glabrata*
- 16 *Chamaescilla corymbosa* var. *corymbosa*
- 17 *Ptilotus spathulatus* f. *spathulatus*
- 18 *Parentucellia latifolia*
- 19 *Erymophyllum tenellum*
- 20 *Hypochaeris glabra*

- 20a *Caesia micrantha*
- 20b *Maireana* sp (? *marginata*)
- 21 *Eucalyptus loxophleba*
- 22 *Acacia acuminata*
- 23 *Trymalium daphinifolium*
- 24 *Melaleuca uncinata*
- 25 *Comesperma integerrimum*
- 26 *Austrostipa elegantissima*
- 27 *Austrodanthonia* sp.
- 28 *Austrostipa trichophylla*
- 29 *Chorizema genistoides*
- 30 *Avena barbata*
- 31 *Vulpia muralis*
- 32 *Trifolium* sp.
- 33a *Stylidium periscelanthum*
- 33b *Dichopogon* sp.
- 33c *Arctotheca calendula*
- 34 *Allocasuarina campestris*
- 35 *Lepidosperma* sp.
- 36 *Neurachne alopecuroidea*
- 37 *Melaleuca adnata*
- 38 *Drosera* sp.
- 39 *Oxalis corniculata*
- 40 *Aristida contorta*
- 41 *Micropterum papulosum*
- 42 *Goodenia* sp.
- 43 *Calotus hispidula*
- 44 *Linum marginale*
- 45 *Bromus rubens*
- 46 *Pentaschistis airoides*

Site: WW-56

No. of Species: 36

Locality: Konnogorring

Vegetation: *Eucalyptus loxophleba* woodland.

- 1 *Eucalyptus loxophleba*
- 2 *Acacia* sp (? *sphacealata*)
- 3 *Baeckea crispiflora*
- 4 *Grevillea paniculata*
- 5 *Allocasuarina huegelii*
- 6 *Hibbertia glomerosa*
- 7 *Aristida contorta*
- 8 *Austrostipa eremophila*
- 9 *Monochather paradoxus*
- 10 *Spartochloa scirpoidea*
- 11 *Lepidosperma costale*
- 12 *Austrodanthonia caespitosa*
- 13 *Thysanotus* sp.
- 14 *Goodenia berardiana*
- 15 *Tripteris clandestina*
- 16 *Vulpia myuros*
- 17 *Pentaschistis airoides*
- 18 *Borya sphaerocephala*
- 19 *Podolepis lessonii*
- 20 *Hyalosperma glutinosum* ssp. *glutinosum*
- 21 *Trachymene cyanopetala*
- 22 *Velleia cynopotamica*
- 23 *Mirbelia ramulosa*
- 24 *Dampiera lavandulacea*

- 25 *Keraudrenia velutina* ssp. *velutina*
- 26 *Austrostipa elegantissima*
- 27 *Acacia assimilis* ssp. *assimilis*
- 28 *Neurachne alopecuroidea*
- 29 *Drosera macrantha*
- 30 *Briza maxima*
- 31 *Arctotheca calendula*
- 32 *Diuris corymbosa*
- 33 *Thysanotus patersonii*
- 34 *Conostylis prolifera*
- 35 *Acacia acuminata*
- 36 *Acacia restiacea*

Site: WW-57 **No. of Species:** 36

Locality: Westonia

Vegetation: *Eucalyptus salubris* woodland.

- 1 *Eucalyptus salubris*
- 2 *Melaleuca pauperiflora* ssp. *fastigiatus*
- 3 *Templetonia* sp.
- 4 *Wilsonia humilis*
- 5 *Austrodanthonia* sp.
- 6 *Bromus rubens*
- 7 *Pentaschistis airoides*
- 8 *Ptilotus holosericeus*
- 9 *Austrostipa elegantissima*
- 10 *Senna artemisioides* ssp. *filifolia*
- 11 *Daviesia nematophylla*
- 12 *Gastrolobium parviflorum*
- 13 *Trymalium daphnifolium*
- 14 *Melaleuca radula*
- 15 *Daucus glochidiatus*
- 16 *Trachymene cyanopetala*
- 17 *Anagallis arvensis* var. *caerulea*
- 18 *Ptilotus spathulatus* f. *spathulatus*
- 19 *Goodenia berardiana*
- 20 *Rhodanthe heterantha*
- 21 *Austrostipa trichophylla*
- 22 *Allocasuarina acutivalvis*
- 23 *Dianella revoluta*
- 24 *Melaleuca lateriflora* ssp. *lateriflora*
- 25 *Olearia muelleri*
- 26 *Acacia densiflora*
- 27 *Acacia hemiteles*
- 28 *Dodonaea inaequifolia*
- 29 *Acacia erinacea*
- 30 *Acacia acuminata*
- 31 *Acacia colletioides*
- 32 *Santalum acuminatum*
- 33 *Enchylaena* sp.
- 35 *Erodium cygnorum*
- 36 *Cassytha melantha*

Site: WW-58 **No. of Species:** 13

Locality: Merredin

Vegetation: *Eucalyptus longicornis/salubris* woodland.

- 1 *Eucalyptus salubris*

- 2 *Eucalyptus* sp.
- 3 *Eucalyptus longicornis*
- 4 *Atriplex acutibractea* ssp. *karoniensis*
- 5 *Melaleuca* sp.
- 6 *Sclerolaena diacantha*
- 7 *Mesembryanthemum nodiflorum*
- 8 *Erymophyllum ramosum*
- 9 *Santalum acuminatum*
- 10 *Ptilotus holosericeus*
- 11 *Waitzia acuminata* var. *acuminata*
- 12 *Angianthus tomentosus*
- 13 *Zygophyllum ovatum*

Site: WW-59

No. of Species: 48

Locality: Wyalkatchem

Vegetation: *Eucalyptus loxophleba* woodland.

- 1 *Eucalyptus loxophleba*
- 2 *Acacia acuminata*
- 3 *Podolepis canescens*
- 4 *Waitzia acuminata*
- 5 *Austrostipa elegantissima*
- 6 *Austrodanthonia* sp
- 7 *Dampiera lavandulacea*
- 8 *Borya sphaerocephala*
- 10 *Lepidosperma costale*
- 11 *Neurachne alopecuroidea*
- 12 *Austrostipa scabra*
- 13 *Ehrharta longiflora*
- 14 *Briza maxima*
- 15 *Prasophyllum gracile*
- 16 *Schoenia cassiniana*
- 17 *Hypochaeris glabra*
- 18a *Arctotheca calendula*
- 18b *Ursinia anthemoides*
- 19 *Ptilotus spathulatus* f *spathulatus*
- 20 *Hyalosperma glutinosum* ssp *glutinosum*
- 21 *Podolepis lessonii*
- 22 *Trachymene cyanopetala*
- 24 *Podolepis capillaris*
- 25 *Austrodanthonia* sp
- 26 *Oxalis corniculata*
- 27 *Daucus glochidiatus*
- 28 *Grevillea paniculata*
- 29 *Dianella revoluta*
- 30 *Goodenia berardiana*
- 31 *Velleia cycnopotamica*
- 32 *Hakea recurva*
- 33 *Aristida contorta*
- 34 *Lomandra effusa*
- 35 *Rhodanthe spicata*
- 36 *Pentaschistis airoides*
- 37 *Ptilotus gaudichaudii*
- 38 *Eremophila* sp
- 39 *Bromus rubens*
- 40 *Rhodanthe polycephala*
- 41 *Trifolium hirtum*
- 42 *Ptilotus obovatus*
- 43 *Austrostipa nitida*

- 44 *Avena barbata*
- 45 *Austrostipa eremophila*
- 46 *Maireana marginata*
- 47 *Acacia acuaria*
- 48 *Calandrinia sp*

Site: WW-60 **No. of Species:** 34

Locality: Konnogorring

Vegetation: *Eucalyptus salubris* woodland.

- 1 *Eucalyptus salubris*
- 2 *Acacia sp.*
- 3 *Rhagodia drummondii*
- 4 *Austrostipa elegantissima*
- 5 *Eucalyptus salmonophloia*
- 6 *Acacia sp.*
- 7 *Eremophila drummondii*
- 8 *Ehrharta longiflora*
- 9 *Sclerolaena diacantha*
- 10 *Bromus rubens*
- 11 *Austrodanthonia acerosa*
- 12 *Waitzia acuminata*
- 13 *Mesembryanthemum nodiflorum*
- 14 *Calandrinia calyptrata*
- 15 *Lolium rigidum*
- 16 *Ptilotus sp.*
- 17 *Trachymene ornata*
- 18 *Grevillea huegelii*
- 19 *Ptilotus divaricatus var. divaricatus*
- 20 *Olearia muelleri*
- 21 *Acacia sp.*
- 22 *Acacia sp.*
- 23 *Trymalium daphnifolium*
- 24 *Acacia acuaria*
- 25 *Santalum acuminatum*
- 26 *Austrodanthonia caespitosa*
- 27 *Lomandra effusa*
- 28 *Lepidosperma aff. costale*
- 29 *Hyalosperma glutinosum ssp. glutinosum*
- 30 *Wilsonia humilis*
- 31 *Brassica sp.*
- 32 *Acacia bidentata*
- 33 *Austrodanthonia caespitosa*
- 34 *Ptilotus spathulatus f spathulatus*

Site: WW-61 **No. of Species:** 36

Locality: Calingiri

Vegetation: *Eucalyptus salmonophloia* woodland.

- 1 *Eucalyptus salmonophloia*
- 2 *Acacia erinacea*
- 3 *Atriplex semibaccata*
- 4 *Austrostipa elegantissima*
- 5 *Austrostipa exilis P2*
- 6 *Austrodanthonia caespitosa*
- 7 *Ehrharta longiflora*
- 8 *Lepidium rotundum*
- 9 *Enchylaena lanata*

- 10 *Lomandra effusa*
- 11 *Ptilotus spathulatus f spathulatus*
- 12 *Maireana enchylaenoides*
- 13 *Maireana brevifolia*
- 14 *Podolepis capillaris*
- 15 *Rhodanthe polycephala*
- 16 *Arctotheca calendula*
- 17 *Hypochaeris glabra*
- 18 *Eucalyptus*
- 19 *Arthropodium ? dyeri*
- 20 *Lolium rigidum*
- 21 *Dampiera lavandulacea*
- 22 *Desmocladius asper*
- 23 *Scaevola spinescens*
- 24 *Ptilotus drummondii*
- 25 *Dianella revoluta*
- 26 *Goodenia convexa*
- 27 *Ursinia anthemoides*
- 28 *Avena barbata*
- 29 *Pentaschistis airoides*
- 30 *Stenanthemum tridentatum P4*
- 31 *Briza maxima*
- 32 *Bromus rubens*
- 34 *Hakea lissocarpha*
- 35 *Trachymene cyanopetala*
- 36 *Pelargonium havalasae*

Site: WW-62

No. of Species: 7

Locality: Calingiri

Vegetation: *Eucalyptus loxophleba* woodland.

- 1 *Eucalyptus loxophleba*
- 2 *Acacia acuminata*
- 3 *Dichopogon capillipes*
- 4 *Austrodanthonia caespitosa*
- 5 *Austrostipa elegantissima*
- 6 *Arthropodium dyeri*
- 7 *Avena barbata*