



# Woodland Watch 2003 Survey of Wheatbelt Woodlands

**Western Australian Herbarium**

# Contents

Introduction	3
Methodology	4
Results	5
Collections of Note	6
Rare and Priority Listed Taxa	6
Other Notable Collections	7
Notes on the Species Lists	9
Conclusion	10
Acknowledgements	11
References	11
Map of Survey Sites	12
Species Lists	13

# Introduction

Woodland Watch is a woodlands conservation project launched in 2000 by WWF-Australia, in collaboration with the Herbarium of the Department of Conservation and Land Management, and with the assistance of funding from the Natural Heritage Trust and Alcoa Australia. One of the major objectives of the project was to carry out floristic surveys of selected remnant eucalypt woodlands of the Avon Wheatbelt region – on private farmlands and other lands not within the conservation estate. The Avon Wheatbelt bioregion is situated in the South West Botanical Province of Western Australia, which roughly corresponds to one of WWF's Global 200 priority ecoregions - the Southwest Australia Ecoregion. It is bound by Jarrah forest in the southwest, and the Eremaean Botanical Province –the Murchison and goldfields districts, to the northeast. It encompasses an area of 93,520 square kms, of which 93% has been cleared – predominantly for agriculture (Beard 1990).

Four woodland types considered by WWF-Australia to be amongst the most threatened eucalypt woodland communities of the Avon Wheatbelt region were selected for the research and conservation project: those dominated by salmon gum (*Eucalyptus salmonophloia*), gimlet (*E. salubris*), York gum (*E. loxophleba*) and red morrel (*E. longicornis*).

The primary aims of the project were to identify woodlands of high conservation value in the Avon Wheatbelt, to assist private landowners and rural communities to better manage and conserve these remnant woodlands, and to help landholders to better understand the major threats to these woodlands and their management needs. These include consideration of such impacts as soil compaction, and over-clearing and grazing, which have contributed to the secondary and more important problems of salinity and rising water tables.

Conducting flora surveys in these woodland communities was considered an essential preliminary activity, to highlight their uniqueness and diversity, and to assess and report on their condition. Using this and other information, property owners could then be advised on how best to manage and protect their remnant vegetation through fencing and other management practices, and conservation support schemes such as covenants. Thus, through Woodland Watch, it is possible to address some of the threats to the woodlands, including salinity. Future monitoring of the sites may provide data on the ability and rate at which these eucalypt woodlands can recover from disturbance.

The role of the WA Herbarium in this project was to survey, identify and voucher all plant specimens collected from selected woodland sites. In the first year (2000) 41 sites were surveyed over a 10-week period. The following year (2001) another 21 sites were surveyed, bringing the total of sites surveyed to 62 and the total number of vouchered specimens collected to approximately 2400. In 2002, a further 25 sites were surveyed and 647 voucher specimens were collected, making a total of 87 sites and 3,047 specimens. In 2003, a further 25 sites were surveyed and 1095 voucher specimens collected, bringing the total number of sites to 112 and the total number of specimens collected to 4169.

# Methodology

In 2003, the fourth year of surveys, all sites were surveyed and plants vouchered by Mike Hislop of the WA Herbarium, in collaboration with Mick Davis and Mike Griffiths of WWF-Australia. As with the 2000, 2001 and 2002 surveys, the methodology for each site visited in 2003 comprised three parts:

## Ten by ten metre quadrats

The location of each 10 × 10 metre quadrat was based on the area that best represented the species diversity of the selected woodland type. All species found were collected. Each quadrat was permanently marked by a steel stake on the northwestern corner from which the coordinates were recorded using a GPS.

## Random stratified collection

This involved a random walk covering the confines of the selected woodland, avoiding adjoining habitats to keep the integrity of survey purely to the targeted *Eucalyptus* woodland habitat.

## Overall assessment

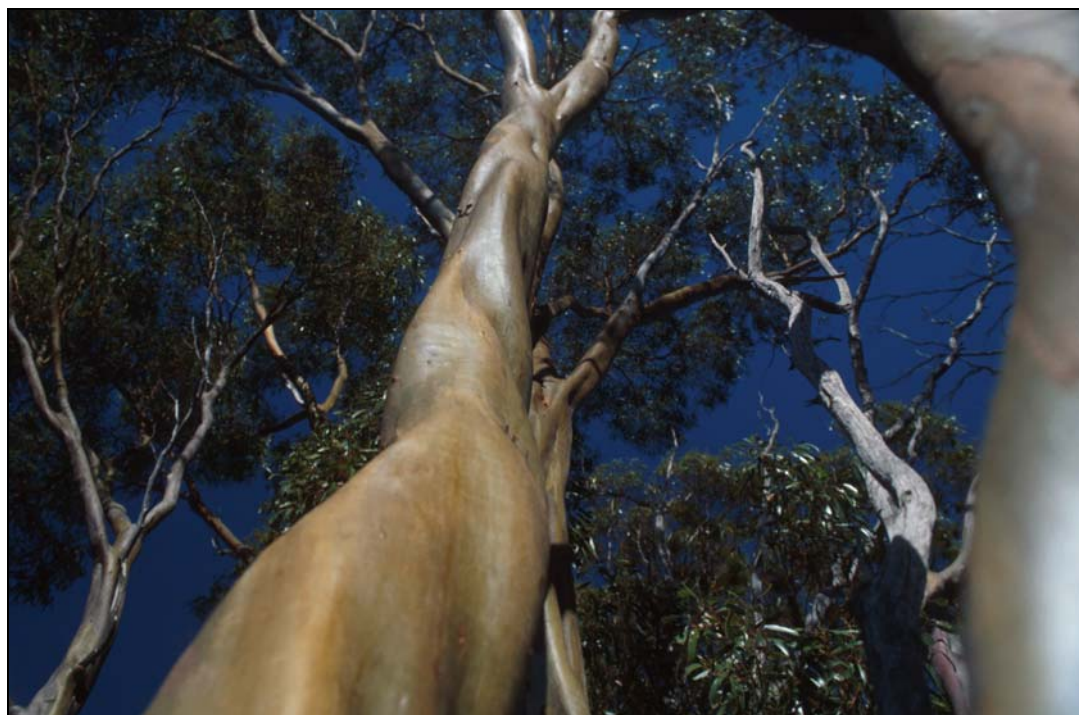
An overall assessment of the condition of each site was made using procedures adopted by the Wildflower Society of Western Australia (Trudgen 1991). This methodology was considered the most effective to achieve the objectives of the project within the time constraints.

## Results

A total of 25 new sites were surveyed in 2003, resulting in 1095 collections. Of the 25 woodland sites surveyed, 4 were *Eucalyptus salmonophloia*, 5 were *Eucalyptus salubris*, 10 were *Eucalyptus loxophleba*, and 2 were *Eucalyptus longicornis*. The remaining sites were predominantly of other woodland types: 1 *Eucalyptus sheathiana/semivestita*, 1 *Eucalyptus sheathiana/subangusta*, 1 *Eucalyptus capillosa*, and 1 *Eucalyptus astringens*. These selected woodlands varied greatly in size from 10 hectares to several hundred hectares; they also varied in condition.

The number of species recorded at each of the sites varied considerably – from 22 (at the *Eucalyptus sheathiana/semivestita* site – WW-88) to 60 (at one of sites with *Eucalyptus loxophleba* as the dominant species – WW-94 near Nungarin). Other *Eucalyptus loxophleba* sites with relatively high numbers of species included: WW-103 (59 species), WW-105 (56, and WW-109 (59). Another mixed *Eucalyptus loxophleba/salubris* site (WW-107) recorded 57 species. Two of the sites dominated by *Eucalyptus salmonophloia* also recorded a high number of species: WW-99 (54 species) and WW-104 (59).

From the 10 *Eucalyptus loxophleba* woodland sites surveyed, a total of 509 specimens were vouchered at an average of 51 species per site. From the 5 *Eucalyptus salubris* woodland sites surveyed, 209 species were collected at an average of 42 species per site. From the 4 *Eucalyptus salmonophloia* woodland sites surveyed, 174 species were collected at an average of 43 species per site. From the 2 *Eucalyptus longicornis* woodland sites surveyed, 73 species were collected at an average of 36 species per site.



Woodland Watch site 12 [Photo: Richard McLellan/WWF-Australia]

## Collections of note

Whilst the majority of gatherings made during the 2003 survey provided small range extensions, a number were more significant. Some of these, including several possible new species, new locations of Priority taxa, and more notable range extensions, are highlighted below.

### Rare and Priority listed taxa

- ***Hyalosperma stoveae***. (WW-89). Priority 2 taxon. This specimen represents only the third West Australian collection of this tiny daisy. It is also known to occur in South Australia and Victoria where it is probably also uncommon or at least sparsely distributed to judge by the paucity of collections from those states.
- ***Thysanotus tenuis***. (WW-90, WW-93, WW-94). Priority 3 taxon. A small fringe lily apparently restricted to the central and northern portion of the southern Wheatbelt. The ongoing site surveys associated with the Woodland Watch program however have extended its known range to the north and do suggest that it may be more common and widespread than had previously been realised. Apart from the three collections above it was also collected twice in the 2002 surveys.
- ***Gunniopsis rubra***. (WW-92, WW-108) Priority 3 taxon. A small, prostrate annual confined to the north and central Wheatbelt.
- ***Blennospora phlegmatocarpa***. (WW-93) Priority 3 taxon. An annual daisy more or less confined to the Wheatbelt of West Australia where it mostly occurs close to areas of primary salinity.
- ***Phlegmatosperma drummondii***. (WW-94, WW-99) Priority 3 taxon. This small, annual crucifer was for a number of years considered extinct before ongoing studies within the genus revealed that there were in fact a few relatively recent collections of the species at the WA Herbarium that had been erroneously labeled. It was then added to the list of Declared Rare Flora before being further reduced to Priority status. Nevertheless it still appears to be an uncommon species with few, scattered collections, mostly from the Wheatbelt.
- ***Stylidium merrallii***. (WW-97). Declared Rare Flora. This showy trigger plant is another that had been considered extinct until its rediscovery in the early 1990s. The few populations known mostly occur at or beyond the eastern edge of the Wheatbelt and this collection certainly represents a westerly range extension for the species.
- ***Eremophila resinosa***. (WW-99). Declared Rare Flora. As with a number of other uncommon eremophilas, this species probably always had a restricted distribution. It is currently only known from a few populations in the Westonia and Koorda districts. Although only a single plant was seen at site 99, it was not recognized as a DRF at the time of collection, and it seems reasonable to

assume that an organized search would be likely to reveal other plants in the area.

## **Other notable collections**

- ***Phebalium aff brachycalyx***. (WW-89). This collection does not well match any of the currently recognized taxa within the genus *Phebalium*. Because this entity was locally common in the area, Paul Wilson (a taxonomic authority on the family *Rutaceae* who is based at the WA Herbarium) believes that it may represent either a stabilized hybrid or an unnamed taxon.
- ***Menkea australis***. (WW-90, WW-94, WW-96, WW-98). Although long recognized as being a widespread species, before the Woodland Watch flora surveys there had only been two collections of this small annual from the entire Wheatbelt. It might reasonably have been assumed therefore from a scan of a statewide distribution map for that species that it was probably absent from much of that area. The fact that it was recorded from four WW sites in the central Wheatbelt however suggests that its apparent absence is quite likely to be a function of the inconspicuous habit of this species rather than any significant discontinuities in its distribution in the drier parts of southern Western Australia. The case of this small annual crucifer provides a very good example of how the careful survey methods employed by Woodland Watch are literally filling in the gaps in our knowledge of the floristics of the Wheatbelt's woodland communities.
- ***Cheilanthes adiantoides***. (WW-94). This rarely collected fern is only known from a few areas in the northern and central Wheatbelt and should probably be included on the Priority list.
- ***Chenopodium cristatus***. (WW-100). Only three previous collections of this small, aromatic herb from agricultural areas of the state – it mostly occurs in pastoral country to the north and east.
- ***Vittadinia humerata***. (WW-100). Another species that is known from only a very few localities within the Wheatbelt, although it also has an apparently sparse distribution to the north and east.
- ***Euchiton sphaericus***. (WW-101). A small daisy with a mostly coastal distribution. This collection represents one of its most inland occurrences.
- ***Microcybe albiflora***. (WW-102). Another member of the large family *Rutaceae*, this specimen is the most northerly record for the species and is also rather atypical in several regards. It needs critical evaluation to determine whether it should just be regarded as a variant of *M. albiflora* or whether it is sufficiently distinct to warrant taxonomic recognition at some level.
- ***Lepidosperma sp.*** (WW103). The complex sedge genus *Lepidosperma* is greatly in need of taxonomic revision and undoubtedly includes numerous unnamed taxa. This specimen doesn't well fit into any of the published names currently recognized at the WA Herbarium and is probably among those unnamed taxa.

- ***Calandrinia aff eremaea***. (WW-92, WW-93, WW-94, WW-98, WW-99, WW-100). As with *Lepidosperma* above, the genus *Calandrinia* is another that is much in need of revision. The entity referred to here as *C. aff eremaea* has often been identified either as *C. eremaea* or *C. polyandra* but appears to be sufficiently distinct from both of these (in the sense that we currently understand the circumscription of these two species), especially in the important character of seed coat morphology, to be considered a separate taxon.
- ***Phaeoceros sp.*** (WW-106). This hornwort specimen was collected opportunistically at site 106 and forwarded to a specialist Christine Cargill in Canberra. She has not been able yet to determine the specimen to species level and still considers it quite likely to be an unnamed taxon.
- ***Lachnagrostis sp.*** (WW-110). Another specimen that is not readily placed within the existing taxonomic framework for the genus. It could represent an anomalous variant of *L. plebeia* or a new taxon.
- ***Stylidium aff hortiorum***. (M. Hislop & M. Griffiths MH 3016). This triggerplant was collected opportunistically close to site 110 but in a different vegetation type. *Stylidium* authority Juliet Wege has examined the specimen and believes that it is an undescribed taxon closest to *S. hortiorum*.
- ***Drosera spilos***. (WW-112). A small white flowered pygmy sundew, this collection represents a south easterly range extension for the species.

Two weed specimens collected during the surveys are also of some interest:

- ***Cerastium comatum***. (WW-112). This is the first collection made in West Australia of *Cerastium comatum*, one of the chickweeds. Although no new weeds are ever welcome in the State this small annual is very unlikely to constitute a significant threat either as an agricultural or environmental weed.
- ***Plantago cretica***. (WW-106). This *Plantago cretica* is a perennial weed that appears to be confined within Australia to paddocks in the Toodyay district. It was first collected there by Charles Gardner in 1955.



# Notes on the presentation of the species lists for the sites studied

- All specimen collections are databased and incorporated into the WA Herbarium (PERTH)
- Specimens are updated according to current taxonomy so that up-to-date names are available for each specimen
- In the following tables collections are generally arranged numerically by collecting number within each site (the collectors' names and site numbers appear in the right hand column) and starting with those species found inside the survey quadrat. The latter are separated from those found outside the quadrat, although still within the same vegetation type, by a blank row on each site list. Very occasionally, after the initial search, further species were recorded within the quadrat. In such cases these collections will still appear above the blank row but because they were collected slightly later they will not be in numerical order.
- The second column indicates the unique PERTH barcode number for each specimen.
- Weed species are indicated in the third column by the combination Alien. If this column is blank then the taxon is considered native.
- The format used above cannot separate manuscript or unpublished names from published names. A manuscript name is assigned by a botanist who is actively studying the particular genus or species. These names are included in FloraBase
- A number of informal or phrase names also appear on these lists e.g. *Pterostylis* sp. inland (A.C. Beaglehole 11880). These are interim names, used by PERTH to refer to taxa that have been recognised as probably distinct, until they can be formally studied and formal names published. These names are included in FloraBase

# Conclusion

The woodlands surveyed in 2003 were found to be largely comprised of species in the following plant families (in alphabetical order) — Asteraceae, Chenopodiaceae, Mimosaceae, Papilionaceae and Poaceae.

Although dominated by eucalypts, there are relatively few species of Myrtaceae within these woodlands, except for the genus *Melaleuca*. Even though melaleucas were relatively common, as in the 2001 surveys, they were frequently located either on the periphery of these woodlands or in small pockets within, often near granite or by watercourses and in wet depressions.

As with sites surveyed in previous years, Proteaceae was also poorly represented in these woodland types.



Red Morrel woodland [Photo: Richard McLellan/WWF-Australia]

# Acknowledgments

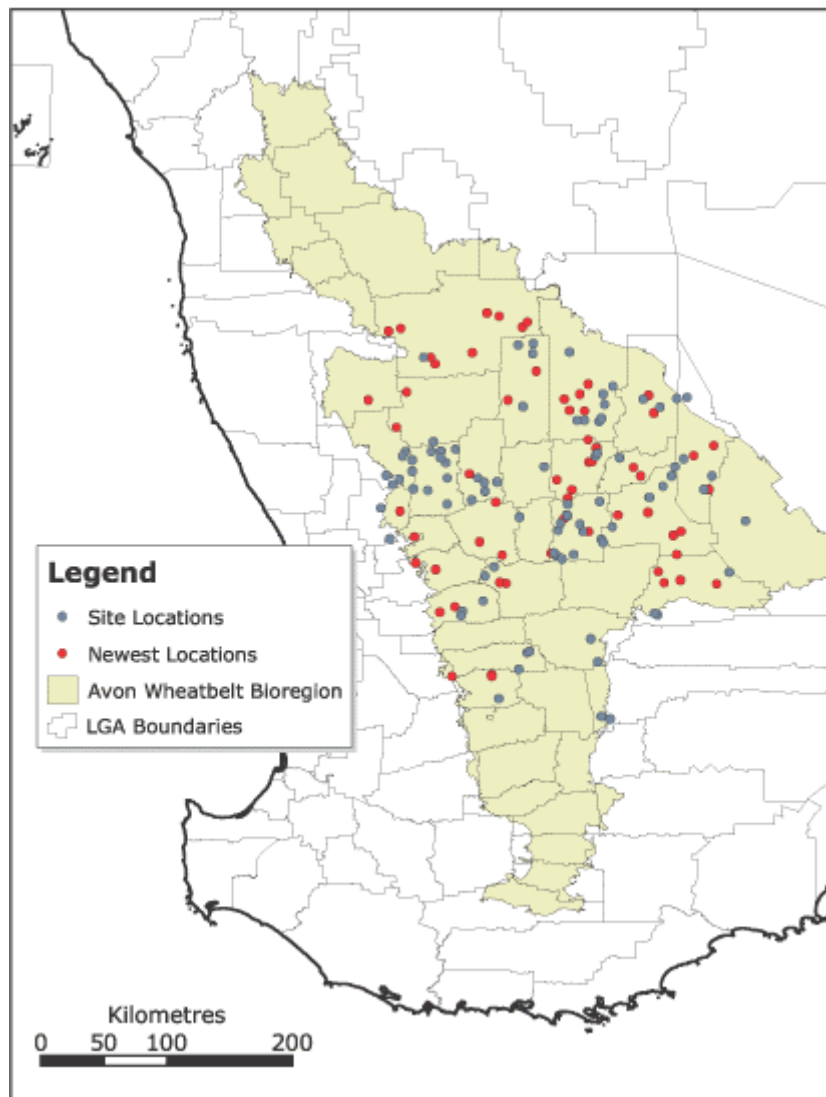
This document draws on information collected and provided by Mike Hislop, and was compiled and edited by Nicholas Lander and Richard McLellan. Document design follows that devised by Alex Chapman for earlier reports in this series. The map was prepared by Paul Gioia and the accompanying web site by Ben Richardson (see **References**). Photographs by Richard McLellan/WWF-Australia.

Special thanks are given to Andrew Brown, Malcolm French, Bruce Maslin, and Paul Wilson for their expert taxonomic advice. The WA Herbarium Database Team (supervisor Sue Carroll) provided much technical assistance.

# References

- Beard, J.S. (1990). *Plant Life of Western Australia*. Kangaroo Press, Kenthurst.
- Maslin, B.R. (2001). WATTLE — *Acacias of Australia* CD-ROM and manual. Australian Biological Resources Study / Dept of Conservation & Land Management, WA.
- Trudgen, M.E. (1991) Vegetation Condition Scale. Modified by B.J. Keighery in Keighery, B.J. (1994) *Bush Land Plant Survey; a Guide to Plant Community Survey for the Community*. Wildflower Society of Western Australia (Inc) Nedlands, W.A 6009.
- Western Australian Herbarium (1998). *FloraBase — Information on the Western Australian flora*. Department of Conservation and Land Management.  
<http://www.calm.wa.gov.au/science/florabase.html>
- Western Australian Herbarium (2002). *FloraBase — Woodland Watch*. Department of Conservation and Land Management. <http://florabase.calm.wa.gov.au/special/wwatch/>
- Western Australian Herbarium (2002). *Woodland Watch — 2000 and 2001 Survey of Wheatbelt Woodlands*. Department of Conservation and Land Management. Unpublished Report.
- WWF-Australia website (2002). *South West Ecoregion Program — Woodland Watch*  
<http://www.wwf.org.au/content/woodlandwatch.htm>

# Map of Survey Sites



# Site Species Lists

For a current listing of all Woodland Watch survey sites, please refer to the Western Australian Herbarium's *FloraBase - Woodland Watch* web site at <http://florabase.calm.wa.gov.au/special/wwatch/>

# Site Species Lists 2003

**Site:** WW-88

**No. of Species:** 22

**Locality:** Koorda

**Vegetation:** *Eucalyptus semivestita* woodland.

<i>Eucalyptus sheathiana</i> Maiden	SHEET NO. 06578063	M. Hislop & M. Davis WW 88.1
<i>Eucalyptus semivestita</i> (L.A.S.Johnson & K.D.Hill)Nicolle	SHEET NO. 06578071	M. Hislop & M. Davis WW 88.2
<i>Acacia acuaria</i> W.Fitzg.	SHEET NO. 06578098	M. Hislop & M. Davis WW 88.3
<i>Olearia muelleri</i> (Sond.)Benth.	SHEET NO. 06578101	M. Hislop & M. Davis WW 88.4
<i>Dodonaea bursariifolia</i> F.Muell.	SHEET NO. 06578128	M. Hislop & M. Davis WW 88.5
<i>Grevillea huegelii</i> Meisn.	SHEET NO. 06578454	M. Hislop & M. Davis WW 88.6
<i>Daviesia nematophylla</i> Benth.	SHEET NO. 06578462	M. Hislop & M. Davis WW 88.7
<i>Acacia mackeyana</i> Ewart & Jean White	SHEET NO. 06578470	M. Hislop & M. Davis WW 88.8
<i>Eremophila drummondii</i> F.Muell.	SHEET NO. 06675298	M. Hislop & M. Davis WW 88.9
<i>Melaleuca scalena</i> Craven & Lepschi	SHEET NO. 06675301	M. Hislop & M. Davis WW 88.10
<i>Sclerolaena diacantha</i> (Nees)Benth.	SHEET NO. 06675328	M. Hislop & M. Davis WW 88.11
<i>Waitzia acuminata</i> Steetz var. <i>acuminata</i>	SHEET NO. 06675336	M. Hislop & M. Davis WW 88.12
<i>Velleia cynopotamica</i> F.Muell.	SHEET NO. 06675344	M. Hislop & M. Davis WW 88.13
<i>Thysanotus patersonii</i> R.Br.	SHEET NO. 06675417	M. Hislop & M. Davis WW 88.20
<i>Acacia hemiteles</i> Benth.	SHEET NO. 06675352	M. Hislop & M. Davis WW 88.14
<i>Acacia brumalis</i> Maslin	SHEET NO. 06675360	M. Hislop & M. Davis WW 88.15
<i>Melaleuca coroncarpa</i> D.A.Herb.	SHEET NO. 06675379	M. Hislop & M. Davis WW 88.16
<i>Westringia cephalantha</i> F.Muell.	SHEET NO. 06675387	M. Hislop & M. Davis WW 88.17
<i>Maireana carnosa</i> (Moq.)Paul G.Wilson	SHEET NO. 06675395	M. Hislop & M. Davis WW 88.18
<i>Podolepis tepperi</i> (F.Muell.)D.A.Cooke	SHEET NO. 06675409	M. Hislop & M. Davis WW 88.19
<i>Melaleuca lateriflora</i> Benth. subsp. <i>lateriflora</i>	SHEET NO. 06675425	M. Hislop & M. Davis WW 88.21
<i>Actinobole uliginosum</i> (A.Gray)H.Eichler	SHEET NO. 06675433	M. Hislop & M. Davis WW 88.22

**Site:** WW-89

**No. of Species:** 30

**Locality:** Koorda

**Vegetation:** *Eucalyptus semivestita* woodland.

<i>Eucalyptus semivestita</i> (L.A.S.Johnson & K.D.Hill)Nicolle	SHEET NO. 06577733	M. Hislop & M. Davis WW 89.1
<i>Eucalyptus subangusta</i> (Blakely)Brooker & Hopper subsp. <i>subangusta</i>	SHEET NO. 06577741	M. Hislop & M. Davis WW 89.2
<i>Baeckea megaflora</i> Trudgen	SHEET NO. 06577768	M. Hislop & M. Davis WW 89.3
<i>Phebalium</i> aff. <i>brachycalyx</i>	SHEET NO. 06577776	M. Hislop & M. Davis WW 89.4
<i>Beyeria brevifolia</i> var. <i>robustior</i> Airy Shaw	SHEET NO. 06577784	M. Hislop & M. Davis WW 89.5
<i>Phebalium tuberculosum</i> (F.Muell.)Benth.	SHEET NO. 06577792	M. Hislop & M. Davis WW 89.6
<i>Westringia cephalantha</i> F.Muell.	SHEET NO. 06577806	M. Hislop & M. Davis WW 89.7
<i>Platysace trachymenioides</i> F.Muell.	SHEET NO. 06577814	M. Hislop & M. Davis WW 89.9
<i>Melaleuca scalena</i> Craven & Lepschi	SHEET NO. 06577822	M. Hislop & M. Davis WW 89.10
<i>Melaleuca atroviridis</i> Craven & Lepschi	SHEET NO. 06577830	M. Hislop & M. Davis WW 89.11
<i>Hibbertia eatoniae</i> Diels	SHEET NO. 06577849	M. Hislop & M. Davis WW 89.12
<i>Melaleuca cordata</i> Turcz.	SHEET NO. 06577857	M. Hislop & M. Davis WW 89.13
<i>Grevillea paradoxa</i> F.Muell.	SHEET NO. 06577865	M. Hislop & M. Davis WW 89.14
<i>Melaleuca ctenoides</i> Quinn	SHEET NO. 06577873	M. Hislop & M. Davis WW 89.15
<i>Drosera macrantha</i> Endl.	SHEET NO. 06577881	M. Hislop & M. Davis WW 89.16
<i>Melaleuca conothamnoides</i> C.A.Gardner	SHEET NO. 06577903	M. Hislop & M. Davis WW 89.17
<i>Acacia stereophylla</i> Meisn. var. <i>stereophylla</i>	SHEET NO. 06577911	M. Hislop & M. Davis WW 89.18
<i>Acacia hemiteles</i> Benth.	SHEET NO. 06577938	M. Hislop & M. Davis WW 89.19
<i>Acacia longispinea</i> Morrison	SHEET NO. 06577946	M. Hislop & M. Davis WW 89.20
<i>Poranthera microphylla</i> Brongn.	SHEET NO. 06577954	M. Hislop & M. Davis WW 89.21

Schoenus nanus (Nees)Benth.	SHEET NO. 06577962	M. Hislop & M. Davis WW 89.22
Trachymene cyanopetala (F.Muell.)Benth.	SHEET NO. 06577970	M. Hislop & M. Davis WW 89.23
Calotis hispidula (F.Muell.)F.Muell.	SHEET NO. 06577989	M. Hislop & M. Davis WW 89.24
Millotia tenuifolia Cass. var. tenuifolia	SHEET NO. 06577997	M. Hislop & M. Davis WW 89.25
Arctotheca calendula (L.)Levyns	SHEET NO. 06578004	Alien M. Hislop & M. Davis WW 89.26
Blennospora drummondii A.Gray	SHEET NO. 06578012	M. Hislop & M. Davis WW 89.27
Levenhookia pusilla R.Br.	SHEET NO. 06578020	M. Hislop & M. Davis WW 89.28
Wahlenbergia gracilentia Lothian	SHEET NO. 06578039	M. Hislop & M. Davis WW 89.29
Hyalosperma stoveae (D.A.Cooke)Paul G.Wilson	SHEET NO. 06578047	M. Hislop & M. Davis WW 89.30
Crassula coloratavar. acuminata (Reader)Toelken	SHEET NO. 06578055	M. Hislop & M. Davis WW 89.31

**Site:** WW-90      **No. of Species:** 43

**Locality:** North Gabbin

**Vegetation:** *Eucalyptus salmonophloia* / *E. salubris* woodland.

Acacia mackeyana Ewart & Jean White	SHEET NO. 06685366	M. Hislop & M. Davis WW 90.01
Eucalyptus salmonophloia F.Muell.	SHEET NO. 06685447	M. Hislop & M. Davis WW 90.1
Eucalyptus salubris F.Muell.	SHEET NO. 06685439	M. Hislop & M. Davis WW 90.2
Eremophila oppositifolia subsp. angustifolia (S.Moore)Chinnock	SHEET NO. 06685803	M. Hislop & M. Davis WW 90.3
Olearia muelleri (Sond.)Benth.	SHEET NO. 06685838	M. Hislop & M. Davis WW 90.4
Acacia acuaria W.Fitzg.	SHEET NO. 06685390	M. Hislop & M. Davis WW 90.5
Grevillea acuaria Benth.	SHEET NO. 06685811	M. Hislop & M. Davis WW 90.6
Acacia erinacea Benth.	SHEET NO. 06685528	M. Hislop & M. Davis WW 90.7
Daviesia nematophylla Benth.	SHEET NO. 06685382	M. Hislop & M. Davis WW 90.8
Alyxia buxifolia R.Br.	SHEET NO. 06685781	M. Hislop & M. Davis WW 90.10
Podotheca gnaphalioides Graham	SHEET NO. 06685706	M. Hislop & M. Davis WW 90.11
Calotis hispidula (F.Muell.)F.Muell.	SHEET NO. 06685714	M. Hislop & M. Davis WW 90.12
Waitzia acuminata Steetz var. acuminata	SHEET NO. 06685765	M. Hislop & M. Davis WW 90.13
Trachymene cyanopetala (F.Muell.)Benth.	SHEET NO. 06685684	M. Hislop & M. Davis WW 90.14
Thysanotus tenuis Lindl.	SHEET NO. 06685560	M. Hislop & M. Davis WW 90.15
Elymus scaber (R.Br.)A.Love	SHEET NO. 06685722	M. Hislop & M. Davis WW 90.16
Podolepis tepperi (F.Muell.)D.A.Cooke	SHEET NO. 06685463	M. Hislop & M. Davis WW 90.17
Arctotheca calendula (L.)Levyns	SHEET NO. 06685471	Alien M. Hislop & M. Davis WW 90.18
Plantago debilis R.Br.	SHEET NO. 06685544	M. Hislop & M. Davis WW 90.19
Rhodanthe laevis (A.Gray)Paul G.Wilson	SHEET NO. 06685773	M. Hislop & M. Davis WW 90.20
Actinobole uliginosum (A.Gray)H.Eichler	SHEET NO. 06685749	M. Hislop & M. Davis WW 90.21
Erymophyllum tenellum (Turcz.)Paul G.Wilson	SHEET NO. 06685625	M. Hislop & M. Davis WW 90.22
Calandrinia calyprata Hook.f.	SHEET NO. 06685609	M. Hislop & M. Davis WW 90.23
Calandrinia eremaea Ewart	SHEET NO. 06685617	M. Hislop & M. Davis WW 90.23 A
Phyllangium sulcatum Dunlop	SHEET NO. 06685498	M. Hislop & M. Davis WW 90.24
Crassula colorata (Nees)Ostenf.	SHEET NO. 06685579	M. Hislop & M. Davis WW 90.25
Wahlenbergia gracilentia Lothian	SHEET NO. 06685633	M. Hislop & M. Davis WW 90.26
Senecio glossanthus (Sond.)Belcher	SHEET NO. 06685455	M. Hislop & M. Davis WW 90.27
Calandrinia granulifera Benth.	SHEET NO. 06685641	M. Hislop & M. Davis WW 90.28
Hypoxis glabella R.Br. var. glabella	SHEET NO. 06685676	M. Hislop & M. Davis WW 90.29
Cleretum papulosum (L.f.)L.Bolus	SHEET NO. 06685668	Alien M. Hislop & M. Davis WW 90.30
Pentaschistis airoides (Nees)Stapf	SHEET NO. 06685757	Alien M. Hislop & M. Davis WW 90.31
Enchylaena lanata Paul G.Wilson	SHEET NO. 06685692	M. Hislop & M. Davis WW 90.32
Rhagodia drummondii Moq.	SHEET NO. 06685501	M. Hislop & M. Davis WW 90.33
Acacia merrallii F.Muell.	SHEET NO. 06685420	M. Hislop & M. Davis WW 90.33
Eucalyptus celastroides subsp. virella Brooker	SHEET NO. 06685552	M. Hislop & M. Davis WW 90.34
Menkea australis Lehm.	SHEET NO. 06685730	M. Hislop & M. Davis WW 90.35
Bulbine semibarbata (R.Br.)Haw.	SHEET NO. 06685587	M. Hislop & M. Davis WW 90.36

Acacia hemiteles Benth.	SHEET NO. 06685404	M. Hislop & M. Davis WW 90.37
Exocarpos aphyllus R.Br.	SHEET NO. 06685412	M. Hislop & M. Davis WW 90.39
Melaleuca pauperiflora subsp. fastigiata Barlow	SHEET NO. 06685374	M. Hislop & M. Davis WW 90.40
Sclerolaena diacantha (Nees)Benth.	SHEET NO. 06685536	M. Hislop & M. Davis WW 90.41
Goodenia berardiana (Gaudich.)Carolin	SHEET NO. 06685595	M. Hislop & M. Davis WW 90.42

**Site:** WW-91      **No. of Species:** 41

**Locality:** Koorda

**Vegetation:** *Eucalyptus salicola* woodland.

Eucalyptus loxophleba subsp. supralaevis L.A.S.Johnson & K.D.Hill	SHEET NO. 06574904	M. Hislop & M. Davis WW 91.1
Eucalyptus salicola Brooker	SHEET NO. 06574815	M. Hislop & M. Davis WW 91.2
Eremophila drummondii F.Muell.	SHEET NO. 06574963	M. Hislop & M. Davis WW 91.3
Olearia dampieri subsp. eremicola (Diels)Lander	SHEET NO. 06574971	M. Hislop & M. Davis WW 91.4
Ptilotus eriostichus (Ewart & J.White)P.S.Short	SHEET NO. 06574807	M. Hislop & M. Davis WW 91.5
Olearia muelleri (Sond.)Benth.	SHEET NO. 06575013	M. Hislop & M. Davis WW 91.6
Sclerolaena diacantha (Nees)Benth.	SHEET NO. 06574955	M. Hislop & M. Davis WW 91.7
Ptilotus exaltatus Nees	SHEET NO. 06575021	M. Hislop & M. Davis WW 91.8
Dianella revoluta R.Br.	SHEET NO. 06574890	M. Hislop & M. Davis WW 91.9
Exocarpos aphyllus R.Br.	SHEET NO. 06574874	M. Hislop & M. Davis WW 91.10
Ptilotus gaudichaudii (Steud.)J.M.Black	SHEET NO. 06575005	M. Hislop & M. Davis WW 91.11
Stenopetalum filifolium Benth.	SHEET NO. 06575064	M. Hislop & M. Davis WW 91.12
Brassica tournefortii Gouan	SHEET NO. 06575080	Alien M. Hislop & M. Davis WW 91.13
Atriplex sp.	SHEET NO. 06574831	M. Hislop & M. Davis WW 91.14
Rhagodia drummondii Moq.	SHEET NO. 06575072	M. Hislop & M. Davis WW 91.15
Maireana diffusa Paul G.Wilson	SHEET NO. 06574866	M. Hislop & M. Davis WW 91.16
Tripteris clandestina Less.	SHEET NO. 06575099	Alien M. Hislop & M. Davis WW 91.17
Austrostipa nitida (Summerh.& C.E.Hubb.)S.W.L.Jacobs & J.Everett	SHEET NO. 06574823	M. Hislop & M. Davis WW 91.18
Trachymene cyanopetala (F.Muell.)Benth.	SHEET NO. 06575129	M. Hislop & M. Davis WW 91.19
Podotheca gnaphalioides Graham	SHEET NO. 06575137	M. Hislop & M. Davis WW 91.20
Arctotheca calendula (L.)Levyns	SHEET NO. 06575145	Alien M. Hislop & M. Davis WW 91.21
Schoenia filifolia (Turcz.)Paul G.Wilson subsp. filifolia	SHEET NO. 06574858	M. Hislop & M. Davis WW 91.22
Calotis hispidula (F.Muell.)F.Muell.	SHEET NO. 06575161	M. Hislop & M. Davis WW 91.23
Lepidium rotundum (Desv.)DC.	SHEET NO. 06575056	M. Hislop & M. Davis WW 91.24
Actinobole uliginosum (A.Gray)H.Eichler	SHEET NO. 06575153	M. Hislop & M. Davis WW 91.25
Pentaschistis airoides (Nees)Stapf	SHEET NO. 06575188	Alien M. Hislop & M. Davis WW 91.26
Erodium cygnorum Nees subsp. cygnorum	SHEET NO. 06575196	M. Hislop & M. Davis WW 91.27
Senecio glossanthus (Sond.)Belcher	SHEET NO. 06575218	M. Hislop & M. Davis WW 91.28
Goodenia berardiana (Gaudich.)Carolin	SHEET NO. 06576281	M. Hislop & M. Davis WW 91.29
Crassula colorata var. acuminata (Reader)Toelken	SHEET NO. 06575226	M. Hislop & M. Davis WW 91.30
Brachyscome ciliaris (Labill.)Less.	SHEET NO. 06576273	M. Hislop & M. Davis WW 91.31
Calandrinia eremaea Ewart	SHEET NO. 06575234	M. Hislop & M. Davis WW 91.32
Senecio lautus Willd.	SHEET NO. 06575110	M. Hislop & M. Davis WW 91.33
Austrostipa flavescens (Labill.)S.W.L.Jacobs & J.Everett	SHEET NO. 06574793	M. Hislop & M. Davis WW 91.34
Rhodanthe chlorocephala subsp. rosea (Hook.)Paul G.Wilson	SHEET NO. 06575048	M. Hislop & M. Davis WW 91.35
Aristida contorta F.Muell.	SHEET NO. 06575242	M. Hislop & M. Davis WW 91.36
Maireana georgei (Diels)Paul G.Wilson	SHEET NO. 06574785	M. Hislop & M. Davis WW 91.37
Zygophyllum eremaeum (Diels)Ostenf.	SHEET NO. 06574947	M. Hislop & M. Davis WW 91.38
Pimelea microcephala R.Br. subsp. microcephala	SHEET NO. 06574998	M. Hislop & M. Davis WW 91.39



Dodonaea viscosa subsp. angustissima (DC.)J.G.West	SHEET NO. 06574882		M. Hislop & M. Davis WW 91.40
Spergula pentandra L.	SHEET NO. 06575102	Alien	M. Hislop & M. Davis WW 91.41

**Site:** WW-92      **No. of Species:** 37

**Locality:** Bencubbin

**Vegetation:** *Eucalyptus salubris* woodland.

Eucalyptus salubris F.Muell.	SHEET NO. 06676758		M. Hislop & M. Davis WW 92.1
Eucalyptus semivestita (L.A.S.Johnson & K.D.Hill)Nicolle	SHEET NO. 06676766		M. Hislop & M. Davis WW 92.2
Eremophila papillata Chinnock	SHEET NO. 06676774		M. Hislop & M. Davis WW 92.3
Acacia merrallii F.Muell.	SHEET NO. 06676782		M. Hislop & M. Davis WW 92.4
Maireana trichoptera (J.M.Black)Paul G.Wilson	SHEET NO. 06676790		M. Hislop & M. Davis WW 92.5
Maireana georgei (Diels)Paul G.Wilson	SHEET NO. 06676804		M. Hislop & M. Davis WW 92.6
Sclerolaena diacantha (Nees)Benth.	SHEET NO. 06676812		M. Hislop & M. Davis WW 92.7
Enchylaena lanata Paul G.Wilson	SHEET NO. 06676820		M. Hislop & M. Davis WW 92.8
Maireana carnosa (Moq.)Paul G.Wilson	SHEET NO. 06676839		M. Hislop & M. Davis WW 92.10
Crassula colorata (Nees)Ostenf. var. colorata	SHEET NO. 06676847		M. Hislop & M. Davis WW 92.11
Calandrinia aff. eremaea	SHEET NO. 06676855		M. Hislop & M. Davis WW 92.12
Cleretum papulosum (L.f.)L.Bolus	SHEET NO. 06676863	Alien	M. Hislop & M. Davis WW 92.13
Mesembryanthemum nodiflorum L.	SHEET NO. 06676871	Alien	M. Hislop & M. Davis WW 92.14
Pterostylis sp.inland(A.C.Beaglehole 11880)	SHEET NO. 06676898		M. Hislop & M. Davis WW 92.15
Ptilotus holosericeus (Moq.)F.Muell.	SHEET NO. 06676901		M. Hislop & M. Davis WW 92.16
Erodium cygnorum Nees subsp. cygnorum	SHEET NO. 06676928		M. Hislop & M. Davis WW 92.17
Plantago debilis R.Br.	SHEET NO. 06676936		M. Hislop & M. Davis WW 92.18
Calotis hispidula (F.Muell.)F.Muell.	SHEET NO. 06676944		M. Hislop & M. Davis WW 92.19
Trachymene cyanopetala (F.Muell.)Benth.	SHEET NO. 06676952		M. Hislop & M. Davis WW 92.20
Maireana marginata (Benth.)Paul G.Wilson	SHEET NO. 06676960		M. Hislop & M. Davis WW 92.21
Senecio glossanthus (Sond.)Belcher	SHEET NO. 06676979		M. Hislop & M. Davis WW 92.22
Velleia cynopotamica F.Muell.	SHEET NO. 06676987		M. Hislop & M. Davis WW 92.23
Daviesia nematophylla Benth.	SHEET NO. 06676995		M. Hislop & M. Davis WW 92.24
Melaleuca lateriflora Benth. subsp. lateriflora	SHEET NO. 06677002		M. Hislop & M. Davis WW 92.25
Exocarpos aphyllus R.Br.	SHEET NO. 06677010		M. Hislop & M. Davis WW 92.26
Templetonia sulcata (Meisn.)Benth.	SHEET NO. 06677029		M. Hislop & M. Davis WW 92.27
Eremophila oppositifolia subsp. angustifolia (S.Moore)Chinnock	SHEET NO. 06677037		M. Hislop & M. Davis WW 92.28
Goodenia pusilliflora F.Muell.	SHEET NO. 06677045		M. Hislop & M. Davis WW 92.29
Hyalosperma glutinosum Steetz subsp. glutinosum	SHEET NO. 06677053		M. Hislop & M. Davis WW 92.30
Isoetopsis graminifolia Turcz.	SHEET NO. 06677061		M. Hislop & M. Davis WW 92.31
Gunnipopsis rubra Chinnock	SHEET NO. 06677088		M. Hislop & M. Davis WW 92.32
Stellaria filiformis (Benth.)Mattf.	SHEET NO. 06677096		M. Hislop & M. Davis WW 92.33
Hydrocotyle pilifera var. glabrata Benth.	SHEET NO. 06677118		M. Hislop & M. Davis WW 92.34
Bromus rubens L.	SHEET NO. 06677126	Alien	M. Hislop & M. Davis WW 92.35
Podotheca gnaphalioides Graham	SHEET NO. 06677134		M. Hislop & M. Davis WW 92.36
Podolepis tepperi (F.Muell.)D.A.Cooke	SHEET NO. 06677142		M. Hislop & M. Davis WW 92.37
Goodenia berardiana (Gaudich.)Carolin	SHEET NO. 06677150		M. Hislop & M. Davis WW 92.38

**Site:** WW-93      **No. of Species:** 55

**Locality:** Kununoppin

**Vegetation:** *Eucalyptus loxophleba* ssp *supralaevis* woodland.

Eucalyptus loxophleba subsp. supralaevis L.A.S.Johnson & K.D.Hill	SHEET NO. 06577032		M. Hislop & M. Davis WW 93.1
--	--------------------	--	------------------------------

<i>Dodonaea inaequifolia</i> Turcz.	SHEET NO. 06577040		M. Hislop & M. Davis WW 93.2
<i>Acacia hemiteles</i> Benth.	SHEET NO. 06577059		M. Hislop & M. Davis WW 93.3
<i>Enchylaena lanata</i> Paul G.Wilson	SHEET NO. 06576974		M. Hislop & M. Davis WW 93.4
<i>Brassica tournefortii</i> Gouan	SHEET NO. 06577067	Alien	M. Hislop & M. Davis WW 93.5
<i>Senecio glossanthus</i> (Sond.)Belcher	SHEET NO. 06577075		M. Hislop & M. Davis WW 93.6
<i>Ursinia anthemoides</i> (L.)Poir.	SHEET NO. 06577083	Alien	M. Hislop & M. Davis WW 93.7
<i>Tripteris clandestina</i> Less.	SHEET NO. 06577091	Alien	M. Hislop & M. Davis WW 93.8
<i>Waitzia nitida</i> (Lindl.)Paul G.Wilson	SHEET NO. 06577105		M. Hislop & M. Davis WW 93.9
<i>Schoenia cassiniana</i> (Gaudich.)Steetz	SHEET NO. 06577113		M. Hislop & M. Davis WW 93.10
<i>Podotheca gnaphalioides</i> Graham	SHEET NO. 06577121		M. Hislop & M. Davis WW 93.11
<i>Sclerolaena diacantha</i> (Nees)Benth.	SHEET NO. 06577148		M. Hislop & M. Davis WW 93.12
<i>Thysanotus tenuis</i> Lindl.	SHEET NO. 06577156		M. Hislop & M. Davis WW 93.13
<i>Goodenia havilandii</i> Maiden & Betche	SHEET NO. 06577164		M. Hislop & M. Davis WW 93.14
<i>Trachymene cyanopetala</i> (F.Muell.)Benth.	SHEET NO. 06577172		M. Hislop & M. Davis WW 93.15
<i>Hypoxis glabella</i> R.Br. var. <i>glabella</i>	SHEET NO. 06577180		M. Hislop & M. Davis WW 93.16
<i>Goodenia pusilliflora</i> F.Muell.	SHEET NO. 06577199		M. Hislop & M. Davis WW 93.17
<i>Schoenus nanus</i> (Nees)Benth.	SHEET NO. 06577202		M. Hislop & M. Davis WW 93.18
<i>Isolepis marginata</i> (Thunb.)A.Dietr.	SHEET NO. 06577210	Alien	M. Hislop & M. Davis WW 93.19
<i>Gonocarpus nodulosus</i> Nees	SHEET NO. 06577229		M. Hislop & M. Davis WW 93.20
<i>Plantago debilis</i> R.Br.	SHEET NO. 06577237		M. Hislop & M. Davis WW 93.21
<i>Waitzia acuminata</i> Steetz var. <i>acuminata</i>	SHEET NO. 06577245		M. Hislop & M. Davis WW 93.22
<i>Blennospora phlegmatocarpa</i> (Diels)P.S.Short	SHEET NO. 06577253		M. Hislop & M. Davis WW 93.23
<i>Actinobole uliginosum</i> (A.Gray)H.Eichler	SHEET NO. 06577261		M. Hislop & M. Davis WW 93.24
<i>Erodium cygnorum</i> Nees subsp. <i>cygnorum</i>	SHEET NO. 06577288		M. Hislop & M. Davis WW 93.25
<i>Hypochaeris glabra</i> L.	SHEET NO. 06577296	Alien	M. Hislop & M. Davis WW 93.26
<i>Zaluzianskya divaricata</i> (Thunb.)Walp.	SHEET NO. 06577318	Alien	M. Hislop & M. Davis WW 93.27
<i>Anagallis arvensis</i> var. <i>caerulea</i> Gouan	SHEET NO. 06577326	Alien	M. Hislop & M. Davis WW 93.28
<i>Silene gallica</i> L. var. <i>gallica</i>	SHEET NO. 06577334	Alien	M. Hislop & M. Davis WW 93.29
<i>Crassula colorata</i> var. <i>acuminata</i> (Reader)Toelken	SHEET NO. 06577342		M. Hislop & M. Davis WW 93.30
<i>Pentaschistis airoides</i> (Nees)Stapf	SHEET NO. 06577350	Alien	M. Hislop & M. Davis WW 93.31
<i>Hydrocotyle pilifera</i> var. <i>glabrata</i> Benth.	SHEET NO. 06577369		M. Hislop & M. Davis WW 93.32
<i>Calandrinia eremaea</i> Ewart	SHEET NO. 06577377		M. Hislop & M. Davis WW 93.33
<i>Podolepis lessonii</i> (Cass.)Benth.	SHEET NO. 06577385		M. Hislop & M. Davis WW 93.34
<i>Podolepis capillaris</i> (Steetz)Diels	SHEET NO. 06577393		M. Hislop & M. Davis WW 93.35
<i>Calandrinia</i> aff. <i>eremaea</i>	SHEET NO. 06577407		M. Hislop & M. Davis WW 93.36
<i>Arctotheca calendula</i> (L.)Levyns	SHEET NO. 06577415	Alien	M. Hislop & M. Davis WW 93.37
<i>Calandrinia granulifera</i> Benth.	SHEET NO. 06577423		M. Hislop & M. Davis WW 93.38
<i>Millotia myosotidifolia</i> (Benth.)Steetz	SHEET NO. 06577431		M. Hislop & M. Davis WW 93.39
<i>Brachyscome pusilla</i> Steetz	SHEET NO. 06577458		M. Hislop & M. Davis WW 93.40
<i>Triptilodiscus pygmaeus</i> Turcz	SHEET NO. 06577466		M. Hislop & M. Davis WW 93.41
<i>Rhagodia drummondii</i> Moq.	SHEET NO. 06577474		M. Hislop & M. Davis WW 93.42
<i>Scaevola spinescens</i> R.Br.	SHEET NO. 06577482		M. Hislop & M. Davis WW 93.43
<i>Acacia acuminata</i> Benth.	SHEET NO. 06577490		M. Hislop & M. Davis WW 93.44
<i>Hakea recurva</i> Meisn. subsp. <i>recurva</i>	SHEET NO. 06577504		M. Hislop & M. Davis WW 93.45
<i>Eremophila decipiens</i> Ostenf. subsp. <i>decipiens</i>	SHEET NO. 06577512		M. Hislop & M. Davis WW 93.46
<i>Ptilotus holosericeus</i> (Moq.)F.Muell.	SHEET NO. 06577520		M. Hislop & M. Davis WW 93.47
<i>Rhodanthe rubella</i> (A.Gray)Paul G.Wilson	SHEET NO. 06577539		M. Hislop & M. Davis WW 93.48
<i>Eriochiton sclerolaenoides</i> (F.Muell.)A.J.Scott	SHEET NO. 06577547		M. Hislop & M. Davis WW 93.49
<i>Lepidium rotundum</i> (Desv.)DC.	SHEET NO. 06577555		M. Hislop & M. Davis WW 93.50
<i>Rhodanthe manglesii</i> Lindl.	SHEET NO. 06577563		M. Hislop & M. Davis WW 93.51
<i>Caladenia hirta</i> subsp. <i>rosea</i> Hopper & A.P.Br.	SHEET NO. 06577571		M. Hislop & M. Davis WW 93.52
<i>Maireana trichoptera</i> (J.M.Black)Paul G.Wilson	SHEET NO. 06577598		M. Hislop & M. Davis WW 93.53
<i>Neurachne alopecuroidea</i> R.Br.	SHEET NO. 06577601		M. Hislop & M. Davis WW 93.54

Solanum cleistogamum Symon

SHEET NO. 06577628

M. Hislop &amp; M. Davis WW 93.55

**Site:** WW-94      **No. of Species:** 60**Locality:** Nungarin**Vegetation:** *Eucalyptus loxophleba* ssp *lissophloia* woodland.

Eucalyptus loxophleba subsp. lissophloia		
L.A.S.Johnson & K.D.Hill	SHEET NO. 06576893	M. Hislop & M. Davis WW 94.1
Eremophila drummondii F.Muell.	SHEET NO. 06576923	M. Hislop & M. Davis WW 94.2
Enchylaena lanata Paul G.Wilson	SHEET NO. 06576680	M. Hislop & M. Davis WW 94.3
Austrostipa nitida (Summerh.& C.E.Hubb.)S.W.L.Jacobs & J.Everett	SHEET NO. 06576869	M. Hislop & M. Davis WW 94.4
Austrostipa scabra (Lindl.)S.W.L.Jacobs & J.Everett	SHEET NO. 06576877	M. Hislop & M. Davis WW 94.5
Austrostipa trichophylla (Benth.)S.W.L.Jacobs & J.Everett	SHEET NO. 06576885	M. Hislop & M. Davis WW 94.6
Schoenia cassiniana (Gaudich.)Steetz	SHEET NO. 06576931	M. Hislop & M. Davis WW 94.7
Goodenia berardiana (Gaudich.)Carolin	SHEET NO. 06576907	M. Hislop & M. Davis WW 94.8
Nicotiana rotundifolia Lindl.	SHEET NO. 06576915	M. Hislop & M. Davis WW 94.9
Aristida contorta F.Muell.	SHEET NO. 06576664	M. Hislop & M. Davis WW 94.10
Brassica tournefortii Gouan	SHEET NO. 06576826	Alien M. Hislop & M. Davis WW 94.11
Waitzia acuminata Steetz var. acuminata	SHEET NO. 06576656	M. Hislop & M. Davis WW 94.12
Solanum cleistogamum Symon	SHEET NO. 06576788	M. Hislop & M. Davis WW 94.13
Crassula colorata (Nees)Ostenf. var. colorata	SHEET NO. 06576737	M. Hislop & M. Davis WW 94.14
Isoetopsis graminifolia Turcz.	SHEET NO. 06576745	M. Hislop & M. Davis WW 94.15
Ptilotus gaudichaudii (Steud.)J.M.Black	SHEET NO. 06576648	M. Hislop & M. Davis WW 94.16
Calandrinia calyprata Hook.f.	SHEET NO. 06576478	M. Hislop & M. Davis WW 94.17 A
Calandrinia aff. eremaea	SHEET NO. 06576486	M. Hislop & M. Davis WW 94.17 B
Medicago minima (L.)Bartal.	SHEET NO. 06576672	Alien M. Hislop & M. Davis WW 94.18
Thysanotus speckii Brittan	SHEET NO. 06576850	M. Hislop & M. Davis WW 94.19
Ceratogyne obionoides Turcz.	SHEET NO. 06576532	M. Hislop & M. Davis WW 94.20
Triglochin sp.B Flora of Australia(P.G.Wilson 4294)	SHEET NO. 06576494	M. Hislop & M. Davis WW 94.21
Schoenus nanus (Nees)Benth.	SHEET NO. 06576540	M. Hislop & M. Davis WW 94.22
Calandrinia granulifera Benth.	SHEET NO. 06576559	M. Hislop & M. Davis WW 94.23
Maireana marginata (Benth.)Paul G.Wilson	SHEET NO. 06576397	M. Hislop & M. Davis WW 94.24
Chthonocephalus pseudevax Steetz	SHEET NO. 06576508	M. Hislop & M. Davis WW 94.25
Actinobole uliginosum (A.Gray)H.Eichler	SHEET NO. 06576516	M. Hislop & M. Davis WW 94.26
Menkea australis Lehm.	SHEET NO. 06576524	M. Hislop & M. Davis WW 94.27
Rhodanthe pygmaea (DC.)Paul G.Wilson	SHEET NO. 06576427	M. Hislop & M. Davis WW 94.28
Thysanotus tenuis Lindl.	SHEET NO. 06576842	M. Hislop & M. Davis WW 94.29
Velleia cynopotamica F.Muell.	SHEET NO. 06576419	M. Hislop & M. Davis WW 94.30
Austroanthonia acerosa (Vickery)H.P.Linder	SHEET NO. 06576400	M. Hislop & M. Davis WW 94.31
Brachyscome perpusilla (Steetz)J.M.Black	SHEET NO. 06576443	M. Hislop & M. Davis WW 94.32
Cleretum papulosum (L.f.)L.Bolus	SHEET NO. 06576435	Alien M. Hislop & M. Davis WW 94.33
Erodium cygnorum Nees subsp. cygnorum	SHEET NO. 06576451	M. Hislop & M. Davis WW 94.34
Daucus glochidiatus (Labill.)Fisch.,C.A.Mey.& Ave-Lall.	SHEET NO. 06576621	M. Hislop & M. Davis WW 94.35
Ptilotus holosericeus (Moq.)F.Muell.	SHEET NO. 06576605	M. Hislop & M. Davis WW 94.36
Millotia myosotidifolia (Benth.)Steetz	SHEET NO. 06576753	M. Hislop & M. Davis WW 94.37
Arthropodium curvipes S.Moore	SHEET NO. 06576613	M. Hislop & M. Davis WW 94.38
Calotis hispidula (F.Muell.)F.Muell.	SHEET NO. 06576346	M. Hislop & M. Davis WW 94.39
Hydrocotyle pilifera var. glabrata Benth.	SHEET NO. 06576338	M. Hislop & M. Davis WW 94.40
Ptilotus spathulatus (R.Br.)Steud.	SHEET NO. 06576311	M. Hislop & M. Davis WW 94.41
Brunonia australis R.Br.	SHEET NO. 06576303	M. Hislop & M. Davis WW 94.42
Podolepis capillaris (Steetz)Diels	SHEET NO. 06576265	M. Hislop & M. Davis WW 94.43
Arthropodium dyeri (Domin)Brittan	SHEET NO. 06576362	M. Hislop & M. Davis WW 94.44
Trachymene cyanopetala (F.Muell.)Benth.	SHEET NO. 06576354	M. Hislop & M. Davis WW 94.45

Rhodanthe rubella (A.Gray)Paul G.Wilson	SHEET NO. 06576567		M. Hislop & M. Davis WW 94.46
Monachather paradoxus Steud.	SHEET NO. 06576796		M. Hislop & M. Davis WW 94.47
Acacia acuminata Benth.	SHEET NO. 06576710		M. Hislop & M. Davis WW 94.48
Melaleuca vinnula Craven & Lepschi	SHEET NO. 06576729		M. Hislop & M. Davis WW 94.49
Borya constricta Churchill	SHEET NO. 06576389		M. Hislop & M. Davis WW 94.50
Drosera macrantha Endl.	SHEET NO. 06576818		M. Hislop & M. Davis WW 94.51
Tripteris clandestina Less.	SHEET NO. 06576761	Alien	M. Hislop & M. Davis WW 94.52
Phlegmatospermum drummondii (Benth.)O.E.Schulz	SHEET NO. 06576834		M. Hislop & M. Davis WW 94.53
Podotheca gnaphalioides Graham	SHEET NO. 06576699		M. Hislop & M. Davis WW 94.54
Ptilotus obovatus (Gaudich.)F.Muell.	SHEET NO. 06576702		M. Hislop & M. Davis WW 94.55
Cyanicula amplexans (A.S.George)Hopper & A.P.Br.	SHEET NO. 06576370		M. Hislop & M. Davis WW 94.56
Caladenia roei Benth.	SHEET NO. 06576591		M. Hislop & M. Davis WW 94.57
Lawrencella rosea Lindl.	SHEET NO. 06576583		M. Hislop & M. Davis WW 94.58
Cheilanthes adiantoides T.C.Chambers & P.A.Farrant	SHEET NO. 06576575		M. Hislop & M. Davis WW 94.59

**Site:** WW-95                      **No. of Species:** 29

**Locality:** Trayning

**Vegetation:** *Eucalyptus longicornis* woodland.

Eucalyptus longicornis (F.Muell.)Maiden	SHEET NO. 06578136		M. Hislop & M. Davis WW 95.1
Atriplex stipitata Benth.	SHEET NO. 06578144		M. Hislop & M. Davis WW 95.2
Melaleuca lanceolata Otto	SHEET NO. 06578152		M. Hislop & M. Davis WW 95.3
Enchylaena lanata Paul G.Wilson	SHEET NO. 06578160		M. Hislop & M. Davis WW 95.4
Maireana trichoptera (J.M.Black)Paul G.Wilson	SHEET NO. 06578179		M. Hislop & M. Davis WW 95.5
Sclerolaena diacantha (Nees)Benth.	SHEET NO. 06578187		M. Hislop & M. Davis WW 95.6
Eriochiton sclerolaenoides (F.Muell.)A.J.Scott	SHEET NO. 06578195		M. Hislop & M. Davis WW 95.7
Sclerolaena drummondii (Benth.)Domin	SHEET NO. 06578209		M. Hislop & M. Davis WW 95.8
Spergularia bocconii (Scheele)Graebn.	SHEET NO. 06578217	Alien	M. Hislop & M. Davis WW 95.9
Mesembryanthemum nodiflorum L.	SHEET NO. 06578225	Alien	M. Hislop & M. Davis WW 95.10
Zygophyllum ovatum Ewart & Jean White	SHEET NO. 06578233		M. Hislop & M. Davis WW 95.11
Brassica tournefortii Gouan	SHEET NO. 06578241	Alien	M. Hislop & M. Davis WW 95.13
Asteridea athrixioides (Sond.& F.Muell.)Kroner	SHEET NO. 06578268		M. Hislop & M. Davis WW 95.14
Omphalolappula concava (F.Muell.)Brand	SHEET NO. 06578306		M. Hislop & M. Davis WW 95.15
Ptilotus holosericeus (Moq.)F.Muell.	SHEET NO. 06578276		M. Hislop & M. Davis WW 95.16
Maireana marginata (Benth.)Paul G.Wilson	SHEET NO. 06578314		M. Hislop & M. Davis WW 95.17
Rostraria pumila (L.)Tzvelev	SHEET NO. 06578322	Alien	M. Hislop & M. Davis WW 95.18
Pogonolepis muelleriana (Sond.)P.S.Short	SHEET NO. 06578330		M. Hislop & M. Davis WW 95.19
Bromus rubens L.	SHEET NO. 06578349	Alien	M. Hislop & M. Davis WW 95.20
Hordeum glaucum Steud.	SHEET NO. 06578357	Alien	M. Hislop & M. Davis WW 95.21
Sisymbrium irio L.	SHEET NO. 06578365	Alien	M. Hislop & M. Davis WW 95.22
Senecio glossanthus (Sond.)Belcher	SHEET NO. 06578373		M. Hislop & M. Davis WW 95.23
Angianthus tomentosus J.C.Wendl.	SHEET NO. 06578284		M. Hislop & M. Davis WW 95.24
Salsola tragus L. subsp. tragus	SHEET NO. 06578292		M. Hislop & M. Davis WW 95.25
Acacia anthochaera Maslin	SHEET NO. 06578381		M. Hislop & M. Davis WW 95.26
Crassula colorata (Nees)Ostenf. var. colorata	SHEET NO. 06578403		M. Hislop & M. Davis WW 95.27
Austrostipa nitida (Summerh.& C.E.Hubb.)S.W.L.Jacobs & J.Everett	SHEET NO. 06578438		M. Hislop & M. Davis WW 95.28
Austrostipa nitida (Summerh.& C.E.Hubb.)S.W.L.Jacobs & J.Everett	SHEET NO. 06578411		M. Hislop & M. Davis WW 95.29
Sisymbrium runcinatum DC.	SHEET NO. 06578446	Alien	M. Hislop & M. Davis WW 95.30

**Site:** WW-96      **No. of Species:** 44**Locality:** Trayning**Vegetation:** *Eucalyptus salmonophloia* / *E. salubris* woodland.

<i>Eucalyptus salubris</i> F.Muell.	SHEET NO. 06566502		M. Hislop & M. Davis WW 96.01
<i>Eucalyptus yilgarnensis</i> (Maiden)Brooker	SHEET NO. 06566510		M. Hislop & M. Davis WW 96.02
<i>Eucalyptus celastroides</i> subsp. <i>virella</i> Brooker	SHEET NO. 06566529		M. Hislop & M. Davis WW 96.03
<i>Santalum acuminatum</i> (R.Br.)A.DC.	SHEET NO. 06566537		M. Hislop & M. Davis WW 96.04
<i>Olearia muelleri</i> (Sond.)Benth.	SHEET NO. 06566545		M. Hislop & M. Davis WW 96.05
<i>Acacia hemiteles</i> Benth.	SHEET NO. 06566553		M. Hislop & M. Davis WW 96.06
<i>Acacia erinacea</i> Benth.	SHEET NO. 06566561		M. Hislop & M. Davis WW 96.07
<i>Ptilotus holosericeus</i> (Moq.)F.Muell.	SHEET NO. 06566588		M. Hislop & M. Davis WW 96.08
<i>Sclerolaena diacantha</i> (Nees)Benth.	SHEET NO. 06566596		M. Hislop & M. Davis WW 96.09
<i>Brassica tournefortii</i> Gouan	SHEET NO. 06566618	Alien	M. Hislop & M. Davis WW 96.10
<i>Senecio glossanthus</i> (Sond.)Belcher	SHEET NO. 06566626		M. Hislop & M. Davis WW 96.11
<i>Triglochin</i> sp.B Flora of Australia(P.G.Wilson 4294)	SHEET NO. 06566634		M. Hislop & M. Davis WW 96.12
<i>Arctotheca calendula</i> (L.)Levyns	SHEET NO. 06566642	Alien	M. Hislop & M. Davis WW 96.13
<i>Bulbine semibarbata</i> (R.Br.)Haw.	SHEET NO. 06566650		M. Hislop & M. Davis WW 96.14
<i>Isoetopsis graminifolia</i> Turcz.	SHEET NO. 06566669		M. Hislop & M. Davis WW 96.15
<i>Mesembryanthemum nodiflorum</i> L. <i>Daucus glochidiatus</i> (Labill.)Fisch.,C.A.Mey.& Ave-Lall.	SHEET NO. 06566685	Alien	M. Hislop & M. Davis WW 96.16
<i>Blennospora drummondii</i> A.Gray	SHEET NO. 06566693		M. Hislop & M. Davis WW 96.17
<i>Velleia cynopotamica</i> F.Muell.	SHEET NO. 06566707		M. Hislop & M. Davis WW 96.18
<i>Goodenia berardiana</i> (Gaudich.)Carolin	SHEET NO. 06566715		M. Hislop & M. Davis WW 96.19
<i>Wahlenbergia gracilentia</i> Lothian	SHEET NO. 06566723		M. Hislop & M. Davis WW 96.20
<i>Plantago debilis</i> R.Br.	SHEET NO. 06566731		M. Hislop & M. Davis WW 96.21
<i>Trachymene cyanopetala</i> (F.Muell.)Benth.	SHEET NO. 06566758		M. Hislop & M. Davis WW 96.22
<i>Hydrocotyle rugulosa</i> Turcz.	SHEET NO. 06566766		M. Hislop & M. Davis WW 96.23
<i>Hydrocotyle pilifera</i> Turcz. var. <i>glabrata</i> Benth.	SHEET NO. 06566774		M. Hislop & M. Davis WW 96.24
<i>Rhodanthe laevis</i> (A.Gray)Paul G.Wilson	SHEET NO. 06566782		M. Hislop & M. Davis WW 96.25
<i>Podolepis tepperi</i> (F.Muell.)D.A.Cooke	SHEET NO. 06566790		M. Hislop & M. Davis WW 96.26
<i>Menkea australis</i> Lehm.	SHEET NO. 06566804		M. Hislop & M. Davis WW 96.27
<i>Maireana marginata</i> (Benth.)Paul G.Wilson	SHEET NO. 06566812		M. Hislop & M. Davis WW 96.28
<i>Calotis hispidula</i> (F.Muell.)F.Muell.	SHEET NO. 06566820		M. Hislop & M. Davis WW 96.29
<i>Calandrinia calyptrata</i> Hook.f.	SHEET NO. 06566839		M. Hislop & M. Davis WW 96.30
<i>Crassula colorata</i> (Nees)Ostenf. var. <i>colorata</i>	SHEET NO. 06566847		M. Hislop & M. Davis WW 96.31
<i>Stellaria filiformis</i> (Benth.)Mattf.	SHEET NO. 06566855		M. Hislop & M. Davis WW 96.32
<i>Erymophyllum tenellum</i> (Turcz.)Paul G.Wilson	SHEET NO. 06566863		M. Hislop & M. Davis WW 96.33
<i>Crassula decumbens</i> Thunb. var. <i>decumbens</i>	SHEET NO. 06566871		M. Hislop & M. Davis WW 96.34
<i>Acacia acuarua</i> W.Fitzg.	SHEET NO. 06566898		M. Hislop & M. Davis WW 96.35
<i>Rhagodia preissii</i> Moq. subsp. <i>preissii</i>	SHEET NO. 06566901		M. Hislop & M. Davis WW 96.36
<i>Maireana georgei</i> (Diels)Paul G.Wilson	SHEET NO. 06566928		M. Hislop & M. Davis WW 96.37
<i>Maireana carnosia</i> (Moq.)Paul G.Wilson	SHEET NO. 06566936		M. Hislop & M. Davis WW 96.38
<i>Daviesia nematophylla</i> Benth.	SHEET NO. 06566944		M. Hislop & M. Davis WW 96.39
<i>Eucalyptus salmonophloia</i> F.Muell.	SHEET NO. 06566952		M. Hislop & M. Davis WW 96.40
<i>Acacia intricata</i> S.Moore	SHEET NO. 06566960		M. Hislop & M. Davis WW 96.41
<i>Wilsonia humilis</i> R.Br.	SHEET NO. 06566979		M. Hislop & M. Davis WW 96.42
<i>Wilsonia humilis</i> R.Br.	SHEET NO. 06566987		M. Hislop & M. Davis WW 96.43

**Site:** WW-97                    **No. of Species:** 44  
**Locality:** Kellerberrin  
**Vegetation:** *Eucalyptus loxophleba* woodland.

<i>Eucalyptus loxophleba</i> Benth. subsp. loxophleba	SHEET NO. 06686737		M. Hislop & M. Griffiths WW 97.1
<i>Acacia acuminata</i> Benth.	SHEET NO. 06686745		M. Hislop & M. Griffiths WW 97.2
<i>Austrostipa scabra</i> (Lindl.)S.W.L.Jacobs & J.Everett	SHEET NO. 06686753		M. Hislop & M. Griffiths WW 97.3
<i>Ursinia anthemoides</i> (L.)Poir.	SHEET NO. 06686761	Alien	M. Hislop & M. Griffiths WW 97.4
<i>Ehrharta longiflora</i> Sm.	SHEET NO. 06686788	Alien	M. Hislop & M. Griffiths WW 97.5
<i>Brassica tournefortii</i> Gouan	SHEET NO. 06686796	Alien	M. Hislop & M. Griffiths WW 97.6
<i>Santalum spicatum</i> (R.Br.)A.DC.	SHEET NO. 06686834		M. Hislop & M. Griffiths WW 97.7
<i>Dampiera lavandulacea</i> Lindl.	SHEET NO. 06686842		M. Hislop & M. Griffiths WW 97.8
<i>Millotia tenuifolia</i> Cass. var. <i>tenuifolia</i>	SHEET NO. 06686850		M. Hislop & M. Griffiths WW 97.9
<i>Podotheca angustifolia</i> (Labill.)Less.	SHEET NO. 06686869		M. Hislop & M. Griffiths WW 97.10
<i>Bromus rubens</i> L.	SHEET NO. 06686877	Alien	M. Hislop & M. Griffiths WW 97.11
<i>Arctotheca calendula</i> (L.)Levyns	SHEET NO. 06686885	Alien	M. Hislop & M. Griffiths WW 97.12
<i>Brachyscome iberidifolia</i> Benth.	SHEET NO. 06686893		M. Hislop & M. Griffiths WW 97.13
<i>Pentaschistis airoides</i> (Nees)Stapf	SHEET NO. 06686907	Alien	M. Hislop & M. Griffiths WW 97.14
<i>Brachyscome perpusilla</i> (Steetz)J.M.Black	SHEET NO. 06686818		M. Hislop & M. Griffiths WW 97.15
<i>Schoenus clandestinus</i> S.T.Blake	SHEET NO. 06686826		M. Hislop & M. Griffiths WW 97.16
<i>Hypochaeris glabra</i> L.	SHEET NO. 06686915	Alien	M. Hislop & M. Griffiths WW 97.17
<i>Ptilotus declinatus</i> Nees	SHEET NO. 06686923		M. Hislop & M. Griffiths WW 97.18
<i>Velleia cynopotamica</i> F.Muell.	SHEET NO. 06686931		M. Hislop & M. Griffiths WW 97.19
<i>Ceratogyne obionoides</i> Turcz.	SHEET NO. 06686958		M. Hislop & M. Griffiths WW 97.20
<i>Parentucellia latifolia</i> (L.)Caruel	SHEET NO. 06686966	Alien	M. Hislop & M. Griffiths WW 97.21
<i>Arthropodium dyeri</i> (Domin)Brittan	SHEET NO. 06686974		M. Hislop & M. Griffiths WW 97.22
<i>Neurachne alopecuroidea</i> R.Br.	SHEET NO. 06686982		M. Hislop & M. Griffiths WW 97.23
<i>Rhodanthe pygmaea</i> (DC.)Paul G.Wilson	SHEET NO. 06686990		M. Hislop & M. Griffiths WW 97.24
<i>Borya sphaerocephala</i> R.Br.	SHEET NO. 06687008		M. Hislop & M. Griffiths WW 97.25
<i>Podotheca gnaphalioides</i> Graham	SHEET NO. 06687016		M. Hislop & M. Griffiths WW 97.26
<i>Trachymene cyanopetala</i> (F.Muell.)Benth.	SHEET NO. 06687024		M. Hislop & M. Griffiths WW 97.27
<i>Waitzia acuminata</i> Steetz var. <i>acuminata</i>	SHEET NO. 06687032		M. Hislop & M. Griffiths WW 97.28
<i>Lawrencella rosea</i> Lindl.	SHEET NO. 06687040		M. Hislop & M. Griffiths WW 97.29
<i>Gilberta tenuifolia</i> Turcz.	SHEET NO. 06687059		M. Hislop & M. Griffiths WW 97.30
<i>Drosera macrantha</i> Endl.	SHEET NO. 06687067		M. Hislop & M. Griffiths WW 97.31
<i>Gonocarpus nodulosus</i> Nees	SHEET NO. 06687075		M. Hislop & M. Griffiths WW 97.32
<i>Monachather paradoxus</i> Steud.	SHEET NO. 06687083		M. Hislop & M. Griffiths WW 97.33
<i>Vulpia myuros</i> (L.)Gmel. var. <i>myuros</i>	SHEET NO. 06687091	Alien	M. Hislop & M. Griffiths WW 97.34
<i>Scaevola hamiltonii</i> K.Krause	SHEET NO. 06687164		M. Hislop & M. Griffiths WW 97.40 A
<i>Scaevola hamiltonii</i> K.Krause	SHEET NO. 06687172		M. Hislop & M. Griffiths WW 97.40 B
<i>Trachymene ornata</i> (Endl.)Druce	SHEET NO. 06687180		M. Hislop & M. Griffiths WW 97.41
<i>Hakea recurva</i> Meisn. subsp. <i>recurva</i>	SHEET NO. 06687105		M. Hislop & M. Griffiths WW 97.35
<i>Phyllangium sulcatum</i> Dunlop	SHEET NO. 06687113		M. Hislop & M. Griffiths WW 97.36
<i>Allocasuarina campestris</i> (Diels)L.A.S.Johnson	SHEET NO. 06687121		M. Hislop & M. Griffiths WW 97.37
<i>Cleretum papulosum</i> (L.f.)L.Bolus	SHEET NO. 06687148	Alien	M. Hislop & M. Griffiths WW 97.38

Baekkea crispiflora F.Muell.	SHEET NO. 06687156	M. Hislop & M. Griffiths WW 97.39
Calandrinia eremaea Ewart	SHEET NO. 06687199	M. Hislop & M. Griffiths WW 97.42
Styliidium merrallii (F.Muell.)T.Durand & B.D.Jacks.	SHEET NO. 06687202	M. Hislop & M. Griffiths WW 97.43

**Site:** WW-98                      **No. of Species:** 42

**Locality:** Merredin

**Vegetation:** *Eucalyptus salmonophloia/salubris* woodland

<i>Eucalyptus salubris</i> F.Muell.	SHEET NO. 06569161	M. Hislop & M. Griffiths WW 98.1
<i>Eucalyptus salmonophloia</i> F.Muell.	SHEET NO. 06569188	M. Hislop & M. Griffiths WW 98.2
<i>Olearia muelleri</i> (Sond.)Benth.	SHEET NO. 06569196	M. Hislop & M. Griffiths WW 98.3
<i>Eremophila drummondii</i> F.Muell.	SHEET NO. 06569218	M. Hislop & M. Griffiths WW 98.4
<i>Grevillea acuaria</i> Benth.	SHEET NO. 06569226	M. Hislop & M. Griffiths WW 98.5
<i>Acacia colletioides</i> Benth.	SHEET NO. 06569234	M. Hislop & M. Griffiths WW 98.6
<i>Templetonia sulcata</i> (Meisn.)Benth.	SHEET NO. 06569242	M. Hislop & M. Griffiths WW 98.7
<i>Templetonia sulcata</i> (Meisn.)Benth.	SHEET NO. 06569250	M. Hislop & M. Griffiths WW 98.8
<i>Sclerolaena diacantha</i> (Nees)Benth.	SHEET NO. 6569269	M. Hislop & M. Griffiths WW 98.9
<i>Maireana marginata</i> (Benth.)Paul G.Wilson	SHEET NO. 06569277	M. Hislop & M. Griffiths WW 98.10
<i>Daucus glochidiatus</i> (Labill.)Fisch.,C.A.Mey.& Ave-Lall.	SHEET NO. 06569285	M. Hislop & M. Griffiths WW 98.11
<i>Bulbine semibarbata</i> (R.Br.)Haw.	SHEET NO. 06569293	M. Hislop & M. Griffiths WW 98.12
<i>Menkea australis</i> Lehm.	SHEET NO. 06569307	M. Hislop & M. Griffiths WW 98.13
<i>Ptilotus holosericeus</i> (Moq.)F.Muell.	SHEET NO. 06569315	M. Hislop & M. Griffiths WW 98.14
<i>Podolepis tepperi</i> (F.Muell.)D.A.Cooke	SHEET NO. 06569323	M. Hislop & M. Griffiths WW 98.15
<i>Calandrinia calyprata</i> Hook.f.	SHEET NO. 06569331	M. Hislop & M. Griffiths WW 98.16 A
<i>Calandrinia</i> aff. <i>eremaea</i>	SHEET NO. 06569358	M. Hislop & M. Griffiths WW 98.16 B
<i>Hydrocotyle pilifera</i> var. <i>glabrata</i> Benth.	SHEET NO. 06569366	M. Hislop & M. Griffiths WW 98.17
<i>Stellaria filiformis</i> (Benth.)Mattf.	SHEET NO. 06569374	M. Hislop & M. Griffiths WW 98.18
<i>Wahlenbergia gracilentia</i> Lothian	SHEET NO. 06569382	M. Hislop & M. Griffiths WW 98.19
<i>Rhodanthe pygmaea</i> (DC.)Paul G.Wilson	SHEET NO. 06569390	M. Hislop & M. Griffiths WW 98.20
<i>Rhodanthe laevis</i> (A.Gray)Paul G.Wilson	SHEET NO. 06569404	M. Hislop & M. Griffiths WW 98.21
<i>Calotis hispidula</i> (F.Muell.)F.Muell.	SHEET NO. 06569412	M. Hislop & M. Griffiths WW 98.22
<i>Arthropodium dyeri</i> (Domin)Brittan	SHEET NO. 06569420	M. Hislop & M. Griffiths WW 98.23
<i>Ptilotus spathulatus</i> (R.Br.)Steud.	SHEET NO. 06569439	M. Hislop & M. Griffiths WW 98.24
<i>Crassula colorata</i> (Nees)Ostenf. var. <i>colorata</i>	SHEET NO. 06569447	M. Hislop & M. Griffiths WW 98.25
<i>Erodium cygnorum</i> Nees subsp. <i>cygnorum</i>	SHEET NO. 06569455	M. Hislop & M. Griffiths WW 98.26
<i>Eucalyptus capillosa</i> Brooker & Hopper subsp. <i>capillosa</i>	SHEET NO. 06569463	M. Hislop & M. Griffiths WW 98.27
<i>Eucalyptus sheathiana</i> Maiden	SHEET NO. 06569471	M. Hislop & M. Griffiths WW 98.28
<i>Eucalyptus loxophleba</i> subsp. <i>lissophloia</i> L.A.S.Johnson & K.D.Hill	SHEET NO. 06569498	M. Hislop & M. Griffiths WW 98.29
<i>Acacia hemiteles</i> Benth.	SHEET NO. 06569501	M. Hislop & M. Griffiths WW 98.30
<i>Santalum acuminatum</i> (R.Br.)A.DC.	SHEET NO. 06569528	M. Hislop & M. Griffiths WW 98.31
<i>Rhagodia drummondii</i> Moq.	SHEET NO. 06569536	M. Hislop & M. Griffiths WW 98.32
<i>Amyema miquelii</i> (Miq.)Tiegh.	SHEET NO. 06569544	M. Hislop & M. Griffiths WW 98.33
<i>Enchylaena lanata</i> Paul G.Wilson	SHEET NO. 06569579	M. Hislop & M. Griffiths WW 98.34
<i>Austrostipa elegantissima</i> (Labill.)S.W.L.Jacobs & J.Everett	SHEET NO. 06569552	M. Hislop & M. Griffiths WW 98.35
<i>Rhagodia preissii</i> Moq.	SHEET NO. 06569560	M. Hislop & M. Griffiths WW 98.36
<i>Maireana trichoptera</i> (J.M.Black)Paul G.Wilson	SHEET NO. 06569587	M. Hislop & M. Griffiths WW 98.37
<i>Maireana georgei</i> (Diels)Paul G.Wilson	SHEET NO. 06569595	M. Hislop & M. Griffiths WW 98.38
<i>Cleretum papulosum</i> (L.f.)L.Bolus	SHEET NO. 06569609	Alien M. Hislop & M. Griffiths WW 98.39
<i>Eucalyptus yilgarnensis</i> (Maiden)Brooker	SHEET NO. 06569617	M. Hislop & M. Griffiths WW 98.40
<i>Eucalyptus calycogona</i> Turcz. subsp. <i>calycogona</i>	SHEET NO. 06569625	M. Hislop & M. Griffiths WW 98.41

**Site:** WW-99      **No. of Species:** 54**Locality:** Warralakin**Vegetation:** *Eucalyptus salmonophloia* woodland.

<i>Eucalyptus salmonophloia</i> F.Muell.	SHEET NO. 06579531		M. Hislop & M. Griffiths WW 99.1
<i>Olearia muelleri</i> (Sond.)Benth.	SHEET NO. 06579558		M. Hislop & M. Griffiths WW 99.2
<i>Maireana trichoptera</i> (J.M.Black)Paul G.Wilson	SHEET NO. 06579566		M. Hislop & M. Griffiths WW 99.3
<i>Maireana marginata</i> (Benth.)Paul G.Wilson	SHEET NO. 06579574		M. Hislop & M. Griffiths WW 99.4
<i>Acacia erinacea</i> Benth.	SHEET NO. 06579582		M. Hislop & M. Griffiths WW 99.5
<i>Maireana georgei</i> (Diels)Paul G.Wilson	SHEET NO. 06579590		M. Hislop & M. Griffiths WW 99.6
<i>Eucalyptus sheathiana</i> Maiden	SHEET NO. 06579604		M. Hislop & M. Griffiths WW 99.7
<i>Austroanthonia caespitosa</i> (Gaudich.)H.P.Linder	SHEET NO. 06579701		M. Hislop & M. Griffiths WW 99.8
<i>Austrostipa elegantissima</i> (Labill.)S.W.L.Jacobs & J.Everett	SHEET NO. 06579728		M. Hislop & M. Griffiths WW 99.9
<i>Waitzia acuminata</i> Steetz var. <i>acuminata</i>	SHEET NO. 06579736		M. Hislop & M. Griffiths WW 99.10
<i>Eremophila resinosa</i> (Endl.)F.Muell.	SHEET NO. 06579744		M. Hislop & M. Griffiths WW 99.11
<i>Rhagodia drummondii</i> Moq.	SHEET NO. 06579752		M. Hislop & M. Griffiths WW 99.12
<i>Sclerolaena diacantha</i> (Nees)Benth.	SHEET NO. 06579760		M. Hislop & M. Griffiths WW 99.13
<i>Scaevola spinescens</i> R.Br.	SHEET NO. 06579779		M. Hislop & M. Griffiths WW 99.14
<i>Goodenia berardiana</i> (Gaudich.)Carolyn	SHEET NO. 06579787		M. Hislop & M. Griffiths WW 99.15
<i>Enchylaena lanata</i> Paul G.Wilson	SHEET NO. 06579795		M. Hislop & M. Griffiths WW 99.16
<i>Exocarpos aphyllus</i> R.Br.	SHEET NO. 06579809		M. Hislop & M. Griffiths WW 99.17
<i>Calandrinia</i> aff. <i>eremaea</i>	SHEET NO. 06579817		M. Hislop & M. Griffiths WW 99.18
<i>Senecio glossanthus</i> (Sond.)Belcher	SHEET NO. 06579825		M. Hislop & M. Griffiths WW 99.19
<i>Phlegmatospermum drummondii</i> (Benth.)O.E.Schulz	SHEET NO. 06579833		M. Hislop & M. Griffiths WW 99.20
<i>Cleretum papulosum</i> (L.f.)L.Bolus	SHEET NO. 06579841	Alien	M. Hislop & M. Griffiths WW 99.21
<i>Calotis hispidula</i> (F.Muell.)F.Muell.	SHEET NO. 06579868		M. Hislop & M. Griffiths WW 99.22
<i>Crassula colorata</i> (Nees)Ostenf. var. <i>colorata</i>	SHEET NO. 06579876		M. Hislop & M. Griffiths WW 99.23
<i>Trachymene cyanopetala</i> (F.Muell.)Benth.	SHEET NO. 06579884		M. Hislop & M. Griffiths WW 99.24
<i>Hydrocotyle pilifera</i> var. <i>glabrata</i> Benth.	SHEET NO. 06579892		M. Hislop & M. Griffiths WW 99.25
<i>Omphalolappula concava</i> (F.Muell.)Brand	SHEET NO. 06579906		M. Hislop & M. Griffiths WW 99.26
<i>Rhodanthe pygmaea</i> (DC.)Paul G.Wilson	SHEET NO. 06579914		M. Hislop & M. Griffiths WW 99.27
<i>Plantago debilis</i> R.Br.	SHEET NO. 06579922		M. Hislop & M. Griffiths WW 99.28
<i>Podolepis tepperi</i> (F.Muell.)D.A.Cooke	SHEET NO. 06579930		M. Hislop & M. Griffiths WW 99.29
<i>Medicago minima</i> (L.)Bartal.	SHEET NO. 06579949	Alien	M. Hislop & M. Griffiths WW 99.30
<i>Pogonolepis muelleriana</i> (Sond.)P.S.Short	SHEET NO. 06579957		M. Hislop & M. Griffiths WW 99.31
<i>Eriochiton sclerolaenoides</i> (F.Muell.)A.J.Scott	SHEET NO. 06579965		M. Hislop & M. Griffiths WW 99.32
<i>Stellaria filiformis</i> (Benth.)Mattf.	SHEET NO. 06579973		M. Hislop & M. Griffiths WW 99.33
<i>Podotheca gnaphalioides</i> Graham	SHEET NO. 06579981		M. Hislop & M. Griffiths WW 99.34
<i>Ptilotus holosericeus</i> (Moq.)F.Muell.	SHEET NO. 06580009		M. Hislop & M. Griffiths WW 99.35
<i>Daviesia nematophylla</i> Benth.	SHEET NO. 06580017		M. Hislop & M. Griffiths WW 99.36
<i>Stenopetalum filifolium</i> Benth.	SHEET NO. 06580025		M. Hislop & M. Griffiths WW 99.37
<i>Eremophila decipiens</i> Ostenf. subsp. <i>decipiens</i>	SHEET NO. 06580033		M. Hislop & M. Griffiths WW 99.38
<i>Eremophila ionantha</i> Diels	SHEET NO. 06580041		M. Hislop & M. Griffiths WW 99.39
<i>Eremophila oppositifolia</i> subsp. <i>angustifolia</i> (S.Moore)Chinnock	SHEET NO. 06580068		M. Hislop & M. Griffiths WW 99.40
<i>Senna artemisioides</i> subsp. <i>filifolia</i> Randell	SHEET NO. 06580076		M. Hislop & M. Griffiths WW 99.41
<i>Asteridea atrixioides</i> (Sond.& F.Muell.)Kroner	SHEET NO. 06580084		M. Hislop & M. Griffiths WW 99.42
<i>Westringia cephalantha</i> F.Muell.	SHEET NO. 06580092		M. Hislop & M. Griffiths WW 99.43



Eucalyptus loxophleba subsp. lissophloia L.A.S.Johnson & K.D.Hill	SHEET NO. 06580106		M. Hislop & M. Griffiths WW 99.44
Santalum acuminatum (R.Br.)A.DC.	SHEET NO. 06580114		M. Hislop & M. Griffiths WW 99.45
Sonchus oleraceus L.	SHEET NO. 06580122	Alien	M. Hislop & M. Griffiths WW 99.46
Austrostipa scabra (Lindl.)S.W.L.Jacobs & J.Everett	SHEET NO. 06580424		M. Hislop & M. Griffiths WW 99.47
Angianthus tomentosus J.C.Wendl.	SHEET NO. 06580149		M. Hislop & M. Griffiths WW 99.48
Podolepis capillaris (Steetz)Diels	SHEET NO. 06580157		M. Hislop & M. Griffiths WW 99.49
Ptilotus gaudichaudii (Steud.)J.M.Black	SHEET NO. 06580165		M. Hislop & M. Griffiths WW 99.50
Goodenia pusilliflora F.Muell.	SHEET NO. 06580173		M. Hislop & M. Griffiths WW 99.51
Hyalosperma glutinosum Steetz subsp. glutinosum	SHEET NO. 06580181		M. Hislop & M. Griffiths WW 99.52
Daucus glochidiatus (Labill.)Fisch.,C.A.Mey.& Ave-Lall.	SHEET NO. 06580203		M. Hislop & M. Griffiths WW 99.53
Acacia andrewsii W.Fitzg.	SHEET NO. 06580211		M. Hislop & M. Griffiths WW 99.54

**Site:** WW-100                      **No. of Species:** 44

**Locality:** Westonia

**Vegetation:** *Eucalyptus longicornis* woodland.

Eucalyptus longicornis (F.Muell.)Maiden	SHEET NO. 06579019		M. Hislop & M. Griffiths WW 100.1
Eucalyptus sheathiana Maiden	SHEET NO. 06579027		M. Hislop & M. Griffiths WW 100.2
Melaleuca pauperiflora subsp. fastigiata Barlow	SHEET NO. 06579035		M. Hislop & M. Griffiths WW 100.3
Brassica tournefortii Gouan	SHEET NO. 06579043	Alien	M. Hislop & M. Griffiths WW 100.4
Austrostipa drummondii (Steud.)S.W.L.Jacobs & J.Everett	SHEET NO. 06579051		M. Hislop & M. Griffiths WW 100.5
Sclerolaena diacantha (Nees)Benth.	SHEET NO. 06579078		M. Hislop & M. Griffiths WW 100.6
Hordeum glaucum Steud.	SHEET NO. 06579086	Alien	M. Hislop & M. Griffiths WW 100.7
Cleretum papulosum (L.f.)L.Bolus	SHEET NO. 06579094	Alien	M. Hislop & M. Griffiths WW 100.8
Austroanthonia caespitosa (Gaudich.)H.P.Linder	SHEET NO. 06579108		M. Hislop & M. Griffiths WW 100.9
Calandrinia aff. eremaea	SHEET NO. 06579116		M. Hislop & M. Griffiths WW 100.10
Crassula colorata (Nees)Ostenf. var. colorata	SHEET NO. 06579124		M. Hislop & M. Griffiths WW 100.11
Asteridea atrixioides (Sond.& F.Muell.)Kroner	SHEET NO. 06579132		M. Hislop & M. Griffiths WW 100.12
Ptilotus holosericeus (Moq.)F.Muell.	SHEET NO. 06579140		M. Hislop & M. Griffiths WW 100.13
Medicago minima (L.)Bartal.	SHEET NO. 06579159	Alien	M. Hislop & M. Griffiths WW 100.14
Omphalolappula concava (F.Muell.)Brand	SHEET NO. 06579167		M. Hislop & M. Griffiths WW 100.15
Maireana marginata (Benth.)Paul G.Wilson	SHEET NO. 06579175		M. Hislop & M. Griffiths WW 100.16
Senecio glossanthus (Sond.)Belcher	SHEET NO. 06579213		M. Hislop & M. Griffiths WW 100.20
Calotis hispidula (F.Muell.)F.Muell.	SHEET NO. 06579299		M. Hislop & M. Griffiths WW 100.28
Plantago debilis R.Br.	SHEET NO. 06579183		M. Hislop & M. Griffiths WW 100.17
Sisymbrium irio L.	SHEET NO. 06579191	Alien	M. Hislop & M. Griffiths WW 100.18
Eriochiton sclerolaenoides (F.Muell.)A.J.Scott	SHEET NO. 06579205		M. Hislop & M. Griffiths WW 100.19
Stellaria filiformis (Benth.)Mattf.	SHEET NO. 06579221		M. Hislop & M. Griffiths WW 100.21
Chenopodium cristatum (F.Muell.)F.Muell.	SHEET NO. 06579248		M. Hislop & M. Griffiths WW 100.22
Hypochaeris glabra L.	SHEET NO. 06579256	Alien	M. Hislop & M. Griffiths WW 100.23
Pogonolepis muelleriana (Sond.)P.S.Short	SHEET NO. 06579264		M. Hislop & M. Griffiths WW 100.24
Erodium cicutarium (L.)L'Her.	SHEET NO. 06579272	Alien	M. Hislop & M. Griffiths WW 100.26
Rostraria pumila (L.)Tzvelev	SHEET NO. 06579280		M. Hislop & M. Griffiths WW 100.27

## Alien

Eragrostis dielsii Pilg.	SHEET NO. 06579302		M. Hislop & M. Griffiths WW 100.29
Eucalyptus salubris F.Muell.	SHEET NO. 06579310		M. Hislop & M. Griffiths WW 100.30
Eucalyptus yilgarnensis (Maiden)Brooker	SHEET NO. 06579329		M. Hislop & M. Griffiths WW 100.31
Schismus barbatus (L.)Thell.	SHEET NO. 06579337	Alien	M. Hislop & M. Griffiths WW 100.32
Austrostipa trichophylla (Benth.)S.W.L.Jacobs & J.Everett	SHEET NO. 06579345		M. Hislop & M. Griffiths WW 100.33
Acacia colletioides Benth.	SHEET NO. 06579353		M. Hislop & M. Griffiths WW 100.34
Alyxia buxifolia R.Br.	SHEET NO. 06579361		M. Hislop & M. Griffiths WW 100.35
Podotheca gnaphalioides Graham	SHEET NO. 06579388		M. Hislop & M. Griffiths WW 100.36
Austrostipa elegantissima (Labill.)S.W.L.Jacobs & J.Everett	SHEET NO. 06579396		M. Hislop & M. Griffiths WW 100.37
Bromus rubens L.	SHEET NO. 06579418	Alien	M. Hislop & M. Griffiths WW 100.38
Austrostipa flavescens (Labill.)S.W.L.Jacobs & J.Everett	SHEET NO. 06579442		M. Hislop & M. Griffiths WW 100.39
Erodium aureum Carolin	SHEET NO. 06579434	Alien	M. Hislop & M. Griffiths WW 100.40
Santalum acuminatum (R.Br.)A.DC.	SHEET NO. 06579450		M. Hislop & M. Griffiths WW 100.41
Exocarpos aphyllus R.Br.	SHEET NO. 6579469		M. Hislop & M. Griffiths WW 100.42
Zygophyllum ovatum Ewart & Jean White	SHEET NO. 06579477		M. Hislop & M. Griffiths WW 100.43
Vittadinia humerata N.T.Burb.	SHEET NO. 06579485		M. Hislop & M. Griffiths WW 100.44
Arctotheca calendula (L.)Levyans	SHEET NO. 06579493	Alien	M. Hislop & M. Griffiths WW 100.45

**Site:** WW-101      **No. of Species:** 46

**Locality:** Merredin

**Vegetation:** *Eucalyptus salubris* woodland.

Eucalyptus salubris F.Muell.	SHEET NO. 06582664		M. Hislop & M. Griffiths WW 101.01
Eucalyptus salmonophloia F.Muell.	SHEET NO. 06582672		M. Hislop & M. Griffiths WW 101.02
Eucalyptus loxophleba subsp. supralaevis L.A.S.Johnson & K.D.Hill	SHEET NO. 6582680	Alien	M. Hislop & M. Griffiths WW 101.03
Melaleuca acuminata F.Muell. subsp. acuminata	SHEET NO. 06582699		M. Hislop & M. Griffiths WW 101.04
Melaleuca lateriflora Benth. subsp. lateriflora	SHEET NO. 06582702		M. Hislop & M. Griffiths WW 101.05
Eremophila drummondii F.Muell.	SHEET NO. 06582710		M. Hislop & M. Griffiths WW 101.06
Lolium multiflorum x perenne	SHEET NO. 06582729	Alien	M. Hislop & M. Griffiths WW 101.07
Bromus rubens L.	SHEET NO. 06582737	Alien	M. Hislop & M. Griffiths WW 101.08
Crassula closiana (Gay)Reiche	SHEET NO. 06582745		M. Hislop & M. Griffiths WW 101.09
Calandrinia granulifera Benth.	SHEET NO. 06582753		M. Hislop & M. Griffiths WW 101.10
Euchiton sphaericus (Willd.)Holub	SHEET NO. 06582761		M. Hislop & M. Griffiths WW 101.11
Spergularia sp.3 Bullfinch(R.A.Saffrey 905)	SHEET NO. 06582788		M. Hislop & M. Griffiths WW 101.12
Zaluzianskya divaricata (Thunb.)Walp.	SHEET NO. 06582796	Alien	M. Hislop & M. Griffiths WW 101.13
Podolepis tepperi (F.Muell.)D.A.Cooke	SHEET NO. 06582818		M. Hislop & M. Griffiths WW 101.14
Schoenus humilis Benth.	SHEET NO. 06582826		M. Hislop & M. Griffiths WW 101.15
Millotia tenuifolia Cass. var. tenuifolia	SHEET NO. 06582834		M. Hislop & M. Griffiths WW 101.16
Ptilotus spathulatus (R.Br.)Steud.	SHEET NO. 06582842		M. Hislop & M. Griffiths WW 101.17
Waitzia acuminata Steetz var. acuminata	SHEET NO. 06582850		M. Hislop & M. Griffiths WW 101.18
Plantago debilis R.Br.	SHEET NO. 06582869		M. Hislop & M. Griffiths WW 101.19
Hypochaeris glabra L.	SHEET NO. 06582877	Alien	M. Hislop & M. Griffiths WW 101.20
Wahlenbergia gracilentia Lothian	SHEET NO. 06582885		M. Hislop & M. Griffiths WW 101.21
Triglochin sp.B Flora of Australia(P.G.Wilson 4294)	SHEET NO. 06582893		M. Hislop & M. Griffiths WW 101.22
Rhodanthe pygmaea (DC.)Paul G.Wilson	SHEET NO. 06582907		M. Hislop & M. Griffiths WW 101.23

Brachyscome perpusilla (Steetz)J.M.Black	SHEET NO. 06582915		M. Hislop & M. Griffiths WW 101.24
Crassula decumbens Thunb. var. decumbens	SHEET NO. 06582923		M. Hislop & M. Griffiths WW 101.25
Erymophyllum tenellum (Turcz.)Paul G.Wilson	SHEET NO. 06582931		M. Hislop & M. Griffiths WW 101.26
Avellinia michelii (Savi)Parl.	SHEET NO. 06582958	Alien	M. Hislop & M. Griffiths WW 101.27
Crassula colorata (Nees)Ostenf. var. colorata	SHEET NO. 06582966		M. Hislop & M. Griffiths WW 101.28
Stellaria filiformis (Benth.)Mattf.	SHEET NO. 06582974		M. Hislop & M. Griffiths WW 101.29
Trachymene pilosa Sm.	SHEET NO. 06582982		M. Hislop & M. Griffiths WW 101.30
Senecio glossanthus (Sond.)Belcher	SHEET NO. 06582990		M. Hislop & M. Griffiths WW 101.31
Hydrocotyle rugulosa Turcz.	SHEET NO. 06583008		M. Hislop & M. Griffiths WW 101.32
Pentaschistis airoides (Nees)Stapf	SHEET NO. 06583016	Alien	M. Hislop & M. Griffiths WW 101.33
Trifolium tomentosum L. var. tomentosum	SHEET NO. 06583024	Alien	M. Hislop & M. Griffiths WW 101.34
Blennospora drummondii A.Gray	SHEET NO. 06583032		M. Hislop & M. Griffiths WW 101.35
Calandrinia calyptrata Hook.f.	SHEET NO. 06583040		M. Hislop & M. Griffiths WW 101.36
Trachymene cyanopetala (F.Muell.)Benth.	SHEET NO. 06583059		M. Hislop & M. Griffiths WW 101.37
Arctotheca calendula (L.)Levyns	SHEET NO. 06583067	Alien	M. Hislop & M. Griffiths WW 101.38
Hydrocotyle pilifera var. glabrata Benth.	SHEET NO. 06583075		M. Hislop & M. Griffiths WW 101.39
Rhodanthe laevis (A.Gray)Paul G.Wilson	SHEET NO. 06583083		M. Hislop & M. Griffiths WW 101.40
Calotis hispidula (F.Muell.)F.Muell.	SHEET NO. 06583091		M. Hislop & M. Griffiths WW 101.41
Daucus glochidiatus (Labill.)Fisch.,C.A.Mey.& Ave-Lall.	SHEET NO. 06583105		M. Hislop & M. Griffiths WW 101.42
Bulbine semibarbata (R.Br.)Haw.	SHEET NO. 06583113		M. Hislop & M. Griffiths WW 101.43
Trifolium glomeratum L.	SHEET NO. 06583121	Alien	M. Hislop & M. Griffiths WW 101.44
Cleretum papulosum (L.f.)L.Bolus	SHEET NO. 06583148	Alien	M. Hislop & M. Griffiths WW 101.45
Acacia merrallii F.Muell.	SHEET NO. 06583156		M. Hislop & M. Griffiths WW 101.46

**Site:** WW-102      **No. of Species:** 45

**Locality:** Merredin

**Vegetation:** Mixed mallee *Eucalyptus salubris* woodland.

Eucalyptus capillosa subsp. polyclada Brooker & Hopper	SHEET NO. 06568076		M. Hislop & M. Griffiths WW 102.1
Eucalyptus sheathiana Maiden	SHEET NO. 06568114		M. Hislop & M. Griffiths WW 102.2
Eucalyptus salubris F.Muell.	SHEET NO. 06568084		M. Hislop & M. Griffiths WW 102.3
Eucalyptus tephroclada L.A.S.Johnson & K.D.Hill	SHEET NO. 06568092		M. Hislop & M. Griffiths WW 102.4
Eucalyptus yilgarnensis (Maiden)Brooker	SHEET NO. 06568106		M. Hislop & M. Griffiths WW 102.5
Melaleuca acuminata F.Muell. subsp. acuminata	SHEET NO. 06568122		M. Hislop & M. Griffiths WW 102.6
Olearia muelleri (Sond.)Benth.	SHEET NO. 06568130		M. Hislop & M. Griffiths WW 102.7
Grevillea acuaria Benth.	SHEET NO. 06568149		M. Hislop & M. Griffiths WW 102.8
Eremophila drummondii F.Muell.	SHEET NO. 06568157		M. Hislop & M. Griffiths WW 102.9
Eremophila drummondii F.Muell.	SHEET NO. 06568165		M. Hislop & M. Griffiths WW 102.10
Crassula colorata (Nees)Ostenf. var. colorata	SHEET NO. 06568173		M. Hislop & M. Griffiths WW 102.11
Blennospora drummondii A.Gray	SHEET NO. 06568181		M. Hislop & M. Griffiths WW 102.12
Millotia tenuifolia Cass. var. tenuifolia	SHEET NO. 06568203		M. Hislop & M. Griffiths WW 102.13
Trachymene cyanopetala (F.Muell.)Benth.	SHEET NO. 06568211		M. Hislop & M. Griffiths WW 102.14
Rhodanthe laevis (A.Gray)Paul G.Wilson	SHEET NO. 06568238		M. Hislop & M. Griffiths WW 102.15
Waitzia acuminata Steetz var. acuminata	SHEET NO. 06568246		M. Hislop & M. Griffiths WW 102.16
Calotis hispidula (F.Muell.)F.Muell.	SHEET NO. 06568254		M. Hislop & M. Griffiths WW 102.17
Thysanotus patersonii R.Br.	SHEET NO. 06568262		M. Hislop & M. Griffiths WW 102.18

Wahlenbergia gracilentia Lothian	SHEET NO. 06568270		M. Hislop & M. Griffiths WW 102.19
Hydrocotyle rugulosa Turcz.	SHEET NO. 06568289		M. Hislop & M. Griffiths WW 102.20
Hydrocotyle pilifera var. glabrata Benth.	SHEET NO. 06568297		M. Hislop & M. Griffiths WW 102.21
Plantago debilis R.Br.	SHEET NO. 06568300		M. Hislop & M. Griffiths WW 102.22
Calandrinia calyprata Hook.f.	SHEET NO. 06568319		M. Hislop & M. Griffiths WW 102.23
Eucalyptus flocktoniae (Maiden)Maiden subsp. flocktoniae	SHEET NO. 06568432		M. Hislop & M. Griffiths WW 102.23
Calandrinia corrigioloides Benth.	SHEET NO. 06568351		M. Hislop & M. Griffiths WW 102.24
Bulbine semibarbata (R.Br.)Haw.	SHEET NO. 06568335		M. Hislop & M. Griffiths WW 102.25
Podolepis lessonii (Cass.)Benth.	SHEET NO. 06568343		M. Hislop & M. Griffiths WW 102.26
Goodenia berardiana (Gaudich.)Carolin	SHEET NO. 06568378		M. Hislop & M. Griffiths WW 102.27
Velleia cynopotamica F.Muell.	SHEET NO. 06568459		M. Hislop & M. Griffiths WW 102.28
Ceratogyne obionoides Turcz.	SHEET NO. 06568394		M. Hislop & M. Griffiths WW 102.29
Vulpia muralis (Kunth)Nees	SHEET NO. 06568408	Alien	M. Hislop & M. Griffiths WW 102.30
Senecio glossanthus (Sond.)Belcher	SHEET NO. 06568416		M. Hislop & M. Griffiths WW 102.31
Trachymene ornata (Endl.)Druce	SHEET NO. 06568424		M. Hislop & M. Griffiths WW 102.32
Eucalyptus calycogona Turcz. subsp. calycogona	SHEET NO. 06568440		M. Hislop & M. Griffiths WW 102.34
Gastrobium parviflorum (Benth.)Crisp	SHEET NO. 06568467		M. Hislop & M. Griffiths WW 102.35
Melaleuca eleuterostachya F.Muell.	SHEET NO. 06568475		M. Hislop & M. Griffiths WW 102.36
Acacia hemiteles Benth.	SHEET NO. 06568483		M. Hislop & M. Griffiths WW 102.37
Acacia erinacea Benth.	SHEET NO. 06568491		M. Hislop & M. Griffiths WW 102.38
Acacia merrallii F.Muell.	SHEET NO. 06568505		M. Hislop & M. Griffiths WW 102.39
Dodonaea viscosa subsp. spatulata (Smith)J.G.West	SHEET NO. 06568513		M. Hislop & M. Griffiths WW 102.40
Phyllangium sulcatum Dunlop	SHEET NO. 06568521		M. Hislop & M. Griffiths WW 102.41
Austrostipa trichophylla (Benth.)S.W.L.Jacobs & J.Everett	SHEET NO. 06568548		M. Hislop & M. Griffiths WW 102.42
Microcybe albiflora Turcz.	SHEET NO. 06568556		M. Hislop & M. Griffiths WW 102.43
Maireana georgei (Diels)Paul G.Wilson	SHEET NO. 06568564		M. Hislop & M. Griffiths WW 102.44
Wilsonia humilis R.Br.	SHEET NO. 06568572		M. Hislop & M. Griffiths WW 102.45

**Site:** WW-103      **No. of Species:** 59

**Locality:** Merredin

**Vegetation:** *Eucalyptus loxophleba* woodland

Eucalyptus loxophleba subsp. lissophloia L.A.S.Johnson & K.D.Hill	SHEET NO. 06580637		M. Hislop & M. Griffiths WW 103.01
Podotheca gnaphalioides Graham	SHEET NO. 06580742		M. Hislop & M. Griffiths WW 103.10
Lomandra effusa (Lindl.)Ewart	SHEET NO. 06580645		M. Hislop & M. Griffiths WW 103.02
Olearia dampieri subsp. eremicola (Diels)Lander	SHEET NO. 06580653		M. Hislop & M. Griffiths WW 103.03
Desmodcladus asper (Nees)B.G.Briggs & L.A.S.Johnson	SHEET NO. 06580661		M. Hislop & M. Griffiths WW 103.04
Lepidosperma sp.	SHEET NO. 06580688		M. Hislop & M. Griffiths WW 103.05
Lepidosperma costale Nees	SHEET NO. 06580696		M. Hislop & M. Griffiths WW 103.06
Podolepis capillaris (Steetz)Diels	SHEET NO. 06580718		M. Hislop & M. Griffiths WW 103.07
Austrostipa trichophylla (Benth.)S.W.L.Jacobs & J.Everett	SHEET NO. 06580726		M. Hislop & M. Griffiths WW 103.08
Erodium cygnorum Nees subsp. cygnorum	SHEET NO. 06580734		M. Hislop & M. Griffiths WW 103.09
Senecio glossanthus (Sond.)Belcher	SHEET NO. 06580750		M. Hislop & M. Griffiths WW 103.11
Comesperma integerrimum Endl.	SHEET NO. 06580769		M. Hislop & M. Griffiths WW 103.12
Pentaschistis airoides (Nees)Stapf	SHEET NO. 06580777	Alien	M. Hislop & M. Griffiths WW 103.13
Waitzia acuminata Steetz var. acuminata	SHEET NO. 06580785		M. Hislop & M. Griffiths WW 103.14
Dampiera lavandulacea Lindl.	SHEET NO. 06580793		M. Hislop & M. Griffiths WW 103.15
Ursinia anthemoides (L.)Poir.	SHEET NO. 06580807	Alien	M. Hislop & M. Griffiths WW 103.16
Brassica tournefortii Gouan	SHEET NO. 06580815	Alien	M. Hislop & M. Griffiths WW 103.17
Helichrysum leucopsidium DC.	SHEET NO. 06580823		M. Hislop & M. Griffiths WW 103.18

<i>Tripteris clandestina</i> Less.	SHEET NO. 06580831	Alien	M. Hislop & M. Griffiths WW 103.20
<i>Caladenia roei</i> Benth.	SHEET NO. 06580858		M. Hislop & M. Griffiths WW 103.21
<i>Blennospora drummondii</i> A.Gray	SHEET NO. 06580866		M. Hislop & M. Griffiths WW 103.22
<i>Calotis hispidula</i> (F.Muell.)F.Muell.	SHEET NO. 06580874		M. Hislop & M. Griffiths WW 103.23
<i>Calandrinia eremaea</i> Ewart	SHEET NO. 06580882		M. Hislop & M. Griffiths WW 103.24
<i>Thysanotus speckii</i> Brittan	SHEET NO. 06580890		M. Hislop & M. Griffiths WW 103.25
<i>Triglochin</i> sp.B Flora of Australia(P.G.Wilson 4294)	SHEET NO. 06580904		M. Hislop & M. Griffiths WW 103.26
<i>Parentucellia latifolia</i> (L.)Caruel	SHEET NO. 06580912	Alien	M. Hislop & M. Griffiths WW 103.27
<i>Velleia cynopotamica</i> F.Muell.	SHEET NO. 06580920		M. Hislop & M. Griffiths WW 103.28
<i>Levenhookia dubia</i> Sond.	SHEET NO. 06580939		M. Hislop & M. Griffiths WW 103.29
<i>Hyalosperma demissum</i> (A.Gray)Paul G.Wilson	SHEET NO. 06580947		M. Hislop & M. Griffiths WW 103.30
<i>Chthonocephalus pseudevax</i> Steetz	SHEET NO. 06580955		M. Hislop & M. Griffiths WW 103.31
<i>Wahlenbergia gracilentia</i> Lothian	SHEET NO. 06580963		M. Hislop & M. Griffiths WW 103.32
<i>Calandrinia granulifera</i> Benth.	SHEET NO. 06580971		M. Hislop & M. Griffiths WW 103.33
<i>Crassula exserta</i> (Reader)Ostenf.	SHEET NO. 06580998		M. Hislop & M. Griffiths WW 103.34
<i>Ptilotus humilis</i> (Nees)F.Muell. subsp. <i>humilis</i>	SHEET NO. 06581005		M. Hislop & M. Griffiths WW 103.35
<i>Podotheca angustifolia</i> (Labill.)Less.	SHEET NO. 06581013		M. Hislop & M. Griffiths WW 103.36
<i>Plantago debilis</i> R.Br.	SHEET NO. 06581021		M. Hislop & M. Griffiths WW 103.37
<i>Daucus glochidiatus</i> (Labill.)Fisch.,C.A.Mey.& Ave-Lall.	SHEET NO. 06581048		M. Hislop & M. Griffiths WW 103.38
<i>Actinobole uliginosum</i> (A.Gray)H.Eichler	SHEET NO. 06581056		M. Hislop & M. Griffiths WW 103.39
<i>Rhodanthe laevis</i> (A.Gray)Paul G.Wilson	SHEET NO. 06581064		M. Hislop & M. Griffiths WW 103.40
<i>Hypochaeris glabra</i> L.	SHEET NO. 06581072	Alien	M. Hislop & M. Griffiths WW 103.41
<i>Rhodanthe pygmaea</i> (DC.)Paul G.Wilson	SHEET NO. 06581080		M. Hislop & M. Griffiths WW 103.42
<i>Millotia tenuifolia</i> Cass. var. <i>tenuifolia</i>	SHEET NO. 06581099		M. Hislop & M. Griffiths WW 103.43
<i>Arctotheca calendula</i> (L.)Levyns	SHEET NO. 06581102	Alien	M. Hislop & M. Griffiths WW 103.44
<i>Anagallis arvensis</i> var. <i>caerulea</i> Gouan	SHEET NO. 06581110	Alien	M. Hislop & M. Griffiths WW 103.45
<i>Isolepis marginata</i> (Thunb.)A.Dietr.	SHEET NO. 06581129	Alien	M. Hislop & M. Griffiths WW 103.46
<i>Brachyscome iberidifolia</i> Benth.	SHEET NO. 06581145		M. Hislop & M. Griffiths WW 103.47
<i>Hydrocotyle pilifera</i> var. <i>glabrata</i> Benth.	SHEET NO. 06581137		M. Hislop & M. Griffiths WW 103.47
<i>Trachymene cyanopetala</i> (F.Muell.)Benth.	SHEET NO. 06581153		M. Hislop & M. Griffiths WW 103.49
<i>Lawrencella rosea</i> Lindl.	SHEET NO. 06581161		M. Hislop & M. Griffiths WW 103.50
<i>Spartochloa scirpoidea</i> (Steud.)C.E.Hubb.	SHEET NO. 06581188		M. Hislop & M. Griffiths WW 103.51
<i>Rhagodia preissii</i> Moq. subsp. <i>preissii</i>	SHEET NO. 06581285		M. Hislop & M. Griffiths WW 103.60
<i>Eucalyptus sheathiana</i> Maiden	SHEET NO. 06581196		M. Hislop & M. Griffiths WW 103.52
<i>Senna artemisioides</i> subsp. <i>filifolia</i> Randell	SHEET NO. 06581218		M. Hislop & M. Griffiths WW 103.53
<i>Melaleuca</i> sp.	SHEET NO. 06581226		M. Hislop & M. Griffiths WW 103.54
<i>Melaleuca acuminata</i> F.Muell. subsp. <i>acuminata</i>	SHEET NO. 06581234		M. Hislop & M. Griffiths WW 103.55
<i>Melaleuca spicigera</i> S.Moore	SHEET NO. 06581242		M. Hislop & M. Griffiths WW 103.56
<i>Isotropis juncea</i> Turcz.	SHEET NO. 06581250		M. Hislop & M. Griffiths WW 103.57
<i>Gonocarpus nodulosus</i> Nees	SHEET NO. 06581269		M. Hislop & M. Griffiths WW 103.58
<i>Leptospermum erubescens</i> Schauer	SHEET NO. 06581277		M. Hislop & M. Griffiths WW 103.59

**Site:** WW-104      **No. of Species:** 52

**Locality:** Narembeen

**Vegetation:** *Eucalyptus salmonophloia* woodland.

<i>Eucalyptus salmonophloia</i> F.Muell.	SHEET NO. 06568602		M. Hislop & M. Griffiths WW 104.1
<i>Olearia dampieri</i> subsp. <i>eremicola</i> (Diels)Lander	SHEET NO. 06568610		M. Hislop & M. Griffiths WW 104.2
<i>Grevillea huegelii</i> Meisn.	SHEET NO. 06568599		M. Hislop & M. Griffiths WW 104.3
<i>Acacia acuminata</i> Benth.	SHEET NO. 06568629		M. Hislop & M. Griffiths WW 104.4
<i>Enchylaena lanata</i> Paul G.Wilson	SHEET NO. 06568637		M. Hislop & M. Griffiths WW 104.5
<i>Austrostipa trichophylla</i> (Benth.)S.W.L.Jacobs & J.Everett	SHEET NO. 06568645		M. Hislop & M. Griffiths WW 104.6

Desmocladius asper (Nees)B.G.Briggs & L.A.S.Johnson	SHEET NO. 06568653		M. Hislop & M. Griffiths WW 104.7
Rhagodia drummondii Moq.	SHEET NO. 06568661		M. Hislop & M. Griffiths WW 104.8
Daviesia benthamii Meisn. subsp. benthamii	SHEET NO. 06568688		M. Hislop & M. Griffiths WW 104.9
Westringia rigida R.Br.	SHEET NO. 06568696		M. Hislop & M. Griffiths WW 104.10
Dianella revoluta R.Br.	SHEET NO. 06568718		M. Hislop & M. Griffiths WW 104.11
Daviesia pachyloma Turcz.	SHEET NO. 06568726		M. Hislop & M. Griffiths WW 104.12
Lomandra effusa (Lindl.)Ewart	SHEET NO. 06568734		M. Hislop & M. Griffiths WW 104.13
Dampiera lavandulacea Lindl.	SHEET NO. 06568742		M. Hislop & M. Griffiths WW 104.14
Ehrharta longiflora Sm.	SHEET NO. 06568750	Alien	M. Hislop & M. Griffiths WW 104.15
Ursinia anthemoides (L.)Poir.	SHEET NO. 06568769	Alien	M. Hislop & M. Griffiths WW 104.16
Lepidosperma costale Nees	SHEET NO. 06568777		M. Hislop & M. Griffiths WW 104.17
Neurachne alopecuroidea R.Br.	SHEET NO. 06568785		M. Hislop & M. Griffiths WW 104.18
Austrostipa elegantissima (Labill.)S.W.L.Jacobs & J.Everett	SHEET NO. 06568793		M. Hislop & M. Griffiths WW 104.19
Thysanotus patersonii R.Br.	SHEET NO. 06568807		M. Hislop & M. Griffiths WW 104.20
Trachymene pilosa Sm.	SHEET NO. 06568815		M. Hislop & M. Griffiths WW 104.21
Rhodanthe citrina (Benth.)Paul G.Wilson	SHEET NO. 06568823		M. Hislop & M. Griffiths WW 104.22
Brachyscome iberidifolia Benth.	SHEET NO. 06568831		M. Hislop & M. Griffiths WW 104.23
Calandrinia corrigioloides Benth.	SHEET NO. 06568858		M. Hislop & M. Griffiths WW 104.24
Gilberta tenuifolia Turcz.	SHEET NO. 06568866		M. Hislop & M. Griffiths WW 104.25
Actinobole uliginosum (A.Gray)H.Eichler	SHEET NO. 06568874		M. Hislop & M. Griffiths WW 104.26
Millotia tenuifolia Cass. var. tenuifolia	SHEET NO. 06568882		M. Hislop & M. Griffiths WW 104.27
Crassula colorata (Nees)Ostenf.	SHEET NO. 06568890		M. Hislop & M. Griffiths WW 104.28 A
Crassula exserta (Reader)Ostenf.	SHEET NO. 06568904		M. Hislop & M. Griffiths WW 104.28
Hyalosperma demissum (A.Gray)Paul G.Wilson	SHEET NO. 06568912		M. Hislop & M. Griffiths WW 104.29
Ptilotus manglesii (Lindl.)F.Muell.	SHEET NO. 06568920		M. Hislop & M. Griffiths WW 104.30
Cleretum papulosum (L.f.)L.Bolus	SHEET NO. 06568939	Alien	M. Hislop & M. Griffiths WW 104.31
Prasophyllum gracile Lindl.	SHEET NO. 06568947		M. Hislop & M. Griffiths WW 104.32
Ceratogyne obionoides Turcz.	SHEET NO. 06568955		M. Hislop & M. Griffiths WW 104.33
Gonocarpus nodulosus Nees	SHEET NO. 06568963		M. Hislop & M. Griffiths WW 104.34
Lawrencella rosea Lindl.	SHEET NO. 06568971		M. Hislop & M. Griffiths WW 104.35
Borya laciniata Churchill	SHEET NO. 06568998		M. Hislop & M. Griffiths WW 104.36
Isolepis marginata (Thunb.)A.Dietr.	SHEET NO. 06569005	Alien	M. Hislop & M. Griffiths WW 104.37
Rhodanthe laevis (A.Gray)Paul G.Wilson	SHEET NO. 06569013		M. Hislop & M. Griffiths WW 104.38
Pentaschistis airoides (Nees)Stapf	SHEET NO. 06569021	Alien	M. Hislop & M. Griffiths WW 104.39
Caladenia pendens Hopper & A.P.Br.	SHEET NO. 06569048		M. Hislop & M. Griffiths WW 104.40
Rhagodia preissii Moq. subsp. preissii	SHEET NO. 06569056		M. Hislop & M. Griffiths WW 104.41
Acacia hemiteles Benth.	SHEET NO. 06569064		M. Hislop & M. Griffiths WW 104.42
Acacia microbotrya Benth. var. microbotrya	SHEET NO. 06569072		M. Hislop & M. Griffiths WW 104.43
Senna artemisioides subsp. filifolia Randell	SHEET NO. 06569080		M. Hislop & M. Griffiths WW 104.44
Calandrinia eremaea Ewart	SHEET NO. 06569099		M. Hislop & M. Griffiths WW 104.45
Tripteris clandestina Less.	SHEET NO. 06569102	Alien	M. Hislop & M. Griffiths WW 104.46
Eremophila glabra (R.Br.)Ostenf.	SHEET NO. 06569110		M. Hislop & M. Griffiths WW 104.47
Calandrinia calyprata Hook.f.	SHEET NO. 06569129		M. Hislop & M. Griffiths WW 104.48
Waitzia acuminata Steetz var. acuminata	SHEET NO. 06569137		M. Hislop & M. Griffiths WW 104.49
Podolepis capillaris (Steetz)Diels	SHEET NO. 06569145		M. Hislop & M. Griffiths WW 104.50
Podotheca gnaphalioides Graham	SHEET NO. 06569153		M. Hislop & M. Griffiths WW 104.51

**Site:** WW-105      **No. of Species:** 56

**Locality:** Wongan Hills

**Vegetation:** *Eucalyptus loxophleba* woodland.

<i>Eucalyptus loxophleba</i> Benth. subsp. <i>loxophleba</i>	SHEET NO. 06581293		M. Hislop & M. Griffiths WW 105.01
<i>Brassica tournefortii</i> Gouan	SHEET NO. 06581307	Alien	M. Hislop & M. Griffiths WW 105.03
<i>Austrostipa variabilis</i>	SHEET NO. 06581315		M. Hislop & M. Griffiths WW 105.4

(Hughes)S.W.L.Jacobs & J.Everett			
<i>Austrostipa elegantissima</i>			
(Labill.)S.W.L.Jacobs & J.Everett	SHEET NO. 06581323		M. Hislop & M. Griffiths WW 105.05
<i>Arctotheca calendula</i> (L.)Levyns	SHEET NO. 06581331	Alien	M. Hislop & M. Griffiths WW 105.06
<i>Lolium rigidum</i> Gaudin	SHEET NO. 06581358	Alien	M. Hislop & M. Griffiths WW 105.07
<i>Austrodanthonia caespitosa</i>			
(Gaudich.)H.P.Linder	SHEET NO. 06581366		M. Hislop & M. Griffiths WW 105.08
<i>Comesperma integerrimum</i> Endl.	SHEET NO. 06581374		M. Hislop & M. Griffiths WW 105.09
<i>Arthropodium dyeri</i> (Domin)Brittan	SHEET NO. 06581382		M. Hislop & M. Griffiths WW 105.10
<i>Daucus glochidiatus</i>			
(Labill.)Fisch.,C.A.Mey.& Ave-Lall.	SHEET NO. 06581390		M. Hislop & M. Griffiths WW 105.11
<i>Sonchus oleraceus</i> L.	SHEET NO. 06581404	Alien	M. Hislop & M. Griffiths WW 105.12
<i>Emex australis</i> Steinh.	SHEET NO. 06581412	Alien	M. Hislop & M. Griffiths WW 105.13
<i>Hypochaeris glabra</i> L.	SHEET NO. 06581420	Alien	M. Hislop & M. Griffiths WW 105.14
<i>Bulbine semibarbata</i> (R.Br.)Haw.	SHEET NO. 06581439		M. Hislop & M. Griffiths WW 105.15
<i>Senecio glossanthus</i> (Sond.)Belcher	SHEET NO. 6581447		M. Hislop & M. Griffiths WW 105.16
<i>Goodenia pusilliflora</i> F.Muell.	SHEET NO. 06581455		M. Hislop & M. Griffiths WW 105.17
<i>Erodium cygnorum</i> Nees subsp. <i>cygnorum</i>	SHEET NO. 06581463		M. Hislop & M. Griffiths WW 105.18
<i>Bromus rubens</i> L.	SHEET NO. 06581471	Alien	M. Hislop & M. Griffiths WW 105.19
<i>Maireana marginata</i> (Benth.)Paul G.Wilson	SHEET NO. 06581498		M. Hislop & M. Griffiths WW 105.20
<i>Bromus diandrus</i> Roth	SHEET NO. 06581501	Alien	M. Hislop & M. Griffiths WW 105.21
<i>Cotula bipinnata</i> Thunb.	SHEET NO. 06581528	Alien	M. Hislop & M. Griffiths WW 105.22
<i>Parentucellia latifolia</i> (L.)Caruel	SHEET NO. 06581536	Alien	M. Hislop & M. Griffiths WW 105.23
<i>Podolepis lessonii</i> (Cass.)Benth.	SHEET NO. 06581544		M. Hislop & M. Griffiths WW 105.24
<i>Triglochin</i> sp.B Flora of			
Australia(P.G.Wilson 4294)	SHEET NO. 06581552		M. Hislop & M. Griffiths WW 105.25
<i>Cheilanthes sieberi</i> Kunze subsp. <i>sieberi</i>	SHEET NO. 06581560		M. Hislop & M. Griffiths WW 105.26
<i>Trifolium glomeratum</i> L.	SHEET NO. 06581579	Alien	M. Hislop & M. Griffiths WW 105.27
<i>Trachymene cyanopetala</i> (F.Muell.)Benth.	SHEET NO. 06581587		M. Hislop & M. Griffiths WW 105.28
<i>Trifolium subterraneum</i> L.	SHEET NO. 06581595	Alien	M. Hislop & M. Griffiths WW 105.29
<i>Zaluzianskya divaricata</i> (Thunb.)Walp.	SHEET NO. 06581609	Alien	M. Hislop & M. Griffiths WW 105.30
<i>Rhodanthe manglesii</i> Lindl.	SHEET NO. 06581617		M. Hislop & M. Griffiths WW 105.31
<i>Hyalosperma glutinosum</i> Steetz subsp. <i>glutinosum</i>	SHEET NO. 06581625		M. Hislop & M. Griffiths WW 105.32
<i>Aira cupaniana</i> Guss.	SHEET NO. 06581633	Alien	M. Hislop & M. Griffiths WW 105.33
<i>Thysanotus manglesianus</i> Kunth	SHEET NO. 06581641		M. Hislop & M. Griffiths WW 105.34
<i>Dichopogon capillipes</i> (Endl.)Brittan	SHEET NO. 06581668		M. Hislop & M. Griffiths WW 105.35
<i>Calandrinia calyptata</i> Hook.f.	SHEET NO. 06581676		M. Hislop & M. Griffiths WW 105.36
<i>Oxalis perennans</i> Haw.	SHEET NO. 06581684		M. Hislop & M. Griffiths WW 105.37
<i>Crassula colorata</i> var. <i>acuminata</i>			
(Reader)Toelken	SHEET NO. 06581692		M. Hislop & M. Griffiths WW 105.38
<i>Phyllangium sulcatum</i> Dunlop	SHEET NO. 06581706		M. Hislop & M. Griffiths WW 105.39
<i>Rhodanthe pygmaea</i> (DC.)Paul G.Wilson	SHEET NO. 06581714		M. Hislop & M. Griffiths WW 105.40
<i>Calotis hispidula</i> (F.Muell.)F.Muell.	SHEET NO. 06581722		M. Hislop & M. Griffiths WW 105.42
<i>Crassula decumbens</i> Thunb. var. <i>decumbens</i>	SHEET NO. 6581730		M. Hislop & M. Griffiths WW 105.43
<i>Isoetopsis graminifolia</i> Turcz.	SHEET NO. 06581749		M. Hislop & M. Griffiths WW 105.44
<i>Ptilotus spathulatus</i> (R.Br.)Steud.	SHEET NO. 06581757		M. Hislop & M. Griffiths WW 105.45
<i>Hydrocotyle pilifera</i> var. <i>glabrata</i> Benth.	SHEET NO. 06581765		M. Hislop & M. Griffiths WW 105.46 A
<i>Chthonocephalus pseudevax</i> Steetz	SHEET NO. 06581773		M. Hislop & M. Griffiths WW 105.46 B
<i>Cephalopterum drummondii</i> A.Gray	SHEET NO. 06581781		M. Hislop & M. Griffiths WW 105.47
<i>Parietaria cardiostegia</i> Greuter	SHEET NO. 06581803		M. Hislop & M. Griffiths WW 105.48
<i>Actinobole uliginosum</i> (A.Gray)H.Eichler	SHEET NO. 06581811		M. Hislop & M. Griffiths WW 105.49
<i>Levenhookia dubia</i> Sond.	SHEET NO. 06581838		M. Hislop & M. Griffiths WW 105.50
<i>Crassula closiana</i> (Gay)Reiche	SHEET NO. 06581846		M. Hislop & M. Griffiths WW 105.51
<i>Hordeum leporinum</i> Link	SHEET NO. 06581854	Alien	M. Hislop & M. Griffiths WW 105.52
<i>Neurachne alopecuroidea</i> R.Br.	SHEET NO. 06581862		M. Hislop & M. Griffiths WW 105.53
<i>Austrostipa tenuifolia</i> (Steud.)S.W.L.Jacobs & J.Everett	SHEET NO. 06581870		M. Hislop & M. Griffiths WW 105.54

<i>Eucalyptus subangusta</i> subsp. <i>pusilla</i> Brooker & Hopper	SHEET NO. 06581889	M. Hislop & M. Griffiths WW 105.55
<i>Hakea recurva</i> Meisn. subsp. <i>recurva</i>	SHEET NO. 06581897	M. Hislop & M. Griffiths WW 105.56
<i>Acacia erinacea</i> Benth.	SHEET NO. 06581900	M. Hislop & M. Griffiths WW 105.57

**Site:** WW-106      **No. of Species:** 37

**Locality:** Toodyay

**Vegetation:** *Eucalyptus loxophleba* woodland.

<i>Eucalyptus loxophleba</i> Benth. subsp. <i>loxophleba</i>	SHEET NO. 06580238	M. Hislop & M. Griffiths WW 106.01
<i>Acacia acuminata</i> Benth.	SHEET NO. 06580246	M. Hislop & M. Griffiths WW 106.02
<i>Austrostipa variabilis</i> (Hughes)S.W.L.Jacobs & J.Everett	SHEET NO. 06580254	M. Hislop & M. Griffiths WW 106.03
<i>Arctotheca calendula</i> (L.)Levyns	SHEET NO. 06580262	Alien M. Hislop & M. Griffiths WW 106.04
<i>Avena barbata</i> Link	SHEET NO. 06580270	Alien M. Hislop & M. Griffiths WW 106.05
<i>Echium plantagineum</i> L.	SHEET NO. 06580289	Alien M. Hislop & M. Griffiths WW 106.06
<i>Erodium botrys</i> (Cav.)Bertol.	SHEET NO. 06580297	Alien M. Hislop & M. Griffiths WW 106.07
<i>Hypochaeris glabra</i> L.	SHEET NO. 06580300	Alien M. Hislop & M. Griffiths WW 106.08
<i>Trifolium subterraneum</i> L.	SHEET NO. 06580319	Alien M. Hislop & M. Griffiths WW 106.09
<i>Vulpia myuros</i> var. <i>megalura</i> (Nutt.)P.Auquier	SHEET NO. 06580327	Alien M. Hislop & M. Griffiths WW 106.10
<i>Ehrharta longiflora</i> Sm.	SHEET NO. 06580335	Alien M. Hislop & M. Griffiths WW 106.11
<i>Bromus rubens</i> L.	SHEET NO. 06580343	Alien M. Hislop & M. Griffiths WW 106.12
<i>Drosera bulbosa</i> Hook.	SHEET NO. 06580351	M. Hislop & M. Griffiths WW 106.14
<i>Galium murale</i> (L.)All.	SHEET NO. 06580378	Alien M. Hislop & M. Griffiths WW 106.15
<i>Parentucellia latifolia</i> (L.)Caruel	SHEET NO. 06580386	Alien M. Hislop & M. Griffiths WW 106.16
<i>Crassula closiana</i> (Gay)Reiche	SHEET NO. 06580394	M. Hislop & M. Griffiths WW 106.17 A
<i>Crassula decumbens</i> Thunb. var. <i>decumbens</i>	SHEET NO. 06580408	M. Hislop & M. Griffiths WW 106.17 B
<i>Drosera glanduligera</i> Lehm.	SHEET NO. 06580416	M. Hislop & M. Griffiths WW 106.18
<i>Borya sphaerocephala</i> R.Br.	SHEET NO. 06580432	M. Hislop & M. Griffiths WW 106.19
<i>Drosera stricticaulis</i> (Diels)O.H.Sarg.	SHEET NO. 06580440	M. Hislop & M. Griffiths WW 106.20
<i>Cheilanthes sieberi</i> Kunze subsp. <i>sieberi</i>	SHEET NO. 06580459	M. Hislop & M. Griffiths WW 106.21
<i>Dichopogon capillipes</i> (Endl.)Brittan	SHEET NO. 06580467	M. Hislop & M. Griffiths WW 106.22
<i>Aira cupaniana</i> Guss.	SHEET NO. 06580475	Alien M. Hislop & M. Griffiths WW 106.23
<i>Hyalosperma glutinosum</i> Steetz subsp. <i>glutinosum</i>	SHEET NO. 06580483	M. Hislop & M. Griffiths WW 106.24
<i>Crassula colorata</i> var. <i>acuminata</i> (Reader)Toelken	SHEET NO. 06580491	M. Hislop & M. Griffiths WW 106.25
<i>Plantago cretica</i> L.	SHEET NO. 06580505	Alien M. Hislop & M. Griffiths WW 106.26
<i>Hyalosperma demissum</i> (A.Gray)Paul G.Wilson	SHEET NO. 06580513	M. Hislop & M. Griffiths WW 106.27
<i>Ptilotus spathulatus</i> (R.Br.)Steud.	SHEET NO. 06580521	M. Hislop & M. Griffiths WW 106.28
<i>Romulea rosea</i> var. <i>australis</i> (Ewart)M.P.de Vos	SHEET NO. 06580548	Alien M. Hislop & M. Griffiths WW 106.29
<i>Neurachne alopecuroidea</i> R.Br.	SHEET NO. 06580556	M. Hislop & M. Griffiths WW 106.30
<i>Rhodanthe pygmaea</i> (DC.)Paul G.Wilson	SHEET NO. 06580564	M. Hislop & M. Griffiths WW 106.31
<i>Schoenus odontocarpus</i> F.Muell.	SHEET NO. 06580572	M. Hislop & M. Griffiths WW 106.32
<i>Isoetopsis graminifolia</i> Turcz.	SHEET NO. 06580580	M. Hislop & M. Griffiths WW 106.33
<i>Cotula coronopifolia</i> L.	SHEET NO. 06580629	M. Hislop & M. Griffiths s.n.
<i>Hakea preissii</i> Meisn.	SHEET NO. 06580610	M. Hislop & M. Griffiths s.n.
<i>Casuarina obesa</i> Miq.	SHEET NO. 06580602	M. Hislop & M. Griffiths s.n.
<i>Melaleuca viminea</i> Lindl.	SHEET NO. 06580599	M. Hislop & M. Griffiths s.n.

**Site:** WW-107      **No. of Species:** 57

**Locality:** Dowerin

**Vegetation:** *Eucalyptus salubris/loxophleba* woodland.



<i>Eucalyptus loxophleba</i> Benth. subsp. <i>loxophleba</i>	SHEET NO. 06722032		M. Hislop & M. Griffiths WW 107-1
<i>Eucalyptus salubris</i> F.Muell.	SHEET NO. 06722040		M. Hislop & M. Griffiths WW 107-2
<i>Enchylaena tomentosa</i> R.Br. var. <i>tomentosa</i>	SHEET NO. 06722059		M. Hislop & M. Griffiths WW 107-3
<i>Enchylaena lanata</i> Paul G.Wilson	SHEET NO. 06722067		M. Hislop & M. Griffiths WW 107-4
<i>Senecio glossanthus</i> (Sond.)Belcher	SHEET NO. 06722075		M. Hislop & M. Griffiths WW 107-5
<i>Austroanthonia caespitosa</i> (Gaudich.)H.P.Linder	SHEET NO. 06722083		M. Hislop & M. Griffiths WW 107-6
<i>Ptilotus gaudichaudii</i> (Steud.)J.M.Black	SHEET NO. 06722091		M. Hislop & M. Griffiths WW 107-7
<i>Maireana marginata</i> (Benth.)Paul G.Wilson	SHEET NO. 06722105		M. Hislop & M. Griffiths WW 107-8
<i>Echium plantagineum</i> L.	SHEET NO. 06722008	Alien	M. Hislop & M. Griffiths WW 107-9
<i>Austrostipa trichophylla</i> (Benth.)S.W.L.Jacobs & J.Everett	SHEET NO. 06722016		M. Hislop & M. Griffiths WW 107-10
<i>Sclerolaena diacantha</i> (Nees)Benth.	SHEET NO. 06722024		M. Hislop & M. Griffiths WW 107-11
<i>Alyxia buxifolia</i> R.Br.	SHEET NO. 06722113		M. Hislop & M. Griffiths WW 107-12
<i>Exocarpos aphyllus</i> R.Br.	SHEET NO. 06722121		M. Hislop & M. Griffiths WW 107-13
<i>Rhagodia drummondii</i> Moq.	SHEET NO. 06722148		M. Hislop & M. Griffiths WW 107-14
<i>Acacia hemiteles</i> Benth.	SHEET NO. 06722156		M. Hislop & M. Griffiths WW 107-15
<i>Avena fatua</i> L.	SHEET NO. 06722164	Alien	M. Hislop & M. Griffiths WW 107-16
<i>Eremophila drummondii</i> F.Muell.	SHEET NO. 06722180		M. Hislop & M. Griffiths WW 107-17
<i>Eremophila drummondii</i> F.Muell.	SHEET NO. 06722172		M. Hislop & M. Griffiths WW 107-17
<i>Erodium cygnorum</i> Nees subsp. <i>cygnorum</i>	SHEET NO. 06722199		M. Hislop & M. Griffiths WW 107-19
<i>Ehrharta longiflora</i> Sm.	SHEET NO. 06722202	Alien	M. Hislop & M. Griffiths WW 107-20
<i>Calandrinia eremaea</i> Ewart	SHEET NO. 06722210		M. Hislop & M. Griffiths WW 107-21
<i>Ptilotus holosericeus</i> (Moq.)F.Muell.	SHEET NO. 06722229		M. Hislop & M. Griffiths WW 107-22
<i>Arthropodium dyeri</i> (Domin)Brittan	SHEET NO. 06722237		M. Hislop & M. Griffiths WW 107-23
<i>Rhodanthe pygmaea</i> (DC.)Paul G.Wilson	SHEET NO. 06722245		M. Hislop & M. Griffiths WW 107-24
<i>Moraea setifolia</i> (L.f.)Druce	SHEET NO. 06722253	Alien	M. Hislop & M. Griffiths WW 107-25
<i>Bulbine semibarbata</i> (R.Br.)Haw.	SHEET NO. 06722261		M. Hislop & M. Griffiths WW 107-26
<i>Lawrencella rosea</i> Lindl.	SHEET NO. 06722288		M. Hislop & M. Griffiths WW 107-27
<i>Rhodanthe laevis</i> (A.Gray)Paul G.Wilson	SHEET NO. 06722296		M. Hislop & M. Griffiths WW 107-28
<i>Ptilotus spathulatus</i> (R.Br.)Steud.	SHEET NO. 06722318		M. Hislop & M. Griffiths WW 107-29
<i>Calandrinia calyprata</i> Hook.f.	SHEET NO. 06722326		M. Hislop & M. Griffiths WW 107-30
<i>Calotis hispidula</i> (F.Muell.)F.Muell.	SHEET NO. 06722334		M. Hislop & M. Griffiths WW 107-31
<i>Goodenia berardiana</i> (Gaudich.)Carolin	SHEET NO. 06722342		M. Hislop & M. Griffiths WW 107-32
<i>Crassula colorata</i> var. <i>acuminata</i> (Reader)Toelken	SHEET NO. 06722350		M. Hislop & M. Griffiths WW 107-33
<i>Podolepis tepperi</i> (F.Muell.)D.A.Cooke	SHEET NO. 06722369		M. Hislop & M. Griffiths WW 107-34
<i>Erymophyllum tenellum</i> (Turcz.)Paul G.Wilson	SHEET NO. 06722377		M. Hislop & M. Griffiths WW 107-35
<i>Trachymene cyanopetala</i> (F.Muell.)Benth.	SHEET NO. 06722385		M. Hislop & M. Griffiths WW 107-36
<i>Trachymene ornata</i> (Endl.)Druce	SHEET NO. 06722393		M. Hislop & M. Griffiths WW 107-37
<i>Hyalosperma glutinosum</i> Steetz subsp. <i>glutinosum</i>	SHEET NO. 06722407		M. Hislop & M. Griffiths WW 107-38
<i>Brassica tournefortii</i> Gouan	SHEET NO. 06722415	Alien	M. Hislop & M. Griffiths WW 107-39
<i>Hordeum glaucum</i> Steud.	SHEET NO. 06722423	Alien	M. Hislop & M. Griffiths WW 107-40
<i>Vulpia myuros</i> (L.)Gmel. var. <i>myuros</i>	SHEET NO. 06722431	Alien	M. Hislop & M. Griffiths WW 107-41
<i>Austrostipa elegantissima</i> (Labill.)S.W.L.Jacobs & J.Everett	SHEET NO. 06722458		M. Hislop & M. Griffiths WW 107-42
<i>Elymus scaber</i> (R.Br.)A.Love	SHEET NO. 06722466		M. Hislop & M. Griffiths WW 107-43
<i>Wahlenbergia gracilentia</i> Lothian	SHEET NO. 06722474		M. Hislop & M. Griffiths WW 107-44
<i>Waitzia acuminata</i> Steetz var. <i>acuminata</i>	SHEET NO. 06722482		M. Hislop & M. Griffiths WW 107-45
<i>Santalum acuminatum</i> (R.Br.)A.DC.	SHEET NO. 06722490		M. Hislop & M. Griffiths WW 107-46
<i>Comesperma integerrimum</i> Endl.	SHEET NO. 06722504		M. Hislop & M. Griffiths WW 107-47
<i>Rhodanthe manglesii</i> Lindl.	SHEET NO. 06722512		M. Hislop & M. Griffiths WW 107-48
<i>Pelargonium havlasae</i> Domin	SHEET NO. 06722520		M. Hislop & M. Griffiths WW 107-49
<i>Phyllangium sulcatum</i> Dunlop	SHEET NO. 06722539		M. Hislop & M. Griffiths WW 107-50
<i>Cleretum papulosum</i> (L.f.)L.Bolus	SHEET NO. 06722547	Alien	M. Hislop & M. Griffiths WW 107-51

Olearia muelleri (Sond.)Benth.	SHEET NO. 06722555	M. Hislop & M. Griffiths WW 107-52
Melaleuca acuminata F.Muell. subsp. acuminata	SHEET NO. 06722563	M. Hislop & M. Griffiths WW 107-53
Neurachne alopecuroidea R.Br.	SHEET NO. 06722571	M. Hislop & M. Griffiths WW 107-54
Austrostipa scabra (Lindl.)S.W.L.Jacobs & J.Everett	SHEET NO. 06722598	M. Hislop & M. Griffiths WW 107-55
Rhodanthe stricta (Lindl.)Paul G.Wilson	SHEET NO. 06722601	M. Hislop & M. Griffiths WW 107-56
Austrostipa variabilis (Hughes)S.W.L.Jacobs & J.Everett	SHEET NO. 06722628	M. Hislop & M. Griffiths WW 107-57

**Site:** WW-108      **No. of Species:** 40

**Locality:** Cunderdin

**Vegetation:** *Eucalyptus salubris/capillosa* woodland.

Eucalyptus salubris F.Muell.	SHEET NO. 06578586	M. Hislop & M. Griffiths WW 108.1
Eucalyptus salmonophloia F.Muell.	SHEET NO. 06578659	M. Hislop & M. Griffiths WW 108.2
Eucalyptus capillosa subsp. polyclada Brooker & Hopper	SHEET NO. 06578594	M. Hislop & M. Griffiths WW 108.3
Eucalyptus sheathiana Maiden	SHEET NO. 06578608	M. Hislop & M. Griffiths WW 108.4
Melaleuca acuminata F.Muell. subsp. acuminata	SHEET NO. 06578616	M. Hislop & M. Griffiths WW 108.5
Acacia erinacea Benth.	SHEET NO. 06578624	M. Hislop & M. Griffiths WW 108.6
Lepidosperma aff. costale	SHEET NO. 06578632	M. Hislop & M. Griffiths WW 108.7
Hypochaeris glabra L.	SHEET NO. 06578640	Alien M. Hislop & M. Griffiths WW 108.8
Hordeum glaucum Steud.	SHEET NO. 06578667	Alien M. Hislop & M. Griffiths WW 108.9
Austrostipa elegantissima (Labill.)S.W.L.Jacobs & J.Everett	SHEET NO. 06578675	M. Hislop & M. Griffiths WW 108.10
Arthropodium dyeri (Domin)Brittan	SHEET NO. 06578683	M. Hislop & M. Griffiths WW 108.11
Wilsonia humilis R.Br.	SHEET NO. 06578691	M. Hislop & M. Griffiths WW 108.12
Goodenia berardiana (Gaudich.)Carolin	SHEET NO. 06578705	M. Hislop & M. Griffiths WW 108.13
Calotis hispidula (F.Muell.)F.Muell.	SHEET NO. 06578713	M. Hislop & M. Griffiths WW 108.14
Trachymene cyanopetala (F.Muell.)Benth.	SHEET NO. 06578721	M. Hislop & M. Griffiths WW 108.15
Trachymene ornata (Endl.)Druce	SHEET NO. 06578748	M. Hislop & M. Griffiths WW 108.16
Pogonolepis muelleriana (Sond.)P.S.Short	SHEET NO. 06578772	M. Hislop & M. Griffiths WW 108.17
Erymophyllum tenellum (Turcz.)Paul G.Wilson	SHEET NO. 06578756	M. Hislop & M. Griffiths WW 108.17
Rhodanthe laevis (A.Gray)Paul G.Wilson	SHEET NO. 06578764	M. Hislop & M. Griffiths WW 108.18
Podolepis tepperi (F.Muell.)D.A.Cooke	SHEET NO. 06578780	M. Hislop & M. Griffiths WW 108.20
Cotula bipinnata Thunb.	SHEET NO. 06578799	Alien M. Hislop & M. Griffiths WW 108.21
Calandrinia granulifera Benth.	SHEET NO. 06578802	M. Hislop & M. Griffiths WW 108.22
Gunniopsis rubra Chinnock	SHEET NO. 06578810	M. Hislop & M. Griffiths WW 108.23
Calandrinia calyptrata Hook.f.	SHEET NO. 06578829	M. Hislop & M. Griffiths WW 108.24
Crassula colorata (Nees)Ostenf.	SHEET NO. 06578837	M. Hislop & M. Griffiths WW 108.25
Crassula decumbens Thunb. var. decumbens	SHEET NO. 06578845	M. Hislop & M. Griffiths WW 108.26
Acacia merrallii F.Muell.	SHEET NO. 06578853	M. Hislop & M. Griffiths WW 108.27
Maireana marginata (Benth.)Paul G.Wilson	SHEET NO. 6578861	M. Hislop & M. Griffiths WW 108.28
Melaleuca adnata Turcz.	SHEET NO. 06578888	M. Hislop & M. Griffiths WW 108.29
Eucalyptus celastroides subsp. virella Brooker	SHEET NO. 06578896	M. Hislop & M. Griffiths WW 108.30
Exocarpos aphyllus R.Br.	SHEET NO. 06578918	M. Hislop & M. Griffiths WW 108.31
Grevillea huegelii Meisn.	SHEET NO. 06578926	M. Hislop & M. Griffiths WW 108.32
Melaleuca coroncarpa D.A.Herb.	SHEET NO. 06578934	M. Hislop & M. Griffiths WW 108.33
Eucalyptus erythronema var. marginata (Benth.)Domin	SHEET NO. 06578942	M. Hislop & M. Griffiths WW 108.34
Senecio glossanthus (Sond.)Belcher	SHEET NO. 06578950	M. Hislop & M. Griffiths WW 108.35
Trymalium daphnifolium Reissek	SHEET NO. 06578969	M. Hislop & M. Griffiths WW 108.36
Vulpia myuros (L.)Gmel. var. myuros	SHEET NO. 06578977	Alien M. Hislop & M. Griffiths WW 108.37
Wahlenbergia gracilentia Lothian	SHEET NO. 06578985	M. Hislop & M. Griffiths WW 108.38

Lepidium rotundum (Desv.)DC.	SHEET NO. 06578993	M. Hislop & M. Griffiths WW 108.39
Parietaria cardiostegia Greuter	SHEET NO. 06579000	M. Hislop & M. Griffiths WW 108.40

**Site:** WW-109      **No. of Species:** 59

**Locality:** Cunderdin

**Vegetation:** *Eucalyptus loxophleba* woodland.

<i>Eucalyptus loxophleba</i> Benth. subsp. <i>loxophleba</i>	SHEET NO. 06721125	M. Hislop & M. Griffiths WW 109.1
<i>Allocasuarina huegeliana</i> (Miq.)L.A.S.Johnson	SHEET NO. 06721133	M. Hislop & M. Griffiths WW 109.2
<i>Acacia acuminata</i> Benth.	SHEET NO. 06721141	M. Hislop & M. Griffiths WW 109.3
<i>Dampiera lavandulacea</i> Lindl.	SHEET NO. 06721168	M. Hislop & M. Griffiths WW 109.4
<i>Lepidosperma costale</i> Nees	SHEET NO. 06721176	M. Hislop & M. Griffiths WW 109.5
<i>Borya sphaerocephala</i> R.Br.	SHEET NO. 06721184	M. Hislop & M. Griffiths WW 109.6
<i>Arctotheca calendula</i> (L.)Levyns	SHEET NO. 06721192	Alien M. Hislop & M. Griffiths WW 109.7
<i>Waitzia nitida</i> (Lindl.)Paul G.Wilson	SHEET NO. 06721206	M. Hislop & M. Griffiths WW 109.8
<i>Austrostipa elegantissima</i> (Labill.)S.W.L.Jacobs & J.Everett	SHEET NO. 06721214	M. Hislop & M. Griffiths WW 109.9
<i>Lolium rigidum</i> Gaudin	SHEET NO. 06721222	Alien M. Hislop & M. Griffiths WW 109-10
<i>Bromus rubens</i> L.	SHEET NO. 06721230	Alien M. Hislop & M. Griffiths WW 109-11
<i>Podolepis lessonii</i> (Cass.)Benth.	SHEET NO. 06721249	M. Hislop & M. Griffiths WW 109-12
<i>Rhodanthe manglesii</i> Lindl.	SHEET NO. 06721257	M. Hislop & M. Griffiths WW 109-13
<i>Neurachne alopecuroidea</i> R.Br.	SHEET NO. 06721265	M. Hislop & M. Griffiths WW 109-14
<i>Ursinia anthemoides</i> (L.)Poir.	SHEET NO. 06721273	Alien M. Hislop & M. Griffiths WW 109-15
<i>Hypochaeris glabra</i> L.	SHEET NO. 06721281	Alien M. Hislop & M. Griffiths WW 109-16
<i>Austrostipa tenuifolia</i> (Steud.)S.W.L.Jacobs & J.Everett	SHEET NO. 06721303	M. Hislop & M. Griffiths WW 109-17
<i>Briza maxima</i> L.	SHEET NO. 06721311	Alien M. Hislop & M. Griffiths WW 109-18
<i>Nicotiana rotundifolia</i> Lindl.	SHEET NO. 06721338	M. Hislop & M. Griffiths WW 109-19
<i>Brassica tournefortii</i> Gouan	SHEET NO. 06721346	Alien M. Hislop & M. Griffiths WW 109-20
<i>Drosera macrantha</i> Endl. subsp. <i>macrantha</i>	SHEET NO. 06721354	M. Hislop & M. Griffiths WW 109-21
<i>Hydrocotyle pilifera</i> var. <i>glabrata</i> Benth.	SHEET NO. 06721362	M. Hislop & M. Griffiths WW 109-22
<i>Crassula decumbens</i> Thunb. var. <i>decumbens</i>	SHEET NO. 06721370	M. Hislop & M. Griffiths WW 109-23
<i>Crassula extrorsa</i> Toelken	SHEET NO. 06721389	M. Hislop & M. Griffiths WW 109-24
<i>Zaluzianskya divaricata</i> (Thunb.)Walp.	SHEET NO. 06721397	Alien M. Hislop & M. Griffiths WW 109-25
<i>Erodium cygnorum</i> Nees subsp. <i>cygnorum</i>	SHEET NO. 06721400	M. Hislop & M. Griffiths WW 109-26
<i>Pentaschistis airoides</i> (Nees)Stapf	SHEET NO. 06721419	Alien M. Hislop & M. Griffiths WW 109-27
<i>Crassula closiana</i> (Gay)Reiche	SHEET NO. 06721427	M. Hislop & M. Griffiths WW 109-28
<i>Levenhookia dubia</i> Sond.	SHEET NO. 06721435	M. Hislop & M. Griffiths WW 109-29
<i>Trachymene ornata</i> (Endl.)Druce	SHEET NO. 06721443	M. Hislop & M. Griffiths WW 109-30
<i>Trachymene cyanopetala</i> (F.Muell.)Benth.	SHEET NO. 06721451	M. Hislop & M. Griffiths WW 109-31
<i>Velleia cynopotamica</i> F.Muell.	SHEET NO. 06721478	M. Hislop & M. Griffiths WW 109-32
<i>Aira cupaniana</i> Guss.	SHEET NO. 06721486	Alien M. Hislop & M. Griffiths WW 109-33
<i>Cheilanthes sieberi</i> Kunze subsp. <i>sieberi</i>	SHEET NO. 06721494	M. Hislop & M. Griffiths WW 109-35
<i>Galium murale</i> (L.)All.	SHEET NO. 06721508	Alien M. Hislop & M. Griffiths WW 109-36
<i>Crassula colorata</i> (Nees)Ostenf. var. <i>colorata</i>	SHEET NO. 06721516	M. Hislop & M. Griffiths WW 109-37
<i>Parentucellia latifolia</i> (L.)Caruel	SHEET NO. 06721524	Alien M. Hislop & M. Griffiths WW 109-38
<i>Arthropodium curvipes</i> S.Moore	SHEET NO. 06721532	M. Hislop & M. Griffiths WW 109-39
<i>Goodenia berardiana</i> (Gaudich.)Carolin	SHEET NO. 06721540	M. Hislop & M. Griffiths WW 109-40
<i>Thysanotus patersonii</i> R.Br.	SHEET NO. 06721559	M. Hislop & M. Griffiths WW 109-41
<i>Hyalosperma glutinosum</i> Steetz subsp. <i>glutinosum</i>	SHEET NO. 06721567	M. Hislop & M. Griffiths WW 109-42
<i>Anagallis arvensis</i> var. <i>caerulea</i> Gouan	SHEET NO. 06721575	Alien M. Hislop & M. Griffiths WW 109-43
<i>Trifolium subterraneum</i> L.	SHEET NO. 06721583	Alien M. Hislop & M. Griffiths WW 109-44
<i>Phyllangium sulcatum</i> Dunlop	SHEET NO. 06721591	M. Hislop & M. Griffiths WW 109-45
<i>Gonocarpus nodulosus</i> Nees	SHEET NO. 06721605	M. Hislop & M. Griffiths WW 109-46
<i>Poranthera microphylla</i> Brongn.	SHEET NO. 06721613	M. Hislop & M. Griffiths WW 109-47

Calandrinia calyptрата Hook.f.	SHEET NO. 06721621	M. Hislop & M. Griffiths WW 109-48
Cyanicula gemmata (Lindl.)Hopper & A.P.Br.	SHEET NO. 06721648	M. Hislop & M. Griffiths WW 109-49
Chthonocephalus pseudevax Steetz	SHEET NO. 06721656	M. Hislop & M. Griffiths WW 109-50
Calandrinia eremaea Ewart	SHEET NO. 06721664	M. Hislop & M. Griffiths WW 109-51
Rhodanthe pygmaea (DC.)Paul G.Wilson	SHEET NO. 06721672	M. Hislop & M. Griffiths WW 109-52
Rhodanthe polycephala (A.Gray)Paul G.Wilson	SHEET NO. 06721680	M. Hislop & M. Griffiths WW 109-53
Ptilotus spathulatus (R.Br.)Steud.	SHEET NO. 06721699	M. Hislop & M. Griffiths WW 109-54
Lomandra effusa (Lindl.)Ewart	SHEET NO. 06721702	M. Hislop & M. Griffiths WW 109-55
Caesia micrantha Lindl.	SHEET NO. 06721710	M. Hislop & M. Griffiths WW 109-56
Opercularia vaginata Labill.	SHEET NO. 06721729	M. Hislop & M. Griffiths WW 109-57
Aristida contorta F.Muell.	SHEET NO. 06721737	M. Hislop & M. Griffiths WW 109-58
Orthrosanthus laxus var. gramineus (Endl.)Geerinck	SHEET NO. 06581919	M. Hislop & M. Griffiths WW 109.59
Ptilotus humilis (Nees)F.Muell. subsp. humilis	SHEET NO. 06581927	M. Hislop & M. Griffiths WW 109.60

**Site:** WW-110      **No. of Species:** 33

**Locality:** Quaiading

**Vegetation:** *Eucalyptus wandoo/astringens* woodland

Eucalyptus astringens (Maiden)Maiden subsp. astringens	SHEET NO. 06583164	M. Hislop & M. Griffiths WW 110.01
Eucalyptus arachnaea Brooker & Hopper subsp. arachnaea	SHEET NO. 06583172	M. Hislop & M. Griffiths WW 110.02
eucalyptus wandoo Blakely subsp. wandoo	SHEET NO. 06583180	M. Hislop & M. Griffiths WW 110.03
Goodenia pinifolia de Vriese	SHEET NO. 06583199	M. Hislop & M. Griffiths WW 110.04
Gastrolobium parviflorum (Benth.)Crisp	SHEET NO. 06583202	M. Hislop & M. Griffiths WW 110.05
Melaleuca scalena Craven & Lepschi	SHEET NO. 06583210	M. Hislop & M. Griffiths WW 110.06
Gastrolobium trilobum Benth.	SHEET NO. 06583229	M. Hislop & M. Griffiths WW 110.07
Dodonaea bursariifolia F.Muell.	SHEET NO. 06583237	M. Hislop & M. Griffiths WW 110.08
Melaleuca coronicarpa D.A.Herb.	SHEET NO. 06583245	M. Hislop & M. Griffiths WW 110.09
Crassula closiana (Gay)Reiche	SHEET NO. 06583253	M. Hislop & M. Griffiths WW 110.10
Vulpia muralis (Kunth)Nees	SHEET NO. 06583261	Alien M. Hislop & M. Griffiths WW 110.11
Lachnagrostis sp.	SHEET NO. 06583288	M. Hislop & M. Griffiths WW 110.12
Wahlenbergia gracilentia Lothian	SHEET NO. 06583296	M. Hislop & M. Griffiths WW 110.13
Phyllangium sulcatum Dunlop	SHEET NO. 06583318	M. Hislop & M. Griffiths WW 110.14
Hydrocotyle rugulosa Turcz.	SHEET NO. 06583326	M. Hislop & M. Griffiths WW 110.15
Trachymene cyanopetala (F.Muell.)Benth.	SHEET NO. 06583334	M. Hislop & M. Griffiths WW 110.16
Thysanotus patersonii R.Br.	SHEET NO. 06583342	M. Hislop & M. Griffiths WW 110.17
Rhodanthe laevis (A.Gray)Paul G.Wilson	SHEET NO. 06583350	M. Hislop & M. Griffiths WW 110.18
Blennospora drummondii A.Gray	SHEET NO. 06583369	M. Hislop & M. Griffiths WW 110.19
Crassula colorata (Nees)Ostenf. var. colorata	SHEET NO. 06583377	M. Hislop & M. Griffiths WW 110.20
Trachymene ornata (Endl.)Druce	SHEET NO. 06583385	M. Hislop & M. Griffiths WW 110.21
Poranthera microphylla Brongn.	SHEET NO. 06583393	M. Hislop & M. Griffiths WW 110.22
Schoenus nanus (Nees)Benth.	SHEET NO. 06583407	M. Hislop & M. Griffiths WW 110.23
Podolepis lessonii (Cass.)Benth.	SHEET NO. 06583415	M. Hislop & M. Griffiths WW 110.24
Neurachne alopecuroidea R.Br.	SHEET NO. 06583423	M. Hislop & M. Griffiths WW 110.25
Velleia cynopotamica F.Muell.	SHEET NO. 06583431	M. Hislop & M. Griffiths WW 110.26
Eucalyptus thamnoides Brooker & Hopper	SHEET NO. 06583458	M. Hislop & M. Griffiths WW 110.27
Comesperma volubile Labill.	SHEET NO. 06583466	M. Hislop & M. Griffiths WW 110.28
Hibbertia hemignosta (Steud.)J.R.Wheeler	SHEET NO. 06583474	M. Hislop & M. Griffiths WW 110.29
Hypocalymma angustifolium (Endl.)Schauer	SHEET NO. 06583482	M. Hislop & M. Griffiths WW 110.30
Microcorys obovata Benth.	SHEET NO. 06583490	M. Hislop & M. Griffiths WW 110.31
Melaleuca haplantha Barlow	SHEET NO. 06583504	M. Hislop & M. Griffiths WW 110.32
Santalum acuminatum (R.Br.)A.DC.	SHEET NO. 06583512	M. Hislop & M. Griffiths WW 110.33

**Site:** WW-111      **No. of Species:** 41  
**Locality:** Beverley  
**Vegetation:** *Eucalyptus loxophleba* woodland.

<i>Eucalyptus loxophleba</i> Benth. subsp. loxophleba	SHEET NO. 06581935	M. Hislop & M. Griffiths WW 111.01
<i>Allocaeusuarina huegeliana</i> (Miq.)L.A.S.Johnson	SHEET NO. 06581943	M. Hislop & M. Griffiths WW 111.02
<i>Nicotiana rotundifolia</i> Lindl.	SHEET NO. 06581951	M. Hislop & M. Griffiths WW 111.03
<i>Ptilotus polystachyus</i> (Gaudich.)F.Muell.	SHEET NO. 06581978	M. Hislop & M. Griffiths WW 111.04
<i>Cheilanthes sieberi</i> Kunze subsp. sieberi	SHEET NO. 06581986	M. Hislop & M. Griffiths WW 111.05
<i>Cheilanthes distans</i> (R.Br.)Mett.	SHEET NO. 06581994	M. Hislop & M. Griffiths WW 111.06
<i>Ursinia anthemoides</i> (L.)Poir.	SHEET NO. 06582001	Alien M. Hislop & M. Griffiths WW 111.07
<i>Avena barbata</i> Link	SHEET NO. 06582028	Alien M. Hislop & M. Griffiths WW 111.08
<i>Ehrharta longiflora</i> Sm.	SHEET NO. 06582036	Alien M. Hislop & M. Griffiths WW 111.09
<i>Bromus diandrus</i> Roth	SHEET NO. 06582044	Alien M. Hislop & M. Griffiths WW 111.10
<i>Hypochaeris glabra</i> L.	SHEET NO. 06582052	Alien M. Hislop & M. Griffiths WW 111.11
<i>Trifolium subterraneum</i> L.	SHEET NO. 06582060	Alien M. Hislop & M. Griffiths WW 111.12
<i>Pentaschistis airoides</i> (Nees)Stapf	SHEET NO. 06582079	Alien M. Hislop & M. Griffiths WW 111.13
<i>Crassula decumbens</i> Thunb. var. decumbens	SHEET NO. 06582087	M. Hislop & M. Griffiths WW 111.14
<i>Crassula colorata</i> var. acuminata (Reader)Toelken	SHEET NO. 06582095	M. Hislop & M. Griffiths WW 111.15
<i>Arctotheca calendula</i> (L.)Levyns	SHEET NO. 06582109	Alien M. Hislop & M. Griffiths WW 111.16
<i>Trifolium arvense</i> L. var. arvense	SHEET NO. 06582117	Alien M. Hislop & M. Griffiths WW 111.17
<i>Crassula extrorsa</i> Toelken	SHEET NO. 06582125	M. Hislop & M. Griffiths WW 111.18
<i>Pleurosorus rutifolius</i> (R.Br.)Fee	SHEET NO. 06582249	M. Hislop & M. Griffiths WW 111.29
<i>Acacia lasiocalyx</i> C.R.P.Andrews	SHEET NO. 06582133	M. Hislop & M. Griffiths WW 111.19
<i>Calandrinia eremaea</i> Ewart	SHEET NO. 06582141	M. Hislop & M. Griffiths WW 111.20
<i>Actinobole uliginosum</i> (A.Gray)H.Eichler	SHEET NO. 06582168	M. Hislop & M. Griffiths WW 111.21
<i>Acacia acuminata</i> Benth.	SHEET NO. 06582176	M. Hislop & M. Griffiths WW 111.22
<i>Kennedia prostrata</i> R.Br.	SHEET NO. 06582184	M. Hislop & M. Griffiths WW 111.23
<i>Moraea setifolia</i> (L.f.)Druce	SHEET NO. 06582192	Alien M. Hislop & M. Griffiths WW 111.24
<i>Caesia micrantha</i> Lindl.	SHEET NO. 06582206	M. Hislop & M. Griffiths WW 111.25
<i>Parietaria debilis</i> G.Forst.	SHEET NO. 06582214	M. Hislop & M. Griffiths WW 111.26
<i>Oxalis perennans</i> Haw.	SHEET NO. 06582222	M. Hislop & M. Griffiths WW 111.27
<i>Stypantra glauca</i> R.Br.	SHEET NO. 06582230	M. Hislop & M. Griffiths WW 111.28
<i>Neurachne alopecuroidea</i> R.Br.	SHEET NO. 06582257	M. Hislop & M. Griffiths WW 111.30
<i>Trifolium hirtum</i> All.	SHEET NO. 06582265	Alien M. Hislop & M. Griffiths WW 111.31
<i>Rhodanthe manglesii</i> Lindl.	SHEET NO. 06582273	M. Hislop & M. Griffiths WW 111.32
<i>Austrostipa nodosa</i> (S.T.Blake)S.W.L.Jacobs & J.Everett	SHEET NO. 06582281	M. Hislop & M. Griffiths WW 111.33
<i>Bromus rubens</i> L.	SHEET NO. 06582303	Alien M. Hislop & M. Griffiths WW 111.34
<i>Petrorhagia dubia</i> (Raf.)G.Lopez & Romo	SHEET NO. 06582311	Alien M. Hislop & M. Griffiths WW 111.35
<i>Dioscorea hastifolia</i> Endl.	SHEET NO. 06582338	M. Hislop & M. Griffiths WW 111.36
<i>Echium plantagineum</i> L.	SHEET NO. 06582346	Alien M. Hislop & M. Griffiths WW 111.37
<i>Dryandra sessilis</i> (Knight)Domin var. sessilis	SHEET NO. 06582354	M. Hislop & M. Griffiths WW 111.38
<i>Pimelea argentea</i> R.Br.	SHEET NO. 06582362	M. Hislop & M. Griffiths WW 111.39
<i>Eriachne ovata</i> Nees	SHEET NO. 06582370	M. Hislop & M. Griffiths WW 111.40
<i>Dichopogon capillipes</i> (Endl.)Brittan	SHEET NO. 06582389	M. Hislop & M. Griffiths WW 111.41

**Site:** WW-112      **No. of Species:** 25  
**Locality:** Wandering  
**Vegetation:** *Eucalyptus salmonophloia/wandoo* woodland.

<i>Eucalyptus salmonophloia</i> F.Muell.	SHEET NO. 06582397	M. Hislop & M. Griffiths WW 112.01
--	--------------------	------------------------------------

<i>Eucalyptus astringens</i> (Maiden)Maiden subsp. <i>astringens</i>	SHEET NO. 06582400	M. Hislop & M. Griffiths WW 112.02
<i>Eucalyptus phenax</i> Brooker & Slee	SHEET NO. 06582419	M. Hislop & M. Griffiths WW 112.03
<i>Eucalyptus wandoo</i> Blakely subsp. <i>wandoo</i>	SHEET NO. 06582427	M. Hislop & M. Griffiths WW 112.04
<i>Lolium multiflorum</i> x <i>perenne</i>	SHEET NO. 06582435 Alien	M. Hislop & M. Griffiths WW 112.05
<i>Hordeum glaucum</i> Steud.	SHEET NO. 06582443 Alien	M. Hislop & M. Griffiths WW 112.06
<i>Crassula decumbens</i> Thunb. var. <i>decumbens</i>	SHEET NO. 06582451	M. Hislop & M. Griffiths WW 112.07
<i>Crassula colorata</i> (Nees)Ostenf. var. <i>colorata</i>	SHEET NO. 06582478	M. Hislop & M. Griffiths WW 112.08
<i>Poa annua</i> L.	SHEET NO. 06582486 Alien	M. Hislop & M. Griffiths WW 112.09
<i>Cerastium</i> sp.	SHEET NO. 06582494	M. Hislop & M. Griffiths WW 112.10
<i>Rhodanthe laevis</i> (A.Gray)Paul G.Wilson	SHEET NO. 06582532	M. Hislop & M. Griffiths WW 112.11
<i>Calandrinia calyprata</i> Hook.f.	SHEET NO. 06582508	M. Hislop & M. Griffiths WW 112.12 A
<i>Calandrinia calyprata</i> Hook.f.	SHEET NO. 06582516	M. Hislop & M. Griffiths WW 112.12 B
<i>Neurachne alopecuroidea</i> R.Br.	SHEET NO. 06582524	M. Hislop & M. Griffiths WW 112.13
<i>Trachymene pilosa</i> Sm.	SHEET NO. 06582540	M. Hislop & M. Griffiths WW 112.14
<i>Austrodanthonia acerosa</i> (Vickery)H.P.Linder	SHEET NO. 06582559	M. Hislop & M. Griffiths WW 112.15
<i>Blennospora drummondii</i> A.Gray	SHEET NO. 06582567	M. Hislop & M. Griffiths WW 112.16
<i>Millotia tenuifolia</i> Cass. var. <i>tenuifolia</i>	SHEET NO. 06582575	M. Hislop & M. Griffiths WW 112.17
<i>Hyalosperma demissum</i> (A.Gray)Paul G.Wilson	SHEET NO. 06582583	M. Hislop & M. Griffiths WW 112.18
<i>Bromus rubens</i> L.	SHEET NO. 06582591 Alien	M. Hislop & M. Griffiths WW 112.19
<i>Ehrharta longiflora</i> Sm.	SHEET NO. 06582605 Alien	M. Hislop & M. Griffiths WW 112.20
<i>Arctotheca calendula</i> (L.)Levyns	SHEET NO. 06582613 Alien	M. Hislop & M. Griffiths WW 112.21
<i>Thysanotus patersonii</i> R.Br.	SHEET NO. 06582621	M. Hislop & M. Griffiths WW 112.22
<i>Drosera pilos</i> N.G.Marchant & Lowrie	SHEET NO. 06582648	M. Hislop & M. Griffiths WW 112.23
<i>Homalosciadium homalocarpum</i> (F.Muell.)H.Eichler	SHEET NO. 06582656	M. Hislop & M. Griffiths WW 112.24